

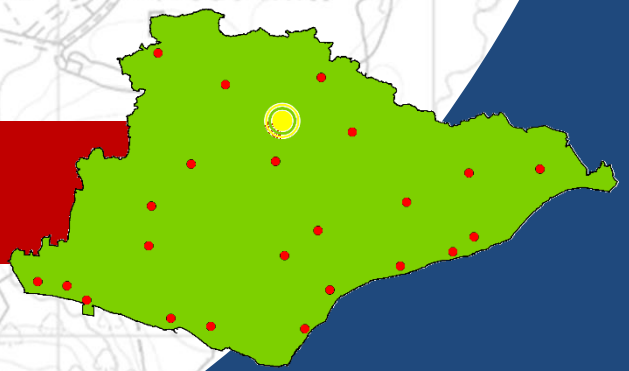


2020

# Mayfield



## Station Risk Profile



# Contents

Mayfield Station Area – Headline Summary.....	3
Overview .....	6
Population Demographics .....	7
Household Demographics .....	10
Census 2011 Household Breakdown.....	10
Mosaic Public Sector Household Breakdown .....	11
Incidents.....	15
Incidents occurring within Mayfield Station Area .....	15
Incidents to which Mayfield appliance(s) were mobilised.....	31
OTB attendances into Mayfield (where ESFRS did not attend).....	35
Standby cover moves.....	36
Special Appliances.....	36
Prevention – Home Fire Safety .....	37
Protection – Business Safety .....	38
Developments .....	40
Residential .....	40
Commercial.....	40
Road Risk .....	41
Water Risk.....	43
Heritage Risk.....	45
Environmental Risk .....	46
Special Risk (Operational Risk) .....	47
Site-Specific Risk Information (SSRI) .....	47
High-Rise Risk.....	48
Special Risk.....	48
Over border risks .....	48

© Crown copyright. Ordnance Survey mapping utilised under Public Sector Mapping Agreement. You are permitted to use this data solely to enable you to respond to, or interact with, the organisation that provided you with the data. You are not permitted to copy, sub-licence, distribute or sell any of this data to third parties in any form. Contains OS data © Crown copyright. Cover photos: [http://www.themiddlehousemayfield.co.uk/\\_assets/middle\\_house-6693-history-surrounding-area.jpg](http://www.themiddlehousemayfield.co.uk/_assets/middle_house-6693-history-surrounding-area.jpg), [https://i.ytimg.com/vi/DfJS6\\_gdJu4/maxresdefault.jpg](https://i.ytimg.com/vi/DfJS6_gdJu4/maxresdefault.jpg), <http://www.mayfieldfestival.co.uk/wp-content/uploads/2018/11/st-dunstans-church.jpg>. Icons by: Freepik / Prosymbols from [www.flaticon.com](http://www.flaticon.com), Crowd Clipart Person Icon - People Round Icon Png from [www.pngkey.com](http://www.pngkey.com)

## Mayfield Station Area – Headline Summary



- Mayfield station area covers approximately **77 sq. km**.
- Area is rural and remote.
- 3 villages in station area; Mayfield, Rotherfield, Five Ashes.
- Operational cover provided by one on-call fire engine.



- **6,664** residents within Mayfield station area.
- A net increase of **398** since 2011 Census.
- Very low population density.
- Generally older population than ESFRS average.
- High proportion of females aged 12-18 due to boarding school.
- Very good general health in area compared to ESFRS average.
- Very low deprivation in area, many output areas in 10% least deprived nationally.



- **98%** of households are within attendance standards.
- **64%** above average fire risk (socio-demographic).
- Lower proportion of lone parents than ESFRS average.
- Lower proportion of rented accommodation than ESFRS average.
- Higher proportion of detached houses than ESFRS average.
- Higher proportion of owned households than ESFRS average.
- High proportions of households with 2 or more spare bedrooms.



### Station area

- Incidents have decreased by **24%** since 2009.
- **51** incidents per year, **2<sup>nd</sup>** least busy station.
- Proportionally **3** times as many RTC incidents than ESFRS.
- Proportionally more chimney fires than ESFRS average.
- **55%** incidents during the day.
- **96%** of incidents inside attendance standards isochrones.
- **6** critical life-risk incidents per year.
- **44%** critical incidents during day.
- Attendance times, on average, slower than other on-call areas.
- **5** minute delay between 1<sup>st</sup> & 2<sup>nd</sup> appliance for fire incidents – **3** minutes quicker than other on-call areas. **7** min delay for RTCs, **3** min slower than on-call coverage.
- **66%** of incidents are attended by a single appliance.
- **23%** of 2<sup>nd</sup> pump attendances were by 81P1, **20%** 83P1, **13%** 82P5.
- **1** level 3 incident within last 9 years of review period.

## Station appliance(s)

### 81P1

- Turn-out time is **06:26**.
- **60%** reduction in mobilisations over 9 years. – **7<sup>th</sup>** greatest reduction out of the 33 appliances.
- Mobilises **66** times per year – **32%** in own area, **28%** in Heathfield, **16%** in Crowborough area, **3%** OTB.
- Attends **7%** more fires, **4%** more RTCs and **10%** fewer false alarms than ESFRS average.
- Mobilises to **8** critical incidents per year – **30%** in own area, **30%** in Heathfield, **11%** in Hastings area, **22%** Crowborough.
- Attendance standard met **55%** of the time (**88%** critical).
- **45%** availability in 2017/18.

### Standby moves

- **22** cover moves per year – **51%** in Uckfield, **37%** in Crowborough, **1%** OTB.



- **216** Home Safety Visits to unique properties undertaken
- **25%** of households have had HSV.



- **5%** of commercial properties are outside attendance standards.
- **2** Business Safety Audits per year, **43%** of which are to 'other sleeping accommodation'.
- **2** Care Homes in area.



- Very low residential growth (**50** dwellings).
- All development within attendance standard isochrones.



- **23** KSI collisions per year. Proportion of serious/fatal collisions **4%** higher than ESFRS.
- **2** slight injures outside attendance standards isochrones.



- **169km** of rivers (**4.3%** of ESFRS rivers). Ranks **13<sup>th</sup>** out of **24** areas.
- Higher proportion of tertiary rivers, fewer primary & secondary.



- **264** listed buildings. **92%** in attendance standard isochrones.
- All grade I & II\* buildings within attendance standard isochrones, **20** grade II fall outside – located in west and north of area.



- **2** flooding incidents per year (**4.7%** of all incidents). Slightly higher rate than ESFRS average.
- **2** SSSI sites – Both on edge of attendance standard isochrones.
- Woodland throughout the station area.



- **4** Level 2 SSRIs, **0** Level 1 or 3 SSRIs.
- No COMAH sites.
- No high-rise properties within area.



## Overview

Mayfield Station Area covers an area of approximately 77 square kilometres, it is a very rural area with a few small settlements. The population is concentrated in 3 main villages in the area, Mayfield, Rotherfield and Five Ashes. The Fire Station is located in the north of Mayfield village itself.

Mayfield is the largest village in the station area, it is located on the A267, approximately 11km south of Tunbridge Wells, and 6km south east of Crowborough. It is a large village with a busy high street with many commercial properties, two pubs and a church.

In the south of the station area is Five Ashes, a small village with few residents and one pub and shop.

The second largest village is Rotherfield, which is located on the border with Crowborough station area, it is located 4.5km south east of Crowborough fire station and 4km north west of Mayfield village.

There is a significant amount of broadleaved and coniferous woodland within the station area.

### Station Resources

Mayfield Community Fire Station is an on-call fire station with one pumping appliance

#### 1 x Extended Rescue Pump (FJE81P1)

Volvo Extended Rescue Pump carrying a variety of ladders including a 12 metre ladder, 1800 litres water and a pump capable of supplying 2250 litres/min. It is a multi-purpose appliance carrying a large amount of equipment including dedicated hydraulic rescue tools, water safety and rescue equipment, oxygen, etc.

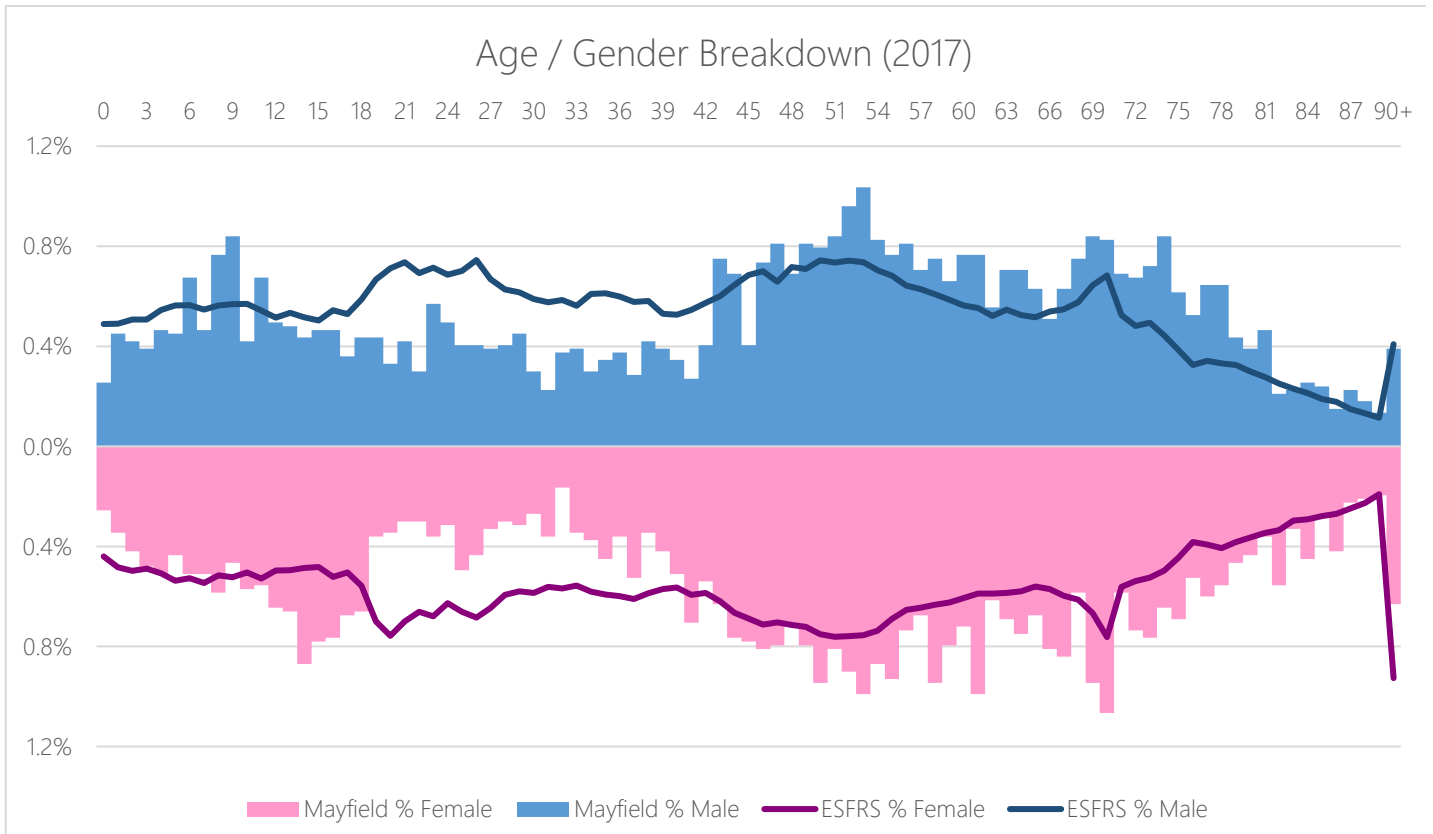


## Population Demographics

The population in Mayfield station area is generally older than the ESFRS average, with higher proportions of persons aged 50-89 years.

Proportionally, there are 4.5% more 50-64yrs, and 5% more 65-79yrs in Mayfield compared to the rest of ESFRS. Additionally there are 1% more 80-89yrs.

There are proportionally 7% fewer 25-49yrs, and 4% fewer 18-24yrs in Mayfield compared to the rest of the service. One anomaly is the very high proportions of females aged 12-18 – this is due to the presence of Mayfield School – an independent boarding school for girls.



2017 population estimates - % Within Area									
	0 to 9	10 to 17	18 to 24	25 to 49	50 to 64	65 to 79	80 to 89	Over 90	Total
Mayfield	646 (9.7%)	621 (9.3%)	375 (5.6%)	1,594 (23.9%)	1,600 (24%)	1,364 (20.5%)	396 (5.9%)	68 (1%)	6,664
ESFRS	87,510 (10.4%)	69,516 (8.3%)	79,643 (9.5%)	261,272 (31.1%)	163,673 (19.5%)	126,538 (15.1%)	41,043 (4.9%)	11,219 (1.3%)	840,414

In addition to population estimates by age-group, ESFRS hold specific records of GP-registered 65+ years. This data is provided annually to all Fire & Rescue Services in England by the NHS through a national Information Sharing Agreement, and enables FRs to prioritise resources to target those most at risk. This data is often referred to as the 'Exeter Data'.

The following table summarises the numbers of 65+yrs (and 80+yrs) in the Mayfield station area and the proportion that fall inside the attendance standard isochrones. For the sake of privacy, these have not been included as a map.

It can be seen that around 98% of 65+ year olds are within the attendance standard isochrones, day or night. This ranks Mayfield 11<sup>th</sup> highest out of the 24 stations (or 4<sup>th</sup> out of the 12 on-call station areas), due to the dispersion of the population throughout the area.

#### Exeter Data: GP-registered 65+ year olds in Mayfield Station Area

	Station Admin Area	No. of persons	% in Att. Std. Isochrone (Day)	% in Att. Std. Isochrone (Night)
65+ Yrs	Mayfield	1,815	98.1	98.4
	ESFRS	179,534	96.5	97.2
80+Yrs	Mayfield	514	98.6	98.8
	ESFRS	51,372	96.8	97.4

Mayfield has a much lower population density compared with the rest of the service, with 0.9 persons per hectare compared to an ESFRS average of 4.7. Mayfield is ranked (*out of 24*) as the 21<sup>st</sup> most densely populated station area in the service area. Only Burwash, Broad Oak and Herstmonceux have lower population densities. The area's population is estimated to have increased by approximately 398 from 2011-2017, based on the 2011 census and 2017 estimates, which resulted in the population density increasing by 0.1 persons per hectare.

Population Density (number of persons per hectare)								
Area Size (Hectares)	All usual residents (2011)	Population Estimate (2017)	Density 2011	Density 2017	Change 2011-17	Rank in ESFRS 2017	ESFRS Average 2011	ESFRS Average 2017
7,717	6,266	6,664	0.8	0.9	0.1	21	4.5	4.7

The general health in Mayfield is very good compared to the rest of ESFRS. 52% of the population in Mayfield are identified as having 'very good health', compared to 45% for ESFRS. Furthermore, there are also fewer proportions of persons with 'bad health' (2.7% in Mayfield, 4.3% ESFRS) and fewer with 'very bad health' (0.5% in Mayfield, 1.3% ESFRS).

General Health - Persons (2011) - % Within Area						
	Very good health	Good health	Fair health	Bad health	Very bad health	Total
Mayfield	3,282 (52.4%)	2,101 (33.5%)	682 (10.9%)	168 (2.7%)	33 (0.5%)	6,266
ESFRS	365,370 (45.7%)	279,665 (35%)	110,093 (13.8%)	34,749 (4.3%)	10,163 (1.3%)	800,040



The table below further depicts the good health in the area, 5% more persons day-to-day activities are 'not limited' in Mayfield compared to the service average. The converse of is that there are 1.4% fewer persons who are 'limited a little', and 3.5% fewer who are 'limited are lot'

	Day-to-day activities limited - Persons (2011) - % Within Area			
	Limited a lot	Limited a little	Not limited	Total
Mayfield	321 (5.1%)	561 (9%)	5,384 (85.9%)	6,266
ESFRS	68,688 (8.6%)	83,026 (10.4%)	648,326 (81%)	800,040

Proportionally there are 3.5% more retired persons in Mayfield compared to ESFRS average. There are similar levels of part and full time employees in Mayfield compared to the rest of the service, however there are proportionally more self-employed persons. There are also proportionally 2% fewer unemployed, and 2.5% fewer long-term sick/disabled. Furthermore, there are proportionally fewer students in Mayfield (6.4%) than the service average (10%).

Economic Activity - All usual residents aged 16 to 74 (2011)			Mayfield	ESFRS
Economically active	Part-time	Employee	629 (14%)	82,644 (14.1%)
		Self-employed without employees	288 (6.4%)	22,199 (3.8%)
		Self-employed with employees	36 (0.8%)	2,591 (0.4%)
	Full-time	Employee	1,439 (31.9%)	201,532 (34.4%)
		Self-employed without employees	395 (8.8%)	40,181 (6.9%)
		Self-employed with employees	169 (3.8%)	12,514 (2.1%)
		Un-employed	82 (1.8%)	21,321 (3.6%)
	Full-time student	106 (2.4%)	22,823 (3.9%)	
Economically inactive		Retired	824 (18.3%)	86,361 (14.8%)
		Student (including full-time students)	178 (4%)	35,446 (6.1%)
		Looking after home or family	211 (4.7%)	22,914 (3.9%)
		Long-term sick or disabled	70 (1.6%)	24,201 (4.1%)
		Other	79 (1.8%)	10,583 (1.8%)
Total			4,506	585,310



## Household Demographics

### Census 2011 Household Breakdown

There are proportionally twice as many detached houses/bungalows in Mayfield (55%), compared to the service average (25%). There is a lower proportion of purpose built flats (6% in Mayfield vs 19% for ESFRS), and converted flats (3% in Mayfield vs 11% in ESFRS). This is also the case for terraced houses/bungalows, with 11% of households in Mayfield compared to 19% service wide.

Households (2011) by Type (% Within Area)									
Unshared Dwelling								Shared Dwelling	Total
Detached House / Bungalow	Semi-detached House / Bungalow	Terraced House / Bungalow	Flat - Purpose Built	Flat - Converted	Flat - commercial building	Caravan / other temporary structure			
Mayfield	1,462 (55.2%)	637 (24.1%)	289 (10.9%)	148 (5.6%)	78 (2.9%)	29 (1.1%)	5 (0.2%)	0 (0%)	2,648
ESFRS	87,989 (24.9%)	81,338 (23%)	67,556 (19.1%)	66,813 (18.9%)	39,736 (11.2%)	5,167 (1.5%)	1,236 (0.3%)	3,610 (1%)	353,445

Mayfield has a significantly lower proportion of lone parent households, 2.6% of households compared to 6.5% as the service average. There are similar proportions of lone pensioners compared to the service average, and there are no all full-time student households.

Household Composition - Households (2011)				
	Lone Pensioner (65+)	All full-time students	Lone parent with dependent children	All Households
Mayfield	390 (14.7%)	0 (0%)	70 (2.6%)	2,648
ESFRS	52,103 (14.7%)	3,224 (0.9%)	22,980 (6.5%)	353,445

There is a higher proportion of households that are owned outright in Mayfield (46%) than the service area average (33%), this is also the case for mortgaged households (36% in Mayfield, 31% ESFRS). There is less than half the proportion of privately rented (private landlord/letting agent) in Mayfield with 9%, compared to the service average of 20%. There are also lower proportions of socially rented households (council and other) in Mayfield (5%) compared to the ESFRS average (12%).

Household Tenure - Households (2011)									
Owned		Shared ownership	Social rented:		Private rented:		Living rent free	Total	
Outright	Mortgage or loan		Rented from council	Other	Private landlord or letting agency	Other			
Mayfield	1,216 (45.9%)	958 (36.2%)	6 (0.2%)	75 (2.8%)	70 (2.6%)	224 (8.5%)	25 (0.9%)	74 (2.8%)	2,648
ESFRS	116,373 (32.9%)	108,974 (30.8%)	2,540 (0.7%)	22,903 (6.5%)	20,884 (5.9%)	71,980 (20.4%)	5,159 (1.5%)	4,632 (1.3%)	353,445

The table below shows the number of spare bedrooms in a household, this indicates overcrowding. Mayfield isn't an overcrowded area, with over half (55%) of households having 2 or more spare bedrooms, this is higher than the ESFRS average of 31%. Furthermore, there are fewer households with negative occupancy ratings, 1.2% have a rating of -1 compared to 3.6% service wide, and 0.2% have -2 rating compared to 0.4% for ESFRS.

Occupancy Rating (Spare Bedrooms) – Households (2011)						
	<i>Under-occupied</i>		<i>Standard</i>	<i>Overcrowded</i>		Total
	+2 or more	+1	0	-1	-2 or less	
Mayfield	1,466 (55.4%)	786 (29.7%)	360 (13.6%)	31 (1.2%)	5 (0.2%)	2,648
ESFRS	108,549 (30.7%)	121,288 (34.3%)	109,429 (31%)	12,863 (3.6%)	1,316 (0.4%)	353,445

### Mosaic Public Sector Household Breakdown

Mosaic Public Sector, published by Experian, is a socio-demographic classification system covering the whole of the United Kingdom. It provides an accurate and comprehensive view of citizens and their needs by describing them in terms of demographics, lifestyle, culture and behaviour. Over 850 million pieces of information across 450 different data points are condensed using the latest analytical techniques to identify 15 summary groups and 66 detailed types that are easy to interpret and understand.

There are 2,784 households within Mayfield station admin area across the station area. Which are broken down by the 15 summary Mosaic Lifestyle groups.

Mosaic Lifestyle Group	Mayfield	%	ESFRS	%
A - Country Living	1,763	63.3	30,907	8.5
B - Prestige Positions	308	11.1	27,774	7.6
C - City Prosperity	0	0.0	21,862	6.0
D - Domestic Success	31	1.1	27,215	7.5
E - Suburban Stability	6	0.2	24,684	6.8
F - Senior Security	14	0.5	39,762	10.9
G - Rural Reality	598	21.5	17,553	4.8
H - Aspiring Homemakers	16	0.6	24,898	6.8
I - Urban Cohesion	0	0.0	14,427	4.0
J - Rental Hubs	11	0.4	50,913	14.0
K - Modest Traditions	0	0.0	10,777	3.0
L - Transient Renters	4	0.1	13,853	3.8
M - Family Basics	0	0.0	20,841	5.7
N - Vintage Value	33	1.2	26,701	7.3
O - Municipal Challenge	0	0.0	11,485	3.2
<b>Total</b>	<b>2,784</b>	<b>100</b>	<b>363,652</b>	<b>100</b>

The predominant Mosaic groups describe: Well-off owners in rural locations enjoying the benefits of country life and 'Householders living in inexpensive homes in village communities'. The top 3 Mosaic Types within Mayfield Station area are:

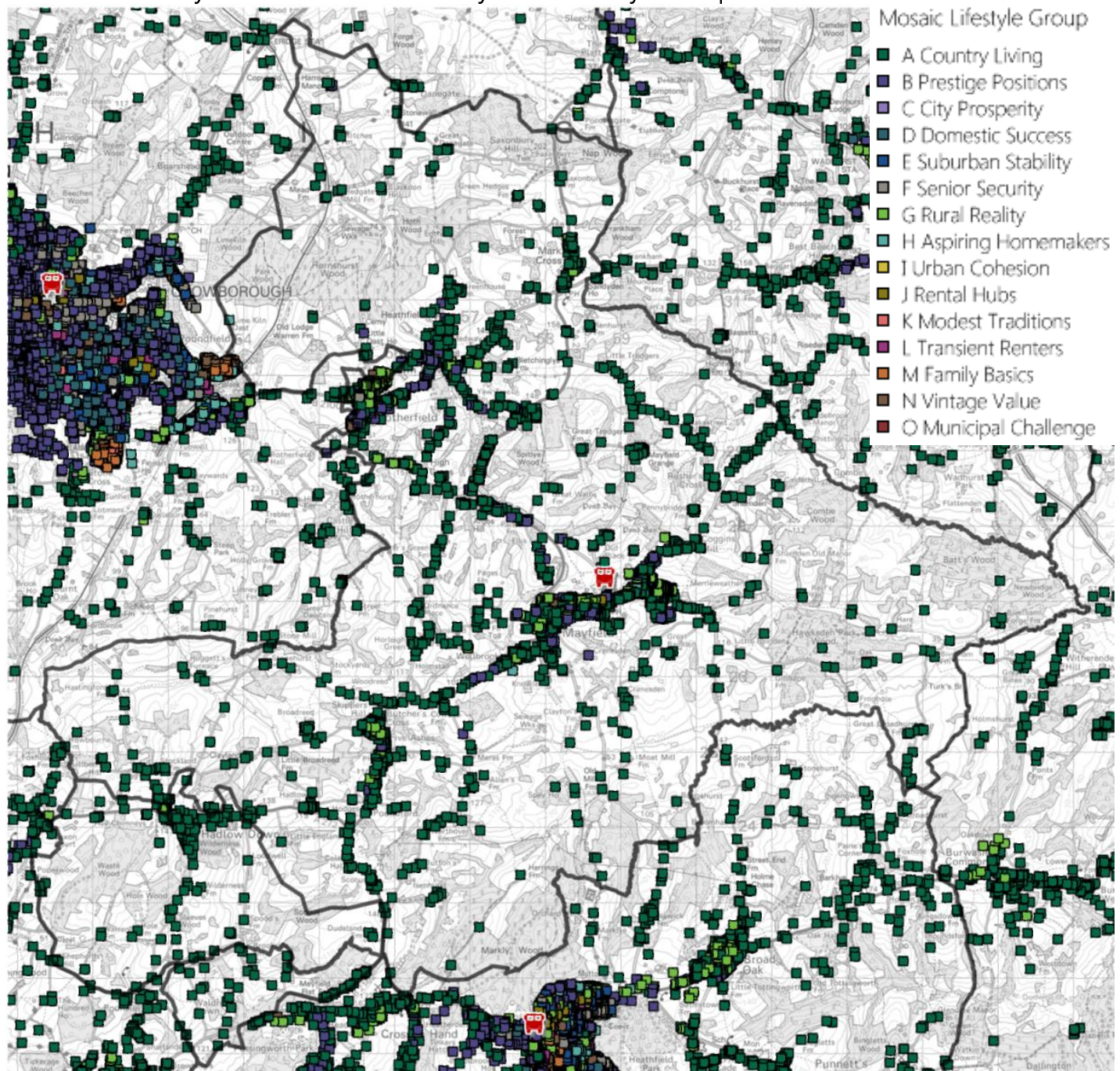
A03 Wealthy Landowners: Prosperous owners of country houses including the rural upper class, successful farmers and second-home owners.

A04 Village Retirement: Retirees enjoying pleasant village locations with amenities to service their social and practical needs.

G29 Satellite Settlers: Mature households living in expanding developments around larger villages with good transport links.

These 3 types of household have had few dwelling fires over the past 9 years and, compared to the base population, have a lower propensity to having a dwelling fire – they have 25-55% fewer dwelling fires than one would expect. The map below shows the dispersal of households across the station area.

Households in Mayfield Station Admin area by Mosaic Lifestyle Group

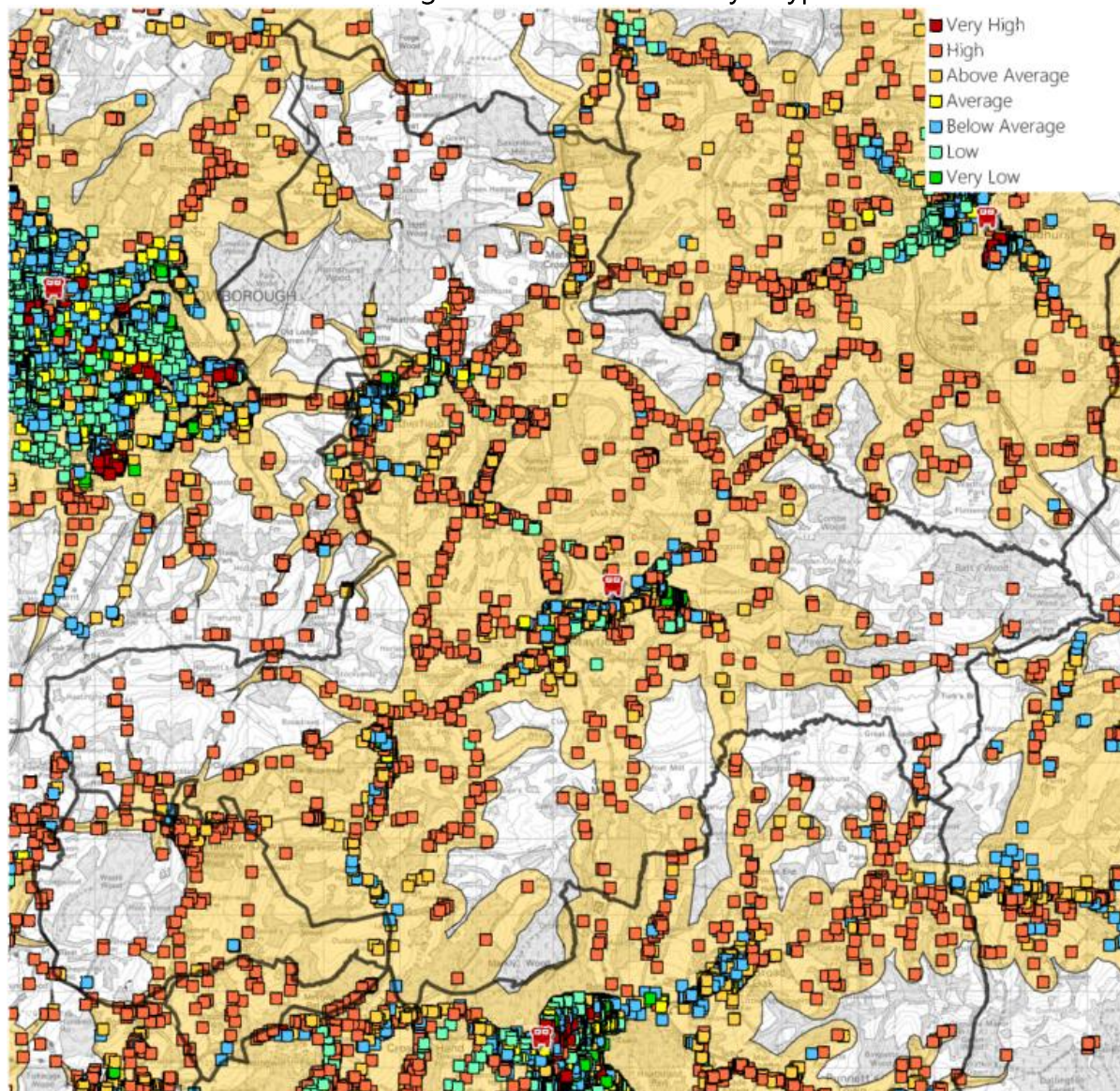


The map below shows the dispersion of mosaic households, classified by their initial fire risk rating, which is based on a combination of the number of fires and propensity to having a fire within each mosaic type. Those that have historically had a higher prevalence of and/or higher likelihood to having a fire are ranked higher. The risk rating is a relative risk and is a useful way to show socio-demographic risk, in the absence of additional risk information that ESFRS glean from other sources.

### Households in Mayfield Station Admin area by Initial Fire Risk Rating

Station Area	Very High	High	Above Average	Average	Below Average	Low	Very Low	Total
Mayfield	33	1,054	690	45	712	180	70	2,784
Mayfield (%)	1.2%	37.9%	24.8%	1.6%	25.6%	6.5%	2.5%	100%
ESFRS (%)	18.4%	21.7%	11.5%	13.9%	17.2%	13.0%	4.3%	100%

### Household Fire Risk – Initial Rating based on Mosaic Lifestyle Type



Station Admin Area	Very High	Within Att. Standard (Day)	%	Within Att. Standard (Night)	%	High	Within Att. Standard (Day)	%	Within Att. Standard (Night)	%
Mayfield	33	33	100.0	33	100.0	1,097	1,042	95.0	1,056	96.3

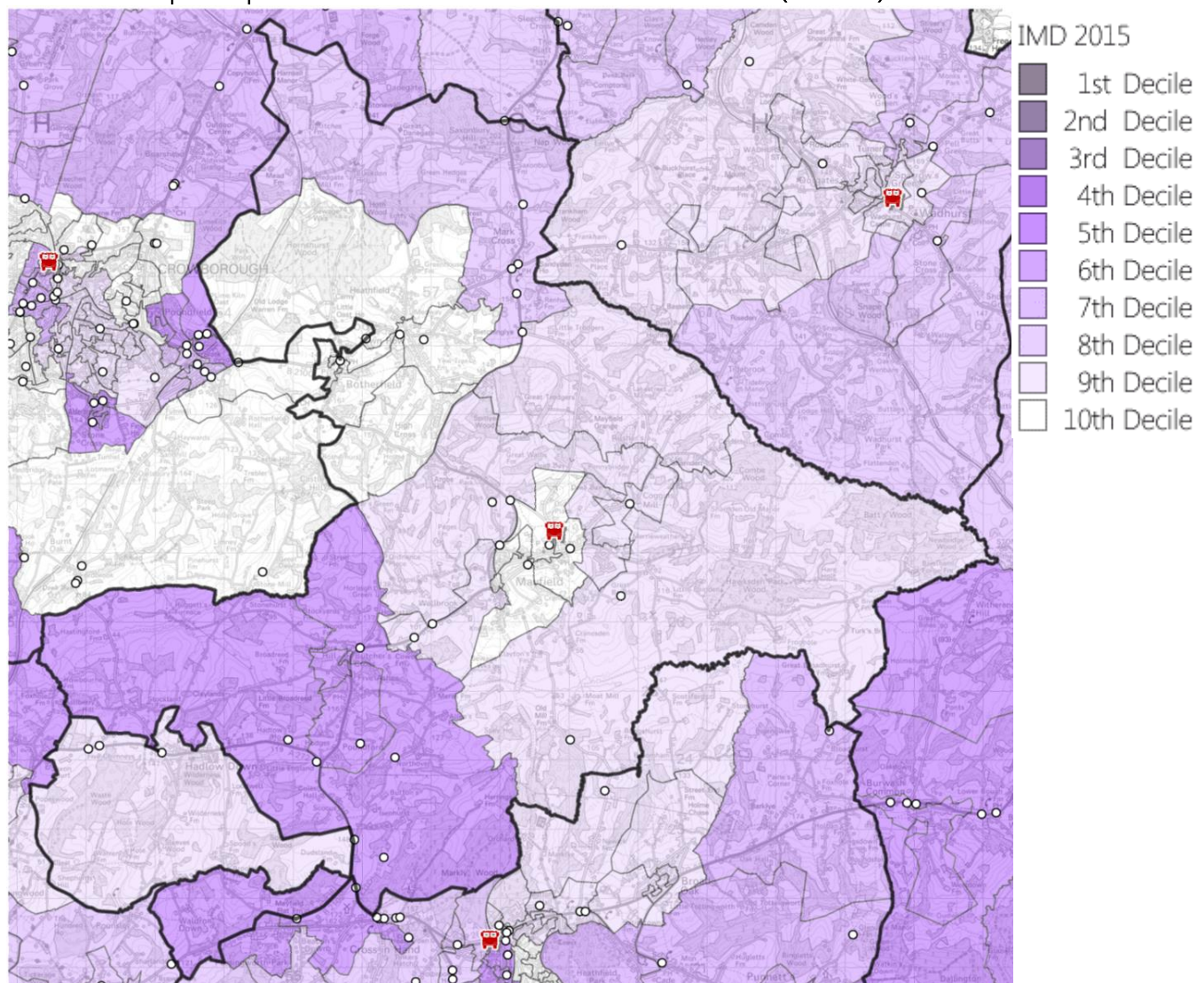
Overall, 98% of households in Mayfield station area are within ESFRS attendance standards, for both day and night. It can be seen that approximately 64% of households are deemed to represent an above average, high or very high fire risk. All of the very high risk households fall within the attendance standard isochrones, and 95% of the high risk households are within the standard (96% at night).

### Holiday Parks

There are no major holiday parks in Mayfield station area.

The following map shows the Index of Multiple Deprivation (2015) deciles. IMD deciles measure the relative deprivation of an area compared with the whole of England and Wales and takes 7 domains of deprivation into consideration, namely: Income, Employment, Education, Health, Crime, Barriers to housing & services & Living environment. There is a positive correlation between deprivation and the numbers of incidents to which ESFRS respond. i.e. the more deprived an area, the more incidents to which we respond to.

Index of Multiple Deprivation 2015 Deciles with 'Critical Incidents' (2013-18)



It can be seen that there are many neighbourhoods within Mayfield station area that are within the top 10% least deprived areas nationally – these are located in Mayfield and Rotherfield. Furthermore, the the majority of the areas on the outskirts of Mayfield Village are within the top 20% least deprived nationally.

## Incidents

### Incidents occurring within Mayfield Station Area

The analysis of historical incidents has been split into two sections in order to identify both the geographic location of the incident and each fire appliance's incident activity. This section deals with historical incidents that have occurred within the geographical station area of Mayfield – irrespective of which appliance(s) were mobilised to the incident. This helps identify the types of incidents to which we have responded within Mayfield's area.

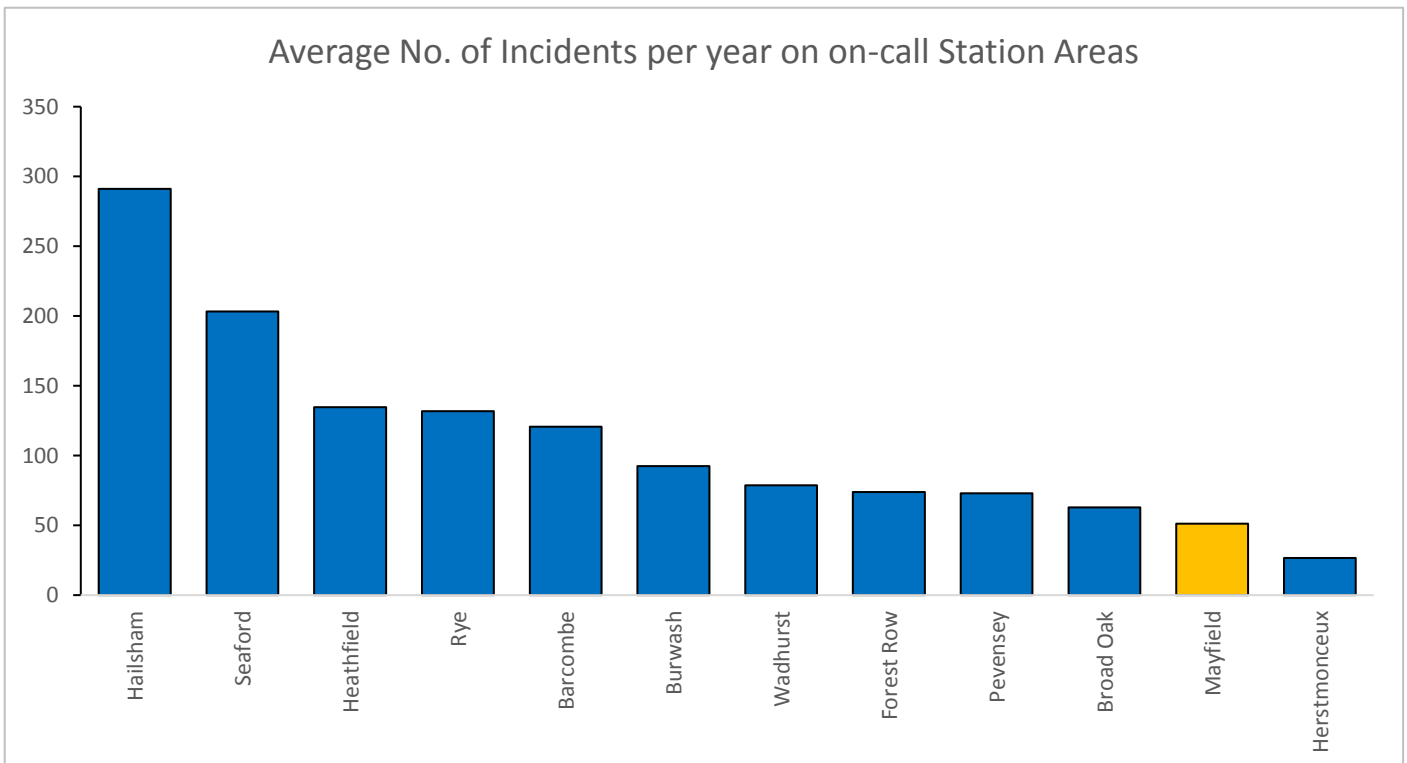
Between 2009/10 and 2017/18, incidents within Mayfield station area have decreased by 24%. However, it can be seen that the number of incidents 2009/10 was notably higher than all subsequent years.

### No. of Incidents within Mayfield Station Area per year

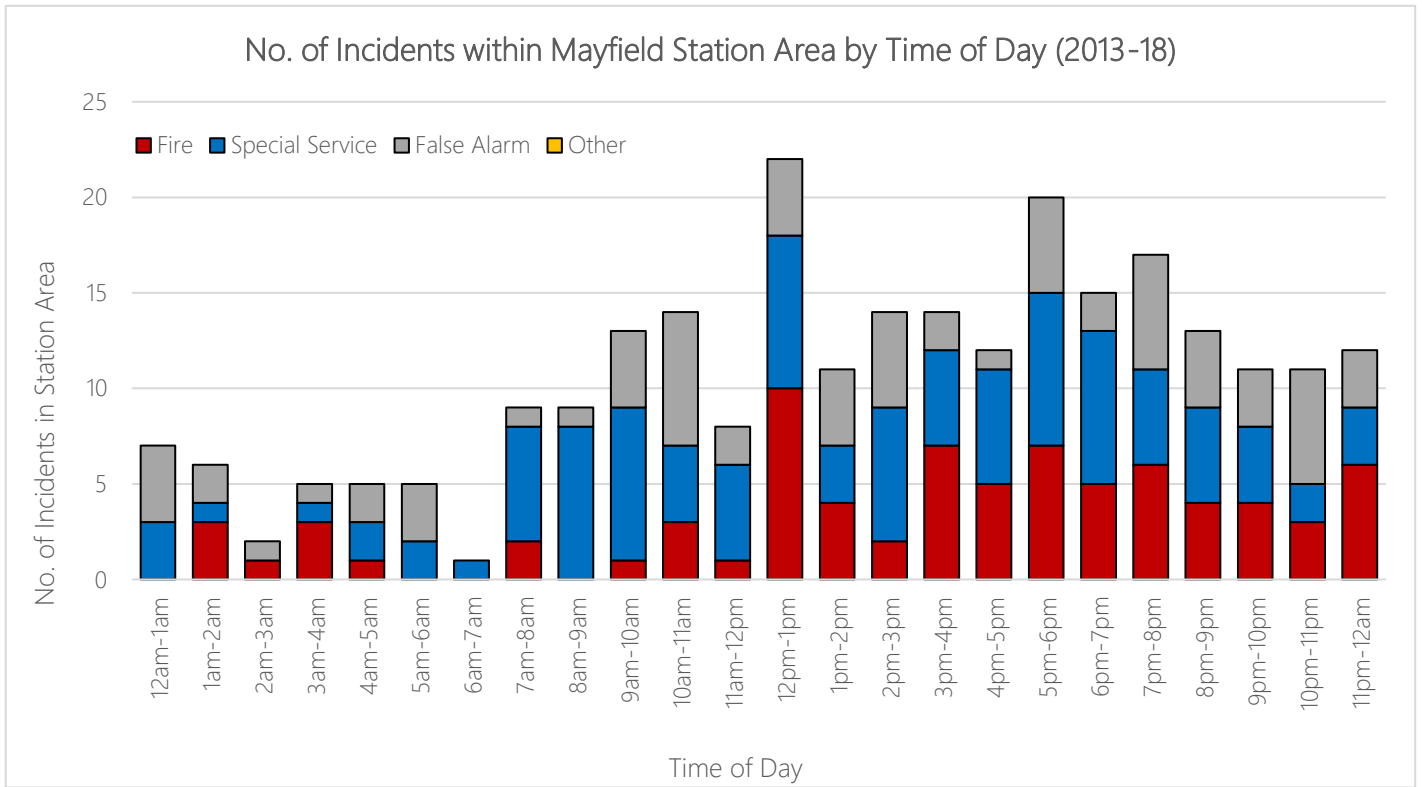
2009/10	2010/11	2011/12	2012/13	2013/14	2014/15	2015/16	2016/17	2017/18	Total
70	42	57	57	54	43	57	49	53	482

Between 2013-18, there were 256 incidents within the Mayfield station area, which equates to an average of 51 incidents per year – only Herstmoceux had fewer incidents with a yearly average of 27.

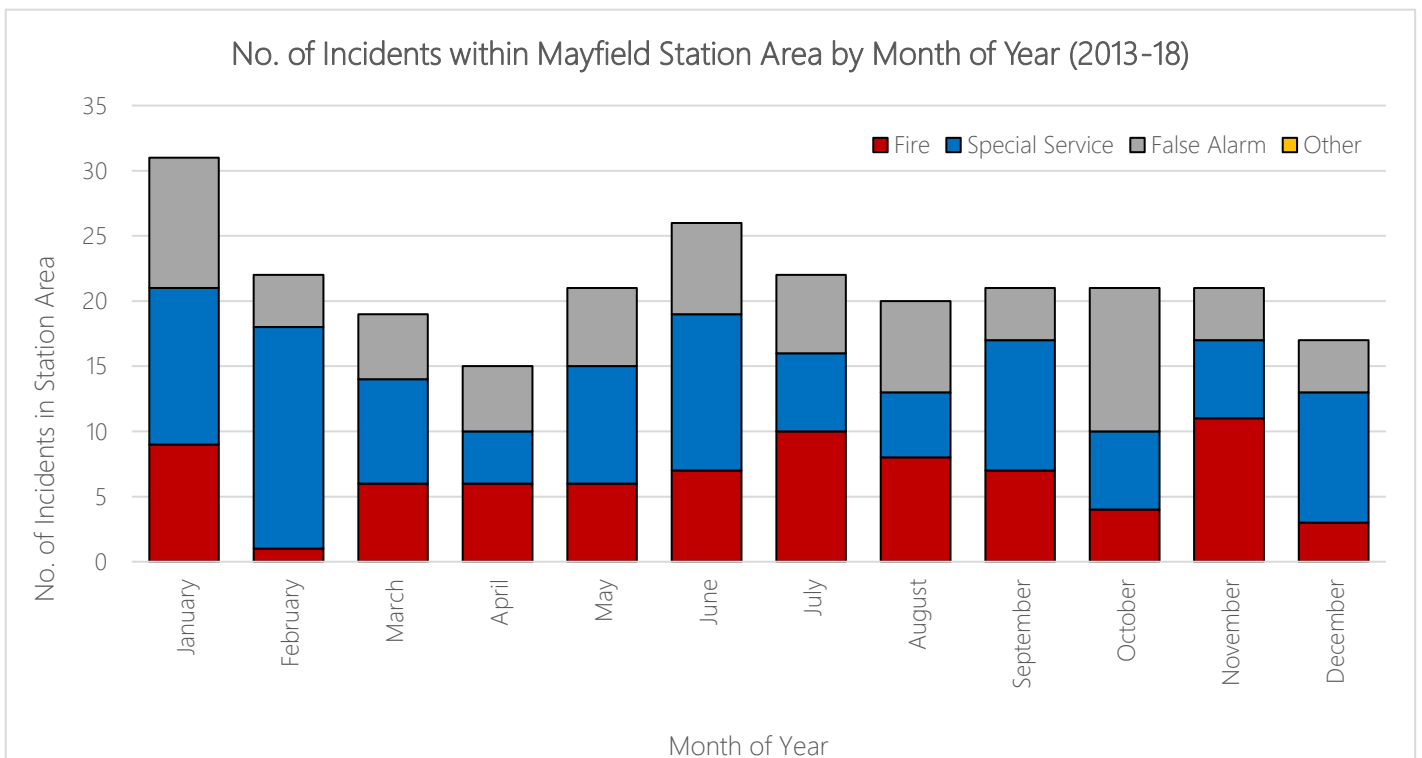
Mayfield station area ranks 23 out of all 24 geographical station areas in terms of the numbers of incidents occurring within its area. Comparing with the other on-call station areas across ESFRS, Mayfield ranks 11<sup>th</sup> out of 12, making it the second least busy station area in ESFRS.



The following charts show the distribution of incidents by time of day and month of year. The shape of these distributions follows a typical distribution. However the pattern is less uniform due to the low number of incidents in the station area. It can be seen that incidents peak at 12-1pm which is earlier than the general trend.



The general trend for ESFRS is that more incidents occur during the summer months compared to winter. However it can be seen that this is not the case for Mayfield, with January being the busiest month for incidents. This may be due to the increased use of chimneys in the peak of winter. The rest of the months follow the expected trend, with June being the second highest month.





The following table illustrates the types of incidents that have occurred within Mayfield station area over the past 9 years. There are proportionally three times as many RTC incidents in Mayfield (17.6%), compared to the rest of the service (5.1%). Furthermore, there are proportionally more chimney fires in Mayfield (7.8%) compared to the rest of the service (1.6%), this is also the case for animal assistance incidents, with twice the proportion in Mayfield (5.5%) compared to the ESFRS average (2.3%).

### No. of Incidents within Mayfield Station Area by Incident Type

Incident Type	2009/10	2010/11	2011/12	2012/13	2013/14	2014/15	2015/16	2016/17	2017/18	Total	5yr Ave.	%	% ESFRS
Primary Fire - Dwelling	2	3	3	8	3	1	2	5	7	34	4	7.0	6.3
Primary Fire - Non Residential	2	1	0	2	1	4	3	2	1	16	2	4.3	2.1
Primary Fire - Other Residential	0	0	0	0	0	1	0	1	0	2	0	0.8	0.6
Primary Fire - Vehicle	4	8	4	3	1	3	1	4	2	30	2	4.3	2.7
Primary Fire - Outdoor	1	1	0	0	1	2	0	0	0	5	1	1.2	0.9
Chimney Fire	11	3	8	5	1	4	8	4	3	47	4	7.8	1.6
Secondary Fire	4	7	6	4	4	3	2	3	1	34	3	5.1	8.1
Fire - Classification Not Recorded	0	0	0	0	0	0	0	0	0	0	0	0.0	0.1
Special Service - Advice Only	0	0	0	0	0	0	0	0	0	0	0	0.0	0.3
Special Service - Animal assistance incidents	5	0	2	1	3	5	1	3	2	22	3	5.5	2.3
Special Service - Assist other agencies	0	0	1	2	2	1	2	0	1	9	1	2.3	1.7
Special Service - Effecting Entry/Exit	0	1	1	0	1	0	2	2	0	7	1	2.0	3.9
Special Service - Evacuation (no fire)	0	0	0	0	0	0	0	0	0	0	0	0.0	0.0
Special Service - Flooding	2	0	0	2	3	1	3	4	1	16	2	4.7	4.2
Special Service - Hazardous Materials	0	0	0	0	0	0	0	0	1	1	0	0.4	0.3
Special Service - Lift Release	0	0	0	0	0	1	0	0	0	1	0	0.4	3.7
Special Service - Making Safe (not RTC)	2	0	0	0	4	0	3	1	0	10	2	3.1	1.8
Special Service - Medical Incident	0	0	0	0	0	0	0	0	0	0	0	0.0	0.2
Special Service - No action (not false alarm)	1	0	0	0	0	0	0	0	0	1	0	0.0	0.7
Special Service - Other rescue/release of persons	1	0	0	1	1	0	0	2	4	9	1	2.7	1.0
Special Service - Other Transport	0	0	1	0	0	1	0	0	0	2	0	0.4	0.3
Special Service - Removal of objects from people	0	0	0	0	0	0	0	0	0	0	0	0.0	0.6
Special Service - Removal of people from objects	0	0	0	0	0	0	0	1	0	1	0	0.4	0.3
Special Service - Rescue or evacuation from water	0	0	0	0	0	0	0	0	0	0	0	0.0	0.1
Special Service - RTC	15	8	5	10	8	7	8	7	15	83	9	17.6	5.1
Special Service - Spills and Leaks (not RTC)	4	0	0	0	1	0	0	0	2	7	1	1.2	1.1
Special Service - Stand By	0	0	0	0	0	0	0	0	0	0	0	0.0	0.0
Special Service - Suicide	0	0	0	1	0	0	0	1	0	2	0	0.4	0.1
Special Service - Unknown	0	0	0	0	0	0	0	0	0	0	0	0.0	0.2
Special Service - Water provision	0	0	0	0	0	0	0	0	0	0	0	0.0	0.0
False Alarm - Apparatus	10	5	17	9	13	8	12	8	9	91	10	19.5	34.6
False Alarm - Good Intent	6	5	9	9	7	1	10	1	3	51	4	8.6	13.6
False Alarm - Malicious	0	0	0	0	0	0	0	0	1	1	0	0.4	1.3
False Alarm - Unknown	0	0	0	0	0	0	0	0	0	0	0	0.0	0.2
Other	0	0	0	0	0	0	0	0	0	0	0	0.0	0.0
<b>Grand Total</b>	<b>70</b>	<b>42</b>	<b>57</b>	<b>57</b>	<b>54</b>	<b>43</b>	<b>57</b>	<b>49</b>	<b>53</b>	<b>482</b>	<b>51</b>	<b>100</b>	<b>100</b>

In addition to the above table, which breaks down fires by property type, special services by special service type and false alarms by false alarm type, the following table further breaks down false alarms by property type. It can be seen that 70% of false alarms are to residential dwellings, which is 30% higher than the average proportion across ESFRS. Proportionally there are a greater number of outdoor false alarms compared to ESFRS as a whole, and proportionally fewer false alarms in non-residential and other residential premises.

#### No. of False Alarms by Property Type (Apr 2013 - Mar 2018)

Property Type	Mayfield	ESFRS
Dwelling	51 (69.9%)	11,127 (49%)
Non-Residential	8 (11%)	6,612 (29.1%)
Other Residential	1 (1.4%)	2,181 (9.6%)
Outdoor	9 (12.3%)	1,762 (7.8%)
Outdoor Structure	(0%)	194 (0.9%)
Road Vehicle	2 (2.7%)	443 (2%)
Unknown	2 (2.7%)	377 (1.7%)
<b>Total</b>	<b>73</b>	<b>22,696</b>

The following table shows the number of critical incidents that occur within Mayfield station area over the past 9 years. This equates to an average of 6 incidents per year which result in a rescue or some form of injury (special service rescues (excl. RTCs) with no injury are not included in the calculation). Given that approximately 51 incidents occur within Mayfield area each year, this represents around 12% of incidents have some form of life risk, which is higher than the ESFRS average of 5.2%.

#### No. of Critical Incidents within Mayfield Station Admin Area

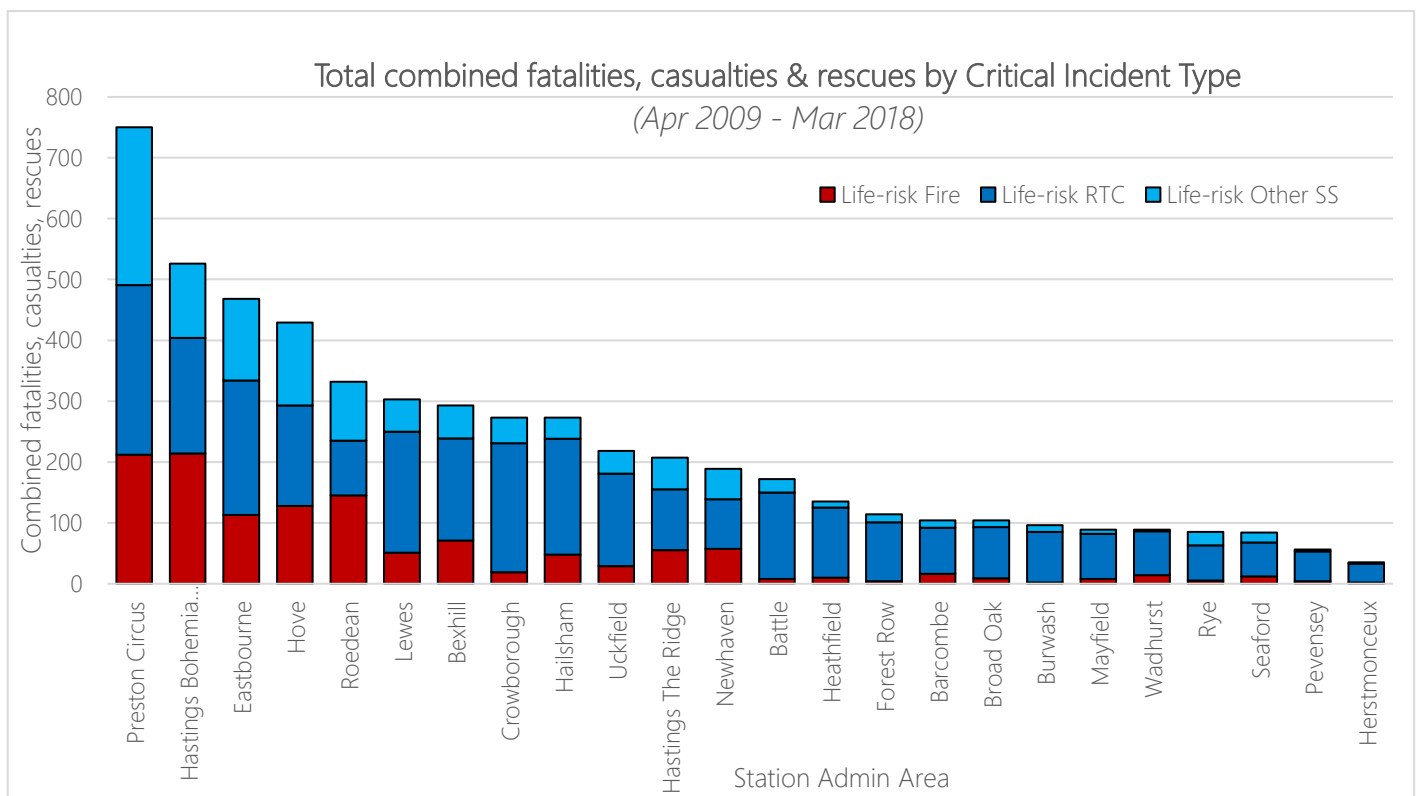
Critical Incidents	2009/10	2010/11	2011/12	2012/13	2013/14	2014/15	2015/16	2016/17	2017/18	Total
Life-risk Fire	1	1	0	1	1	1	0	1	0	6
Life-risk RTC	5	8	3	7	4	4	3	3	4	41
Life-risk Special Serv.	0	0	0	1	0	0	3	1	2	7
<b>Total</b>	<b>6</b>	<b>9</b>	<b>3</b>	<b>9</b>	<b>5</b>	<b>5</b>	<b>6</b>	<b>5</b>	<b>6</b>	<b>54</b>

The table below shows the actual numbers of fatalities, casualties and rescues recorded against each critical incident type over the past 9 years. It can be seen that 54 critical incidents have resulted in 89 injuries and/or rescues over the past 9 years (9.9 fatalities, casualties, rescues per year), thus each critical incident in Mayfield area gives rise to 1.65 casualties. This is higher than the ESFRS average of 1.26 casualties to every critical incident.

**No. of fatalities, casualties and rescues within Mayfield Station Area (Apr 09 – Mar 18)**

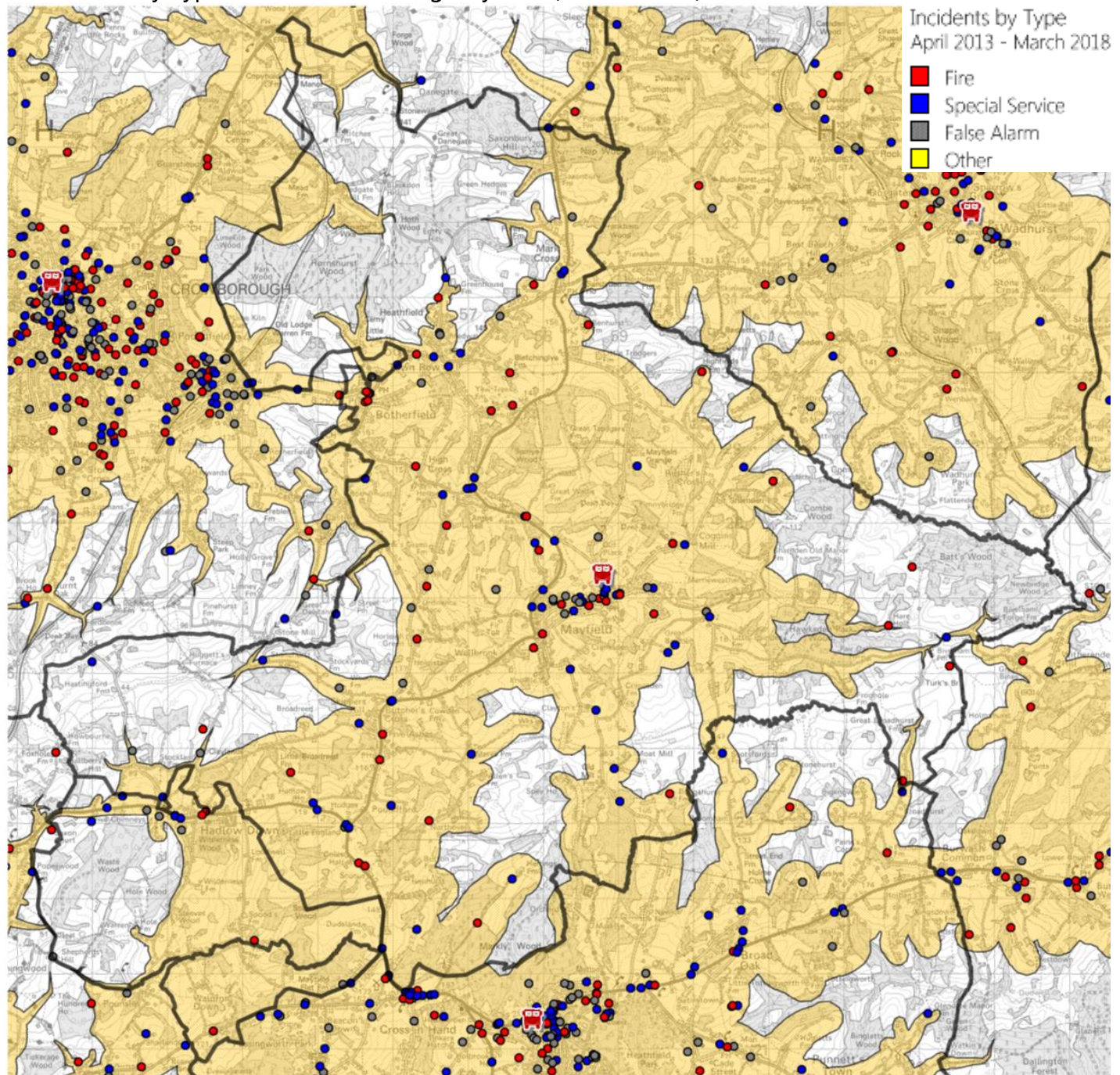
Casualty Severity	Fire	RTC	Other SS.	Total
Fatal Injury	0	2	1	3
Serious Injury	1	13	2	16
Slight Injury	3	43	2	48
First Aid/Prec. Check	4	9	2	15
Rescue (No Injury)	0	7	0	7
<b>Total Life-Risk</b>	<b>8</b>	<b>74</b>	<b>7</b>	<b>89</b>

Mayfield ranks 19<sup>th</sup> out of the 24 station areas (or 7<sup>th</sup> out of 12 on-call areas) regarding combined numbers of fatalities, casualties and rescues as demonstrated on the following chart.



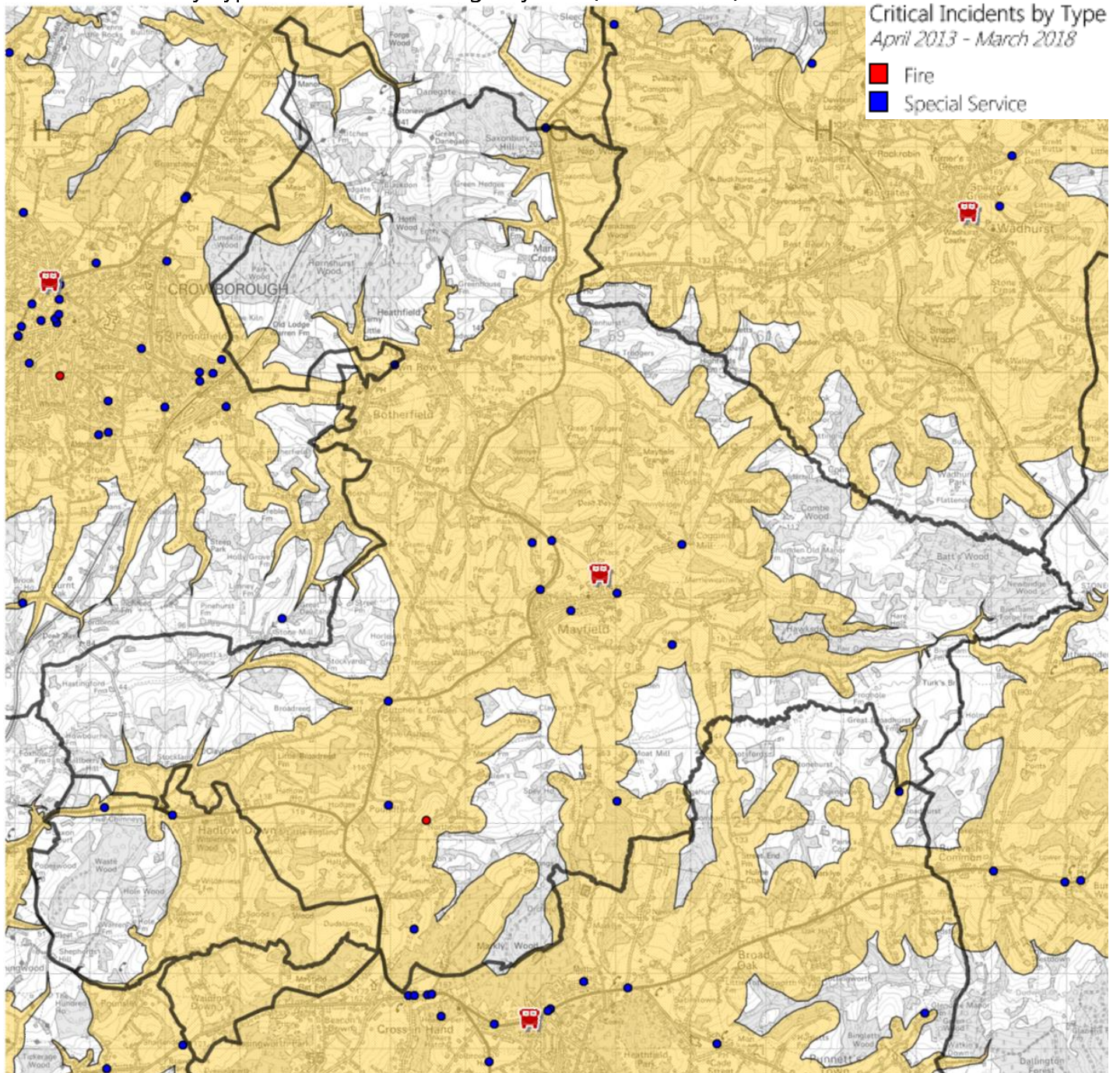
55% of incidents within Mayfield station area occurred during the daytime (between 08:30 and 18:30). The map below shows all daytime incidents over the last 5 years, with daytime attendance standards coverage overlaid. 96% of daytime incidents fall within the attendance standards isochrone.

All Incidents by Type that occurred during 'daytime' (08:30 – 18:30) between 2013-18



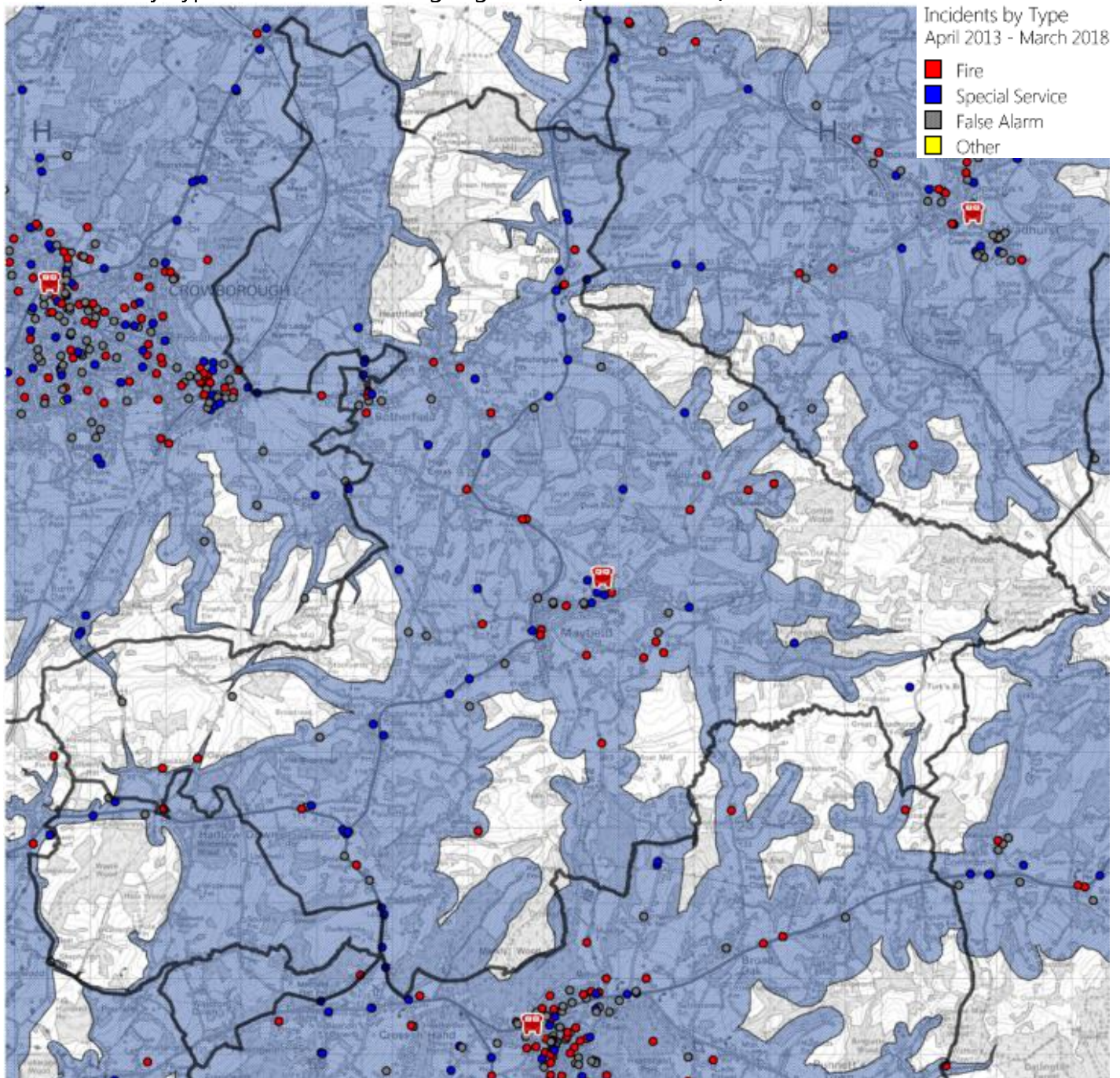
The following map now only show critical incidents that occurred within Mayfield station area during the day. 44% of critical incidents occurred during the daytime (between 08:30 and 18:30). 100% fall within the attendance standards isochrone.

### Critical Incidents by Type that occurred during 'daytime' (08:30 – 18:30) between 2013-18



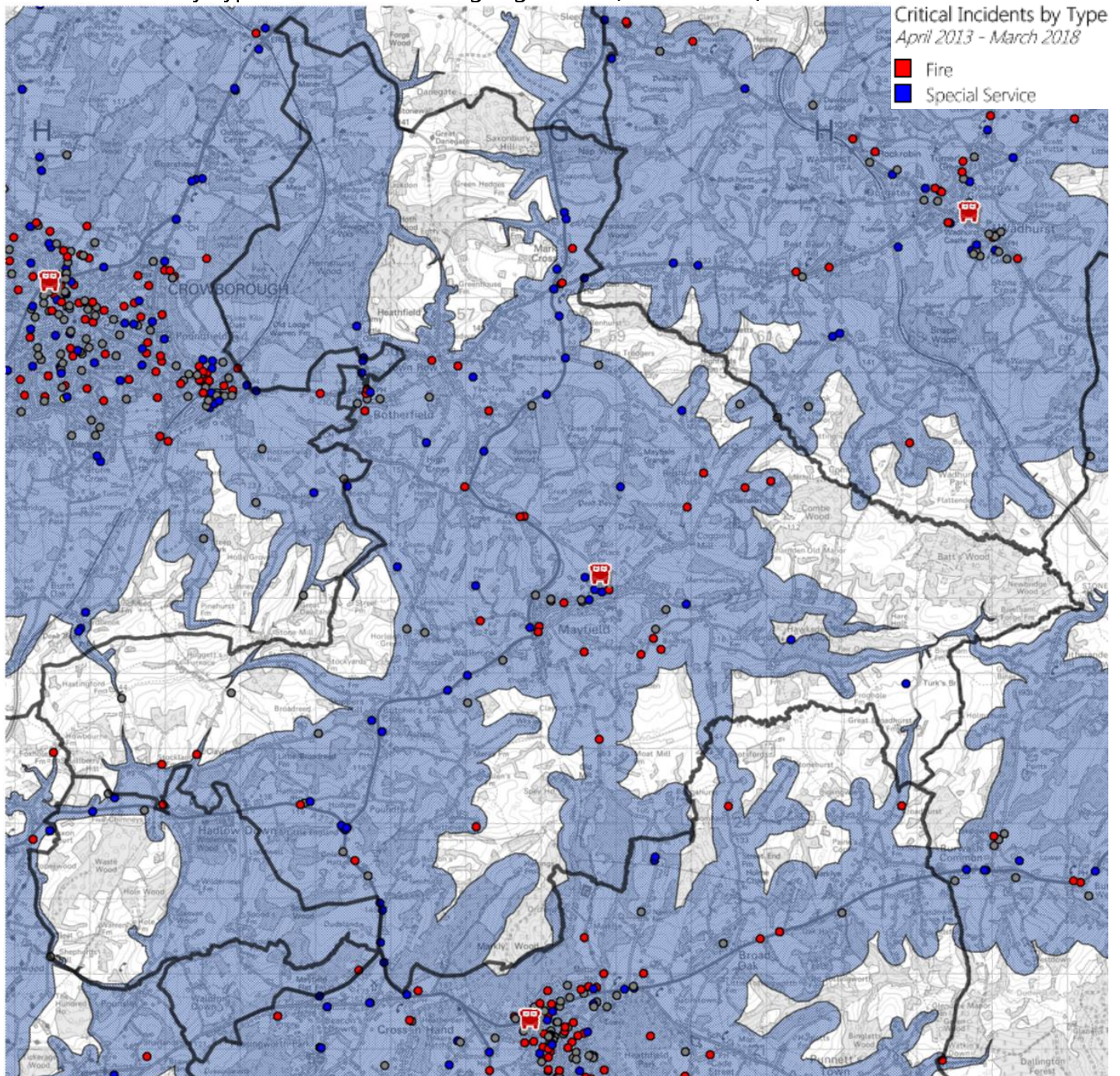
45% of incidents within Mayfield station area occurred during the night time (between 18:30 and 08:30). The map below shows all night time incidents over last 5 years, with night time attendance standards coverage overlaid. 96% of night time incidents fall within the attendance standards isochrone.

All Incidents by Type that occurred during 'night time' (18:30 – 08:30) between 2013-18

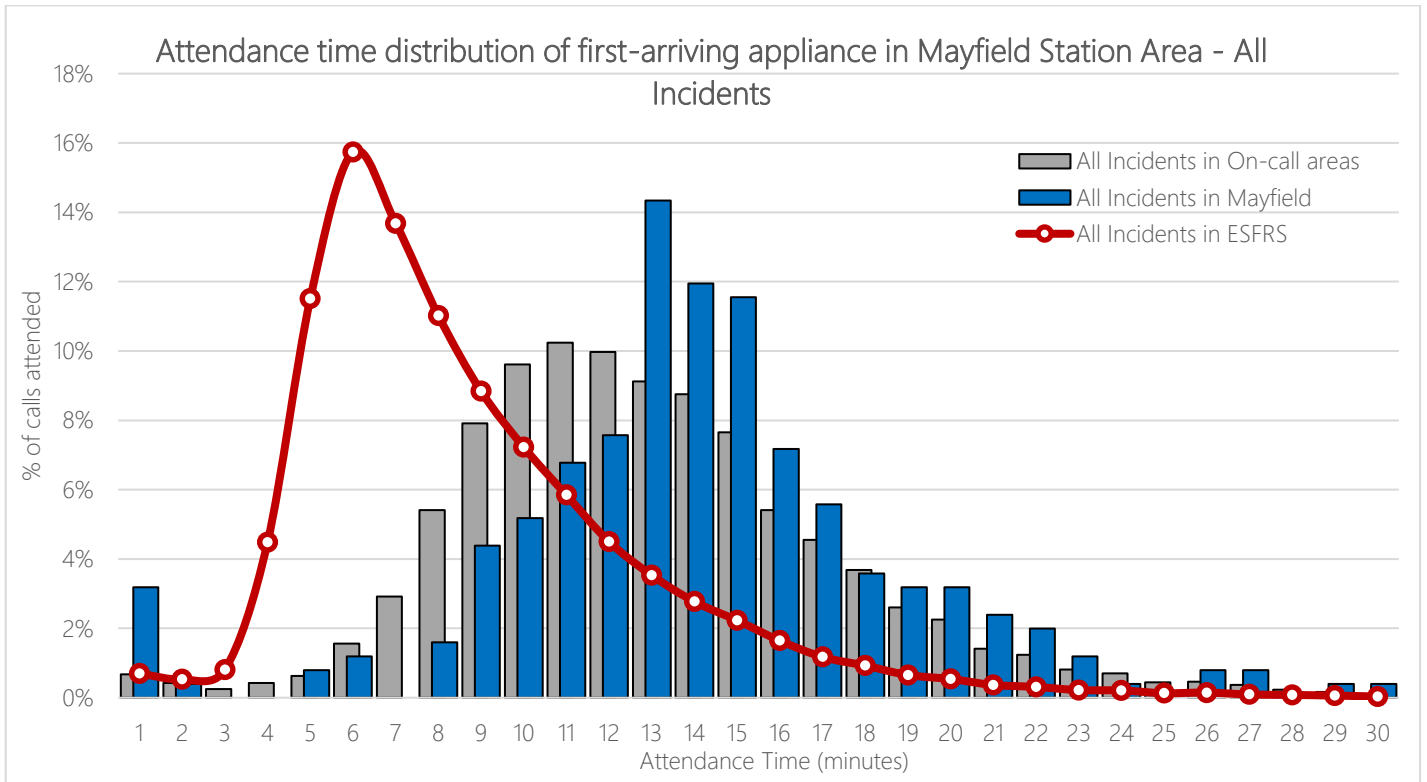


The following map now only shows critical incidents that occurred within Mayfield station area during the night. 56% of critical incidents occurred during the night time (between 18:30 and 08:30). 100% fall within the attendance standards isochrone.

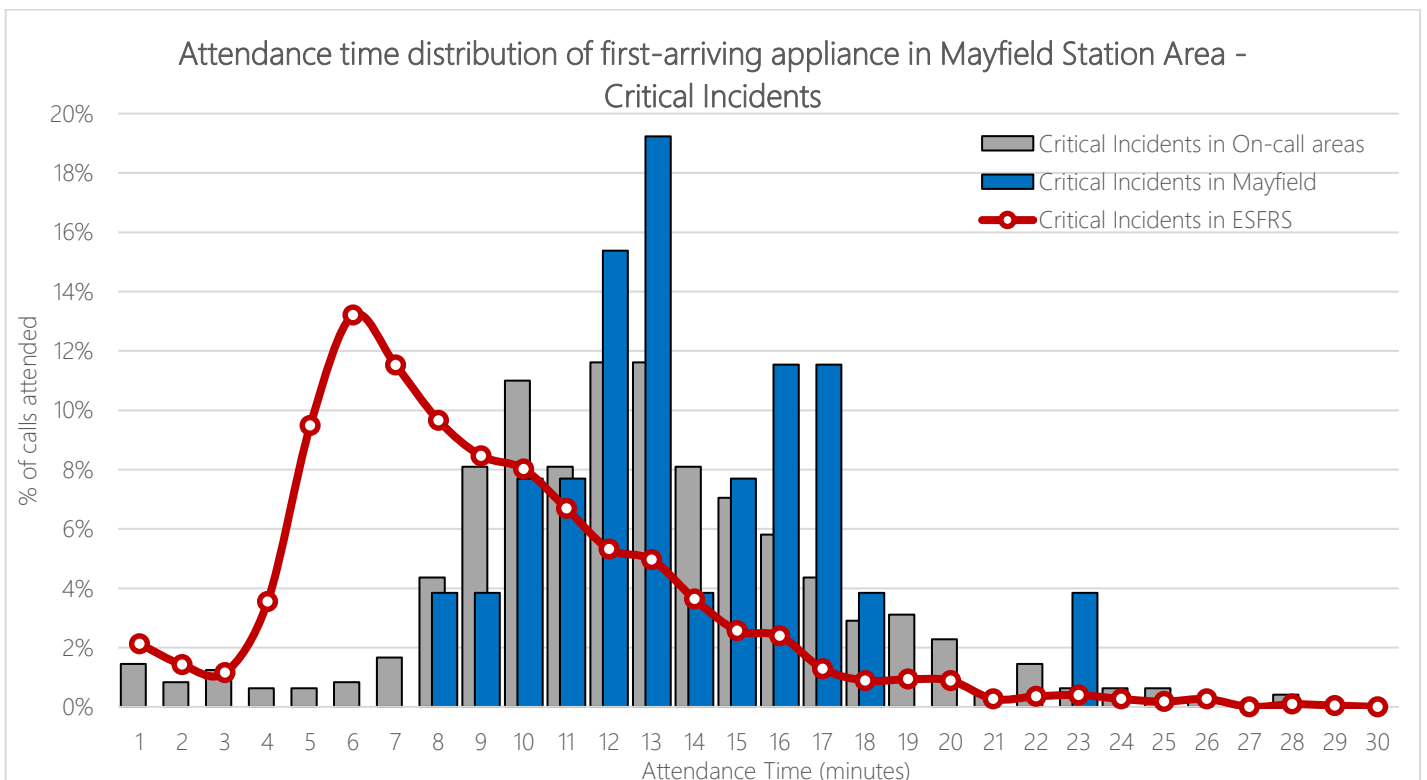
### Critical Incidents by Type that occurred during 'night time' (18:30 – 08:30) between 2013-18



The chart below shows the distribution of response times by minute intervals. These distributions are based on 5 years of data (Apr 2013 – Mar 2018) and help understand the range of response times to all types of incidents that have occurred within Mayfield Station area, compared with other areas. It can be seen that, compared to other on-call station areas, there are a greater proportion of initial attendances over 13 minutes, and fewer attendances between 5-12 minutes indicating that, overall, attendances to Mayfield are slower than other on-call station areas.

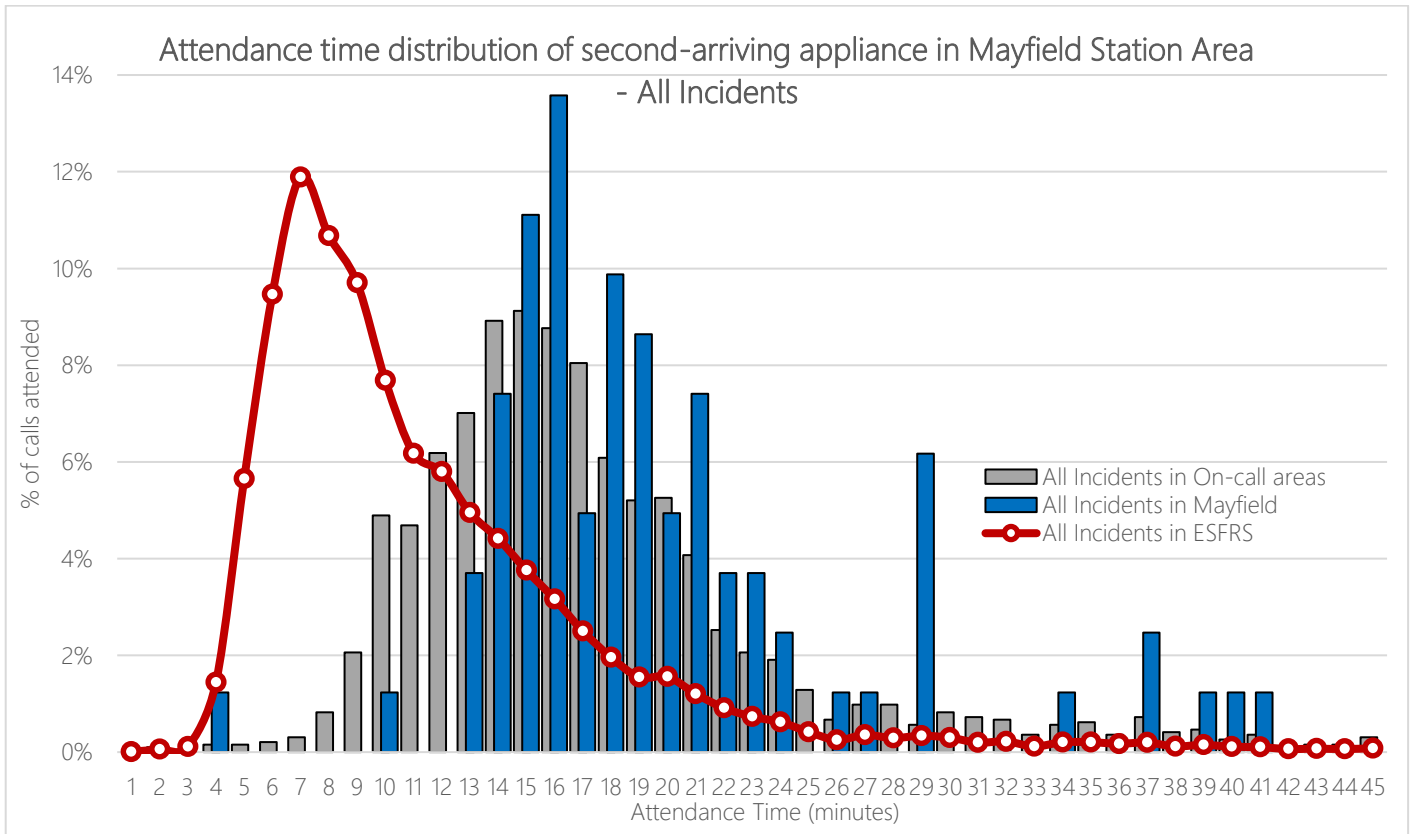


The following chart depicts similar information, but for critical incidents only. As there are fewer critical incidents within Mayfield area, the distribution curve is less uniform.

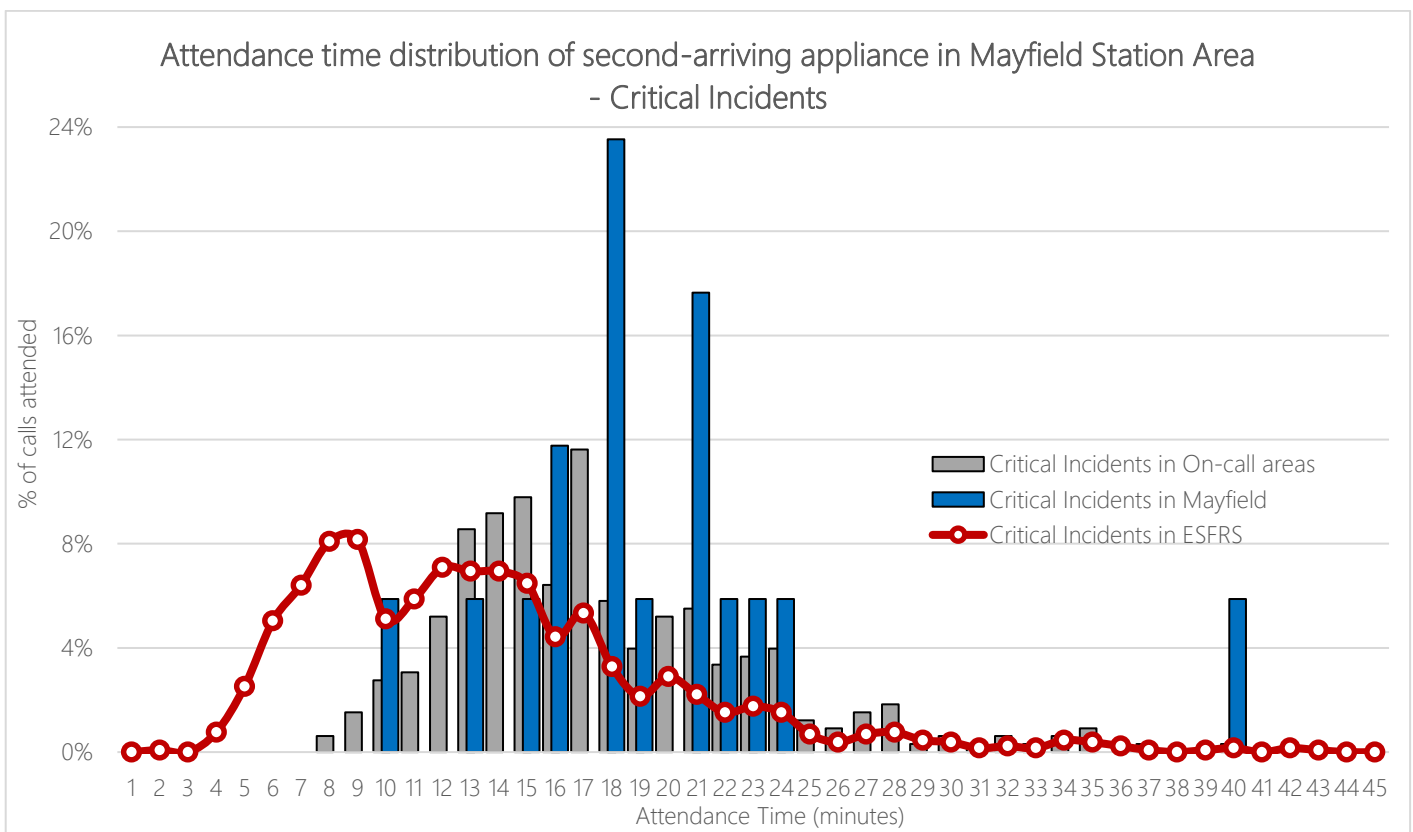




The chart below shows the distribution of response times to all incidents by minute intervals for the second appliance (where applicable) across a five year period (Apr 2013 – Mar 2018). It can be seen that, compared to the previous charts, the attendance times peak around 16 minutes for the arrival of the 2<sup>nd</sup> appliance compared to 13 minutes for the 1<sup>st</sup> appliance.



The chart below shows the distribution of attendance times to critical incidents across Mayfield station area for the 2<sup>nd</sup> appliance over a five year period (Apr 2013 – 2018).



The table below shows the average delay between the arrival of the first and second appliances within Mayfield station area for dwelling fires and RTCs – the two incident types represent where the majority of our life-risk incidents occur and where we typically send 2 pumping appliances as part of the initial PDA.

Mayfield has a dwelling fire lag time of 05:34, which is faster than the ESFRS on-call average. This is based on a small number of dwelling fire incidents where a second appliance attended, which is 15 incidents in 5 years. Please note that 20% of these had a lag time of over 3 hours (these have been excluded from the average lag time below).

Mayfield also have around a 2 minute higher lag time for RTC incidents, 07:15 minutes compared to the ESFRS on-call average of 04:52.

Incident Type	Ave. Lag Time in Mayfield	Ave. Lag Time across all On-call areas	Ave. Lag Time across ESFRS area
Primary Fire - Dwelling	05:34	08:06	03:21
Special Service - RTC	07:15	04:52	04:17

Between April 2013 and March 2018, 66% of incidents within the Mayfield station area were attended by a single fire appliance, which is in-line with the ESFRS average of 72%.

The table below shows, when there was a 2<sup>nd</sup> pump attendance, which appliances attended. FJE81P1 (Mayfield itself) was the 2<sup>nd</sup> pump on 23% of occasions, Crowborough were the next highest with 20%, then Heathfield (13%), Crowborough’s Landrover (10%), Uckfield (9%), and OTB appliances attended 2%.

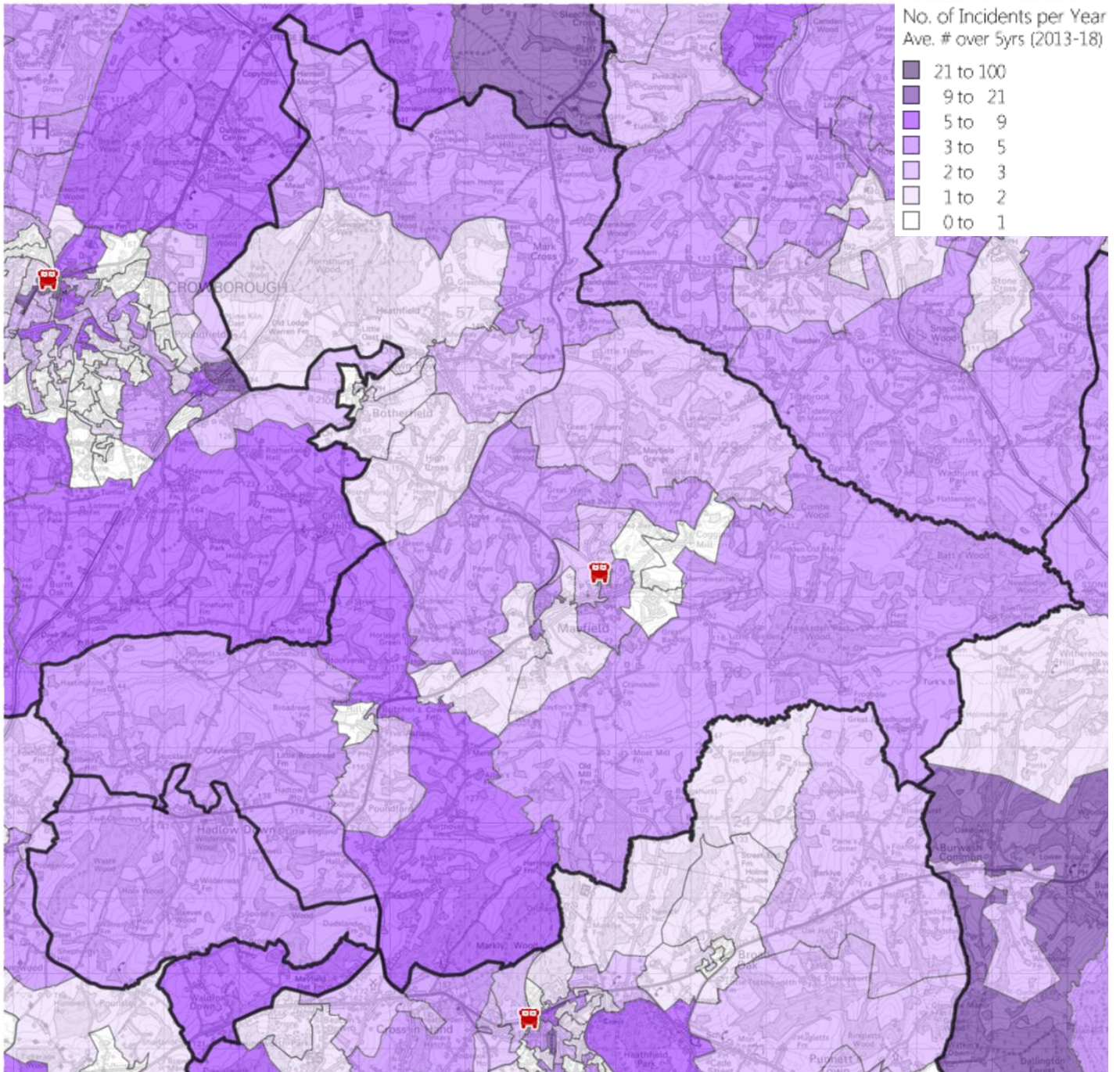
FJE81P1 (23%)	FJE83P1 (20%)	FJE82P5 (13%)	FJE83M1 (10%)	FJE84P1 (9%)	FJE78P5 (7%)	FJE83P4 (7%)	FJE82M1 (2%)	OTB Appliance (2%)	FJE74P1 (1%)	FJE76P1 (1%)
------------------	------------------	------------------	------------------	-----------------	-----------------	-----------------	-----------------	--------------------------	-----------------	-----------------

The following map shows, by output area, the average number of incidents to which it is mobilised per year (based on a 5 year average). An Output Area (OA) is a geographic area, designed specifically for statistical purposes by the Office of National Statistics and used to aggregate Census information. An OA contains approximately 130 households, so output areas in rural communities can cover a large geographic area but an inner-city output area might only cover a street or a cluster of densely populated high-rise premises.

The map seeks to demonstrate the areas where there have been the most incidents within the Mayfield station area over the past five years. The darker the shade, the more incidents have occurred in the area. The ranges have been calculated statistically using the ‘natural breaks’ algorithm.

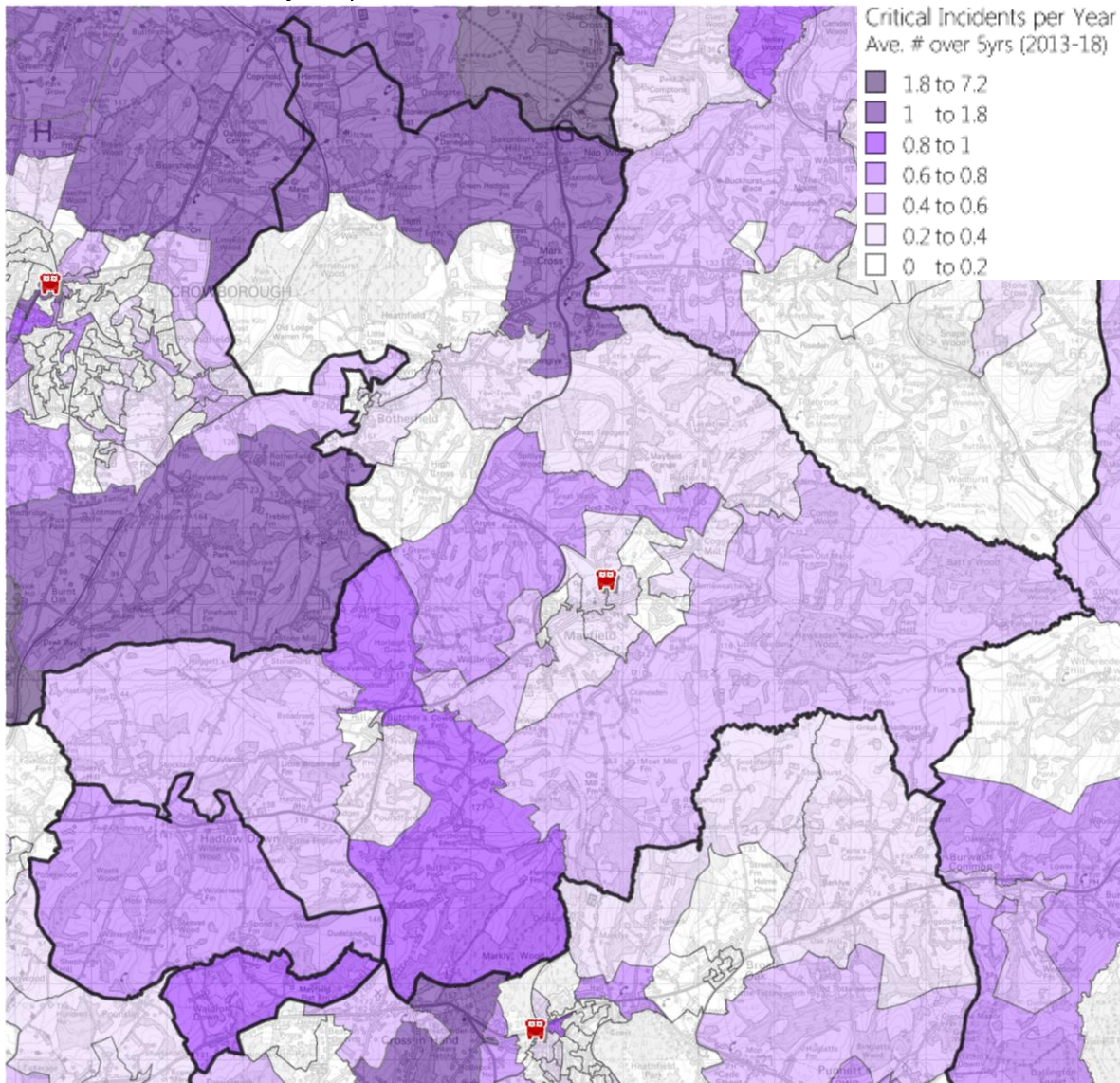
It can be seen that incidents are fairly well distributed around the station area with mostly low densities across the station area. There are areas of particularly low density on the outskirts of Mayfield village and in Rothfield. The highest density is just north of Heathfield, towards the south of the station area.

## Incident Density Map



The following map shows, by output area, the average number of critical incidents to which it is mobilised per year (based on a 5 year average). It can be seen that, overall, the number of incidents involving fatalities, casualties or rescues in Mayfield station area is very low. Please note, due to different ranges between the map below and the map above, direct colour comparisons should not be made. However the pattern of distribution shown below is similar to the previous map, showing all incidents.

## Critical Incident Density Map



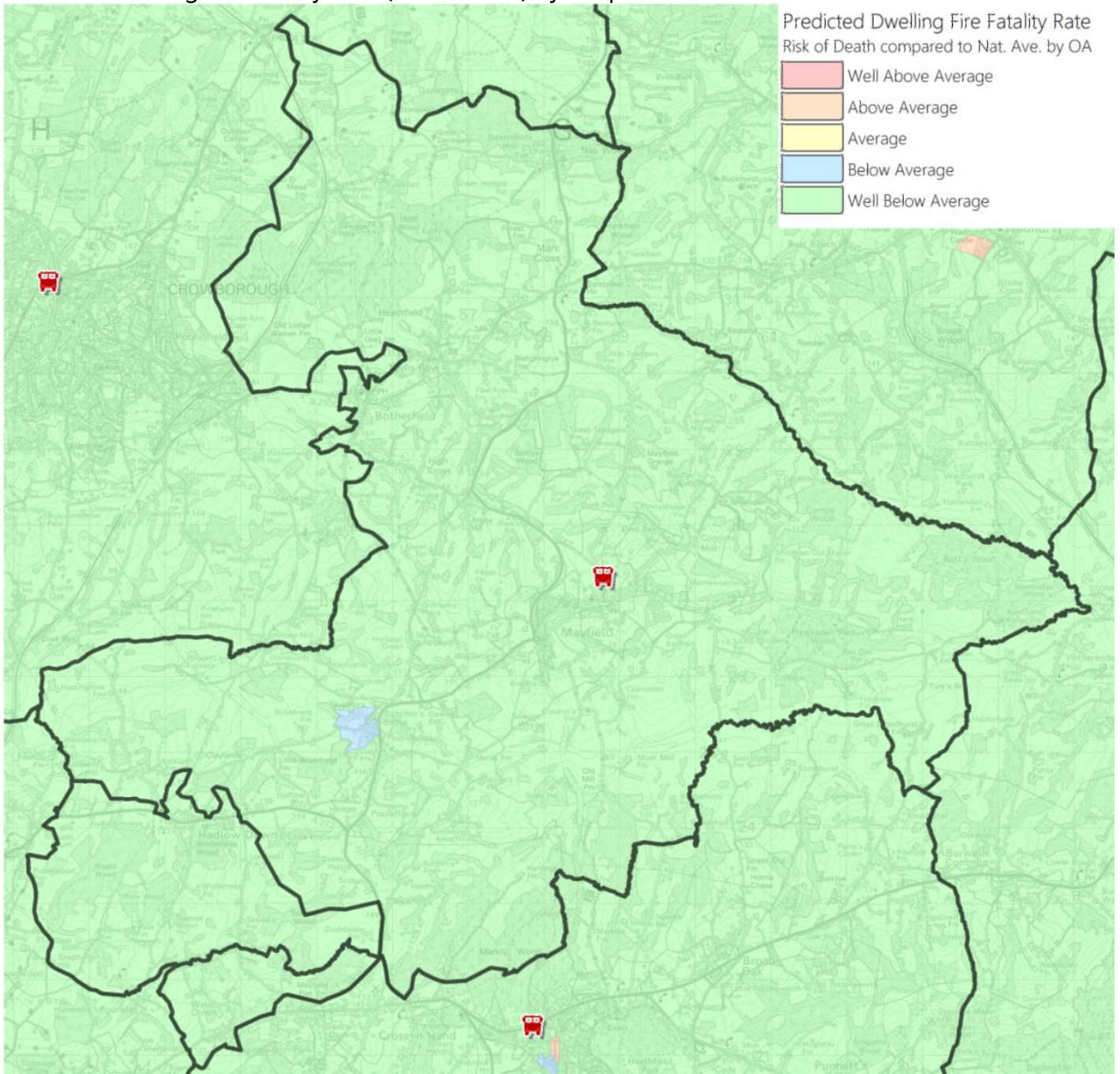
The following table illustrates the number of level 3 and 4 incidents that have occurred over the past 9 years within Mayfield station area. A level 3 incident is where between 7-9 pumping appliances are in attendance at the incident, whereas a level 4 incident represents where 10 or more pumping appliances attended. These incidents denote where significant resource was required in order to deal with a particular incident. There has been 1 level 3 incident over the past 9 years, but only occurring within the last year of the review period. However, the general trend of level 3+ incidents across ESFRS is an upward one.

	2009/10	2010/11	2011/12	2012/13	2013/14	2014/15	2015/16	2016/17	2017/18	Grand Total
Level 3 (7-9 pumps)	0	0	0	0	0	0	0	0	1	1
Level 4 (10+ pumps)	0	0	0	0	0	0	0	0	0	0
<b>Total</b>	<b>0</b>	<b>0</b>	<b>0</b>	<b>0</b>	<b>0</b>	<b>0</b>	<b>0</b>	<b>0</b>	<b>1</b>	<b>1</b>
<b>ESFRS Total</b>	<b>17</b>	<b>11</b>	<b>9</b>	<b>10</b>	<b>11</b>	<b>9</b>	<b>7</b>	<b>7</b>	<b>12</b>	<b>93</b>

The following map shows the predicted dwelling fatality rate by output area, produced by the Fire Service Emergency Cover Toolkit (FSEC). FSEC calculates the predicted risk of sustaining fatal injuries in a dwelling fire taking into account fire factors in census demographics, historical incident activity and response times. The map shows where the risk is higher and/or lower than the national average.

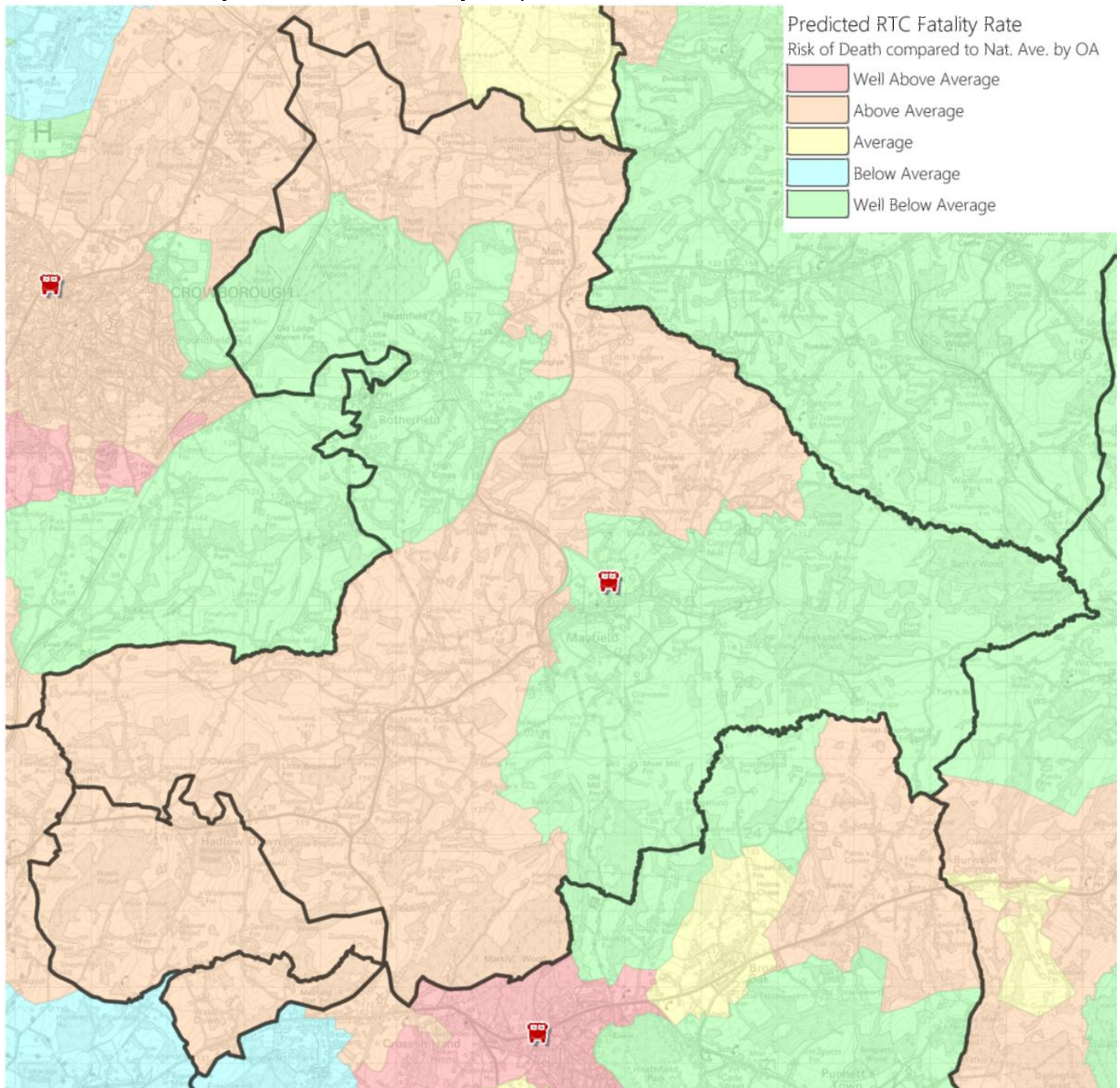
It can be seen that all of Mayfield station area is at a 'well below average' risk of sustaining fatal injuries in a fire compared with the national average, with the exception of one area in Five Ashes that is 'below average'.

### Predicted Dwelling Fire Fatality Rate (risk of death) by Output Area



The following map shows the predicted RTC fatality rate by output area, produced by the Fire Service Emergency Cover Toolkit. Areas through which the A267 and A272 run are described as an above average risk of death compared with the national average.

### Predicted RTC Fatality Rate (risk of death) by Output Area



### Incidents to which Mayfield appliance(s) were mobilised

Whilst the previous section dealt with incidents within Mayfield station area irrespective of which appliances were mobilised, this section deals with incidents to which Mayfield appliances have mobilised irrespective of the geographical location of the incident.

The table below shows the average turn-out times of each pumping appliance at Mayfield. Average turn-out times have been calculated using a trim mean. Any turn-out time quicker than 30 seconds or longer than 12 minutes were not used in the calculation. It can be seen that turnout times have increased over the 9 years, with 2017/18 being almost 1 minute slower than in 2009/10. The average turnout time across the 9 years is 06:26.

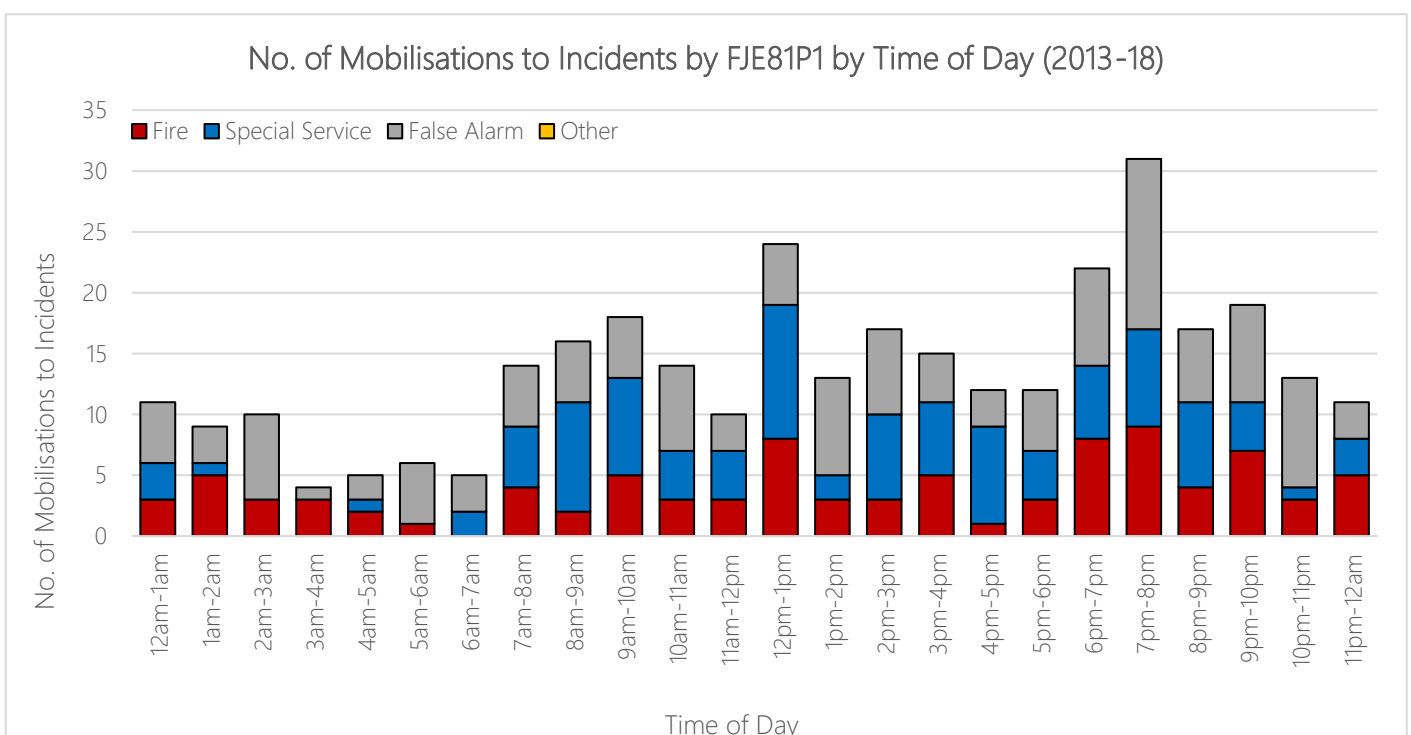
### Average turn-out times of Mayfield appliance(s)

Callsign	2009/10	2010/11	2011/12	2012/13	2013/14	2014/15	2015/16	2016/17	2017/18
FJE81P1	06:19	05:57	05:49	06:21	06:04	06:30	06:53	06:57	07:07

The following table shows the number of mobilisations each Mayfield appliance has mobilised to an incident. Over the past 9 years the number of incidents attended by ESFRS have reduced by 60% (ranking 7<sup>th</sup> out of the 33 pumping appliances with greatest reduction in mobilisations). Overall for ESFRS there has been a 24% decrease in mobilisations.

Appliance	2009/10	2010/11	2011/12	2012/13	2013/14	2014/15	2015/16	2016/17	2017/18	% increase / decrease
FJE81P1	109	83	66	89	109	65	63	47	44	-60
All ESFRS Incidents	12,759	11675	10376	9516	9772	9090	9215	9,405	9,737	-24

The chart below shows the incidents to which the Mayfield appliance(s) have mobilised to by time of day.



The following tables illustrate the types of incidents to which each Mayfield appliance has mobilised to over the past 5 years. FJE81P1 mobilises to proportionally 7% more fire incidents and 3.5% more special service incidents, meaning they mobilise to approximately 10% fewer false alarms.

### Mobilisations to Incidents by Appliance (Apr 2013 - Mar 2018)

Incident Type	FJE81P1	%	All ESFRS Incidents	%
Fire	93	28.4	10,263	21.7
Special Service	104	31.7	13,332	28.2
False Alarm	131	39.9	22,838	48.4
Other	0	0.0	786	1.7
<b>All Incident Types</b>	<b>328</b>	<b>-</b>	<b>47,219</b>	<b>-</b>

### Detailed Breakdown of Incident Types by Appliance (Apr 2013 - Mar 2018)

Incident Type	FJE81P1	%	All ESFRS Incidents	%
Primary Fire - Dwelling	37	11.3	2,871	6.1
Primary Fire - Non Residential	11	3.4	984	2.1
Primary Fire - Other Residential	5	1.5	265	0.6
Primary Fire - Other transport vehicle	0	0.0	14	0.0
Primary Fire - Outdoor	8	2.4	396	0.8
Primary Fire - Road Vehicle	7	2.1	1,256	2.7
Chimney Fire	11	3.4	717	1.5
Secondary Fire - Dwelling	0	0.0	25	0.1
Secondary Fire - Non Residential	0	0.0	64	0.1
Secondary Fire - Other Residential	0	0.0	0	0.0
Secondary Fire - Other transport vehicle	0	0.0	2	0.0
Secondary Fire - Outdoor	14	4.3	3,561	7.5
Secondary Fire - Road Vehicle	0	0.0	58	0.1
Fire - Classification Not Recorded	0	0.0	50	0.1
Special Service - Advice Only	0	0.0	150	0.3
Special Service - Animal assistance incidents	9	2.7	1,050	2.2
Special Service - Assist other agencies	4	1.2	767	1.6
Special Service - Effecting Entry/Exit	4	1.2	1,817	3.8
Special Service - Evacuation (no fire)	0	0.0	13	0.0
Special Service - Flooding	12	3.7	1,956	4.1
Special Service - Hazardous Materials	1	0.3	133	0.3
Special Service - Lift Release	1	0.3	1,728	3.7
Special Service - Making Safe (not RTC)	7	2.1	834	1.8
Special Service - Medical Incident	0	0.0	101	0.2
Special Service - No action (not false alarm)	3	0.9	325	0.7
Special Service - Other rescue/release of persons	5	1.5	447	0.9
Special Service - Other Transport	1	0.3	136	0.3
Special Service - Removal of objects from people	0	0.0	261	0.6
Special Service - Removal of people from objects	1	0.3	146	0.3
Special Service - Rescue or evacuation from water	0	0.0	43	0.1
Special Service - RTC	50	15.2	2,374	5.0
Special Service - Spills and Leaks (not RTC)	2	0.6	495	1.0
Special Service - Stand By	0	0.0	6	0.0
Special Service - Suicide	0	0.0	71	0.2
Special Service - Unknown	4	1.2	471	1.0
Special Service - Water provision	0	0.0	8	0.0
False Alarm - Apparatus	93	28.4	15,820	33.5
False Alarm - Good Intent	35	10.7	6,255	13.2
False Alarm - Malicious	0	0.0	601	1.3
False Alarm - Unknown	3	0.9	162	0.3
Other	0	0.0	786	1.7
<b>Total</b>	<b>328</b>	<b>-</b>	<b>47,219</b>	<b>-</b>



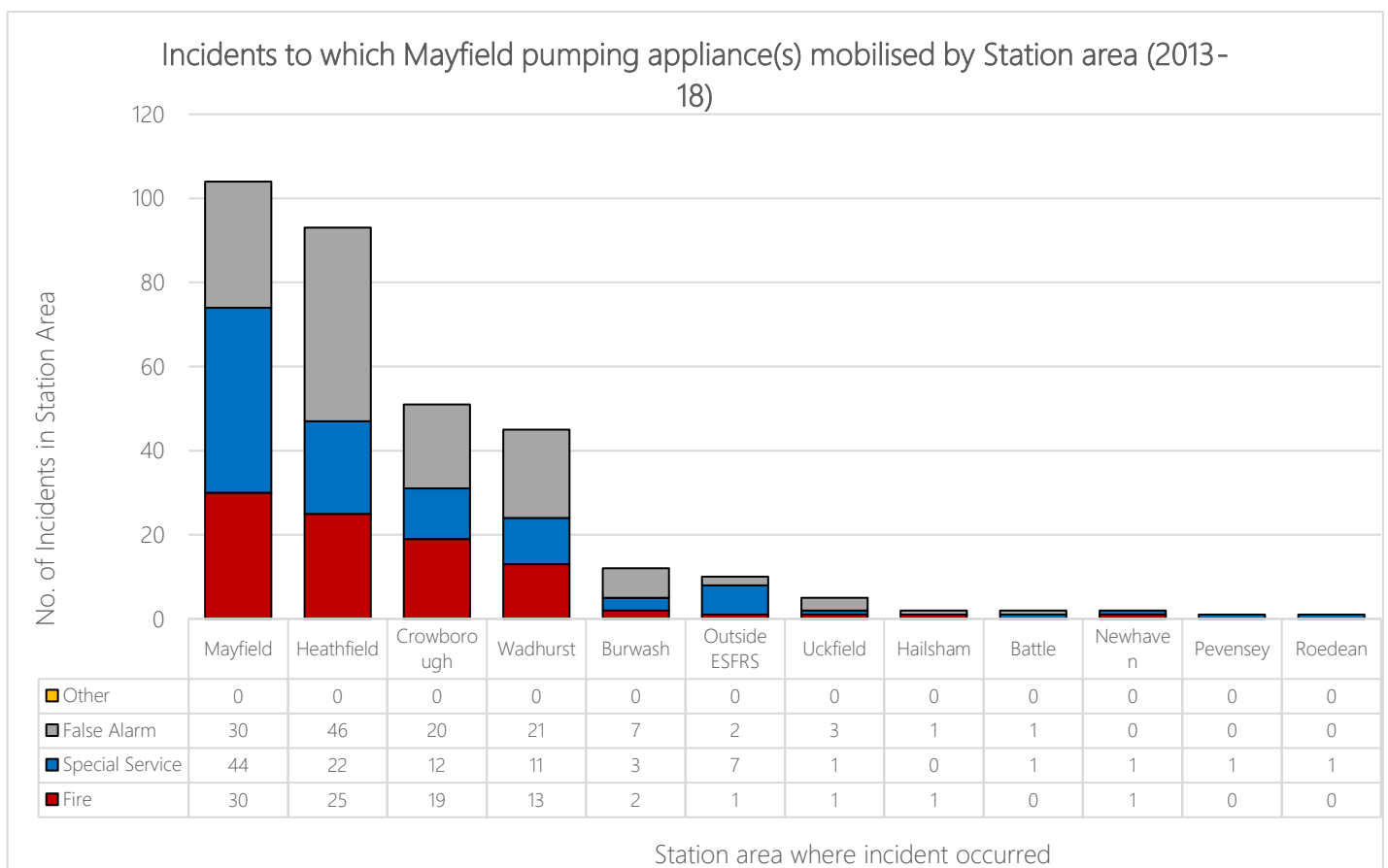
The following table demonstrates the number of times each pumping appliance at Mayfield has been mobilised to an incident between 2013 and 2018, broken down by the station area to which it was mobilised. This includes incidents where the Mayfield appliance(s) may not have arrived at the incident due to being stood-down en-route.

**No. of mobilisations to ALL incidents (Apr 2013- March 2018)**

No. of Mobilisations to Incidents	Appliance Callsign	Battle	Burwash	Crowborough	Hailsham	Heathfield	Mayfield	Newhaven	Pevensey	Roedean	Uckfield	Wadhurst	Outside ESFRS	Grand Total
5 Year Total (2013-18)	FJE81P1	2	12	51	2	93	104	2	1	1	5	45	10	328
Ave. Per Year	FJE81P1	0	2	10	0	19	21	0	0	0	1	9	2	66
% by Station Area	FJE81P1	0.6	3.7	15.5	0.6	28.4	31.7	0.6	0.3	0.3	1.5	13.7	3.0	100.0

It can be seen that the pumping appliance at Mayfield (81P1) is mobilised to an incident, on average, 66 times per year and on 31% of occasions, this is to its own station area. The next highest is Heathfield on 28% of occasions, then Crowborough 16% and Wadhurst on 14% of occasions. 3% of mobilisations were outside ESFRS.

Between April 2013 and March 2018 there have been 328 mobilisations to incidents by a Mayfield appliance, as shown in the graph below.



N.B. The overborder figure will likely be higher as these figures are calculated from data held within ESFRS Incident Recording System only. For over-border incidents where both Mayfield and an over-border FRS attend, the incident is recorded in the over-border FRS's Incident Recording System.

The following table demonstrates the number of times each pumping appliance at Mayfield has been mobilised to a critical incident between 2013 and 2018, broken down by the station area to which it was mobilised. This includes incidents where the Mayfield appliance(s) may not have arrived at the incident due to being stood-down en-route. 81P1 mobilises to a critical incident, on average, 8 times per year and on 30% of occasions, this is within the Mayfield station area. Also on 30% is Heathfield, then Crowborough on 22%. There were no OTB critical incidents mobilised to.

No. of mobilisations to **CRITICAL** incidents (Apr 2013 – Mar 2018)

No. of Mobilisations to Critical Incidents	Appliance Callsign	Burwash	Crowborough	Heathfield	Mayfield	Wadhurst	Grand Total
5 Year Total (2013-18)	FJE81P1	3	8	11	11	4	37
Ave. Per Year	FJE81P1	1	2	2	2	1	7
% by Station Area	FJE81P1	8.1	21.6	29.7	29.7	10.8	100.0

The table(s) below show the performance over 5 years of each pumping appliance when it is the first arriving appliance at an incident. Attendance times are calculated from time of call to time of arrival of the first fire appliance. Given that our attendance standards for the first-arriving fire appliance are:

- On-station response: 10 minutes 70% of occasions
- On-call response: 15 minutes 70% of occasions

It can be seen that over the last 5 years, FJE81P1 hasn't met this standard, reaching 55% of all incidents within 15 minutes, but it does meet the standard for critical incidents with 88% within 15 minutes.

Incidents attended within X minutes by **FJE81P1** where first-arriving appliance (Apr 2013 – Mar 2018)

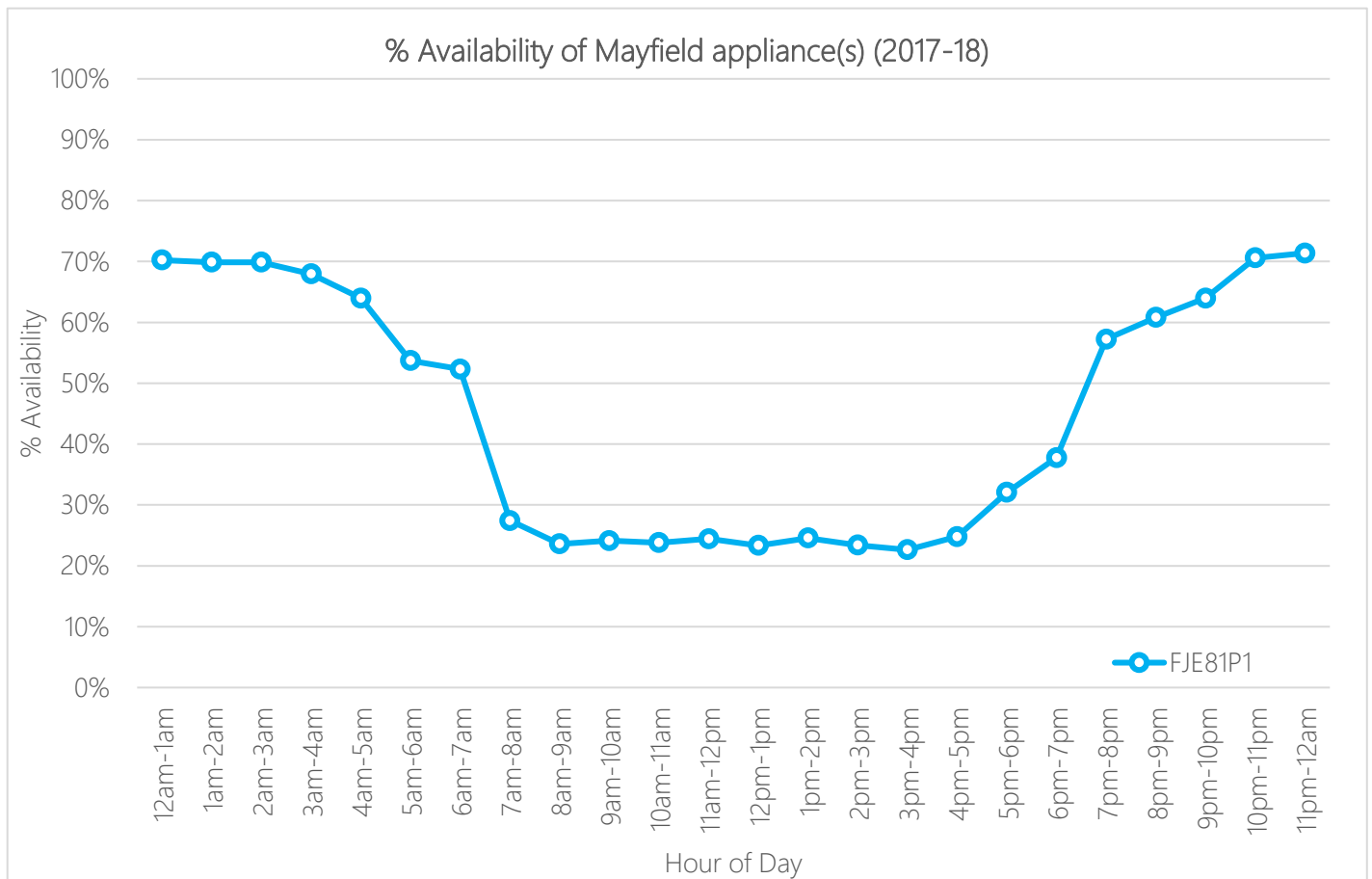
Performance of FJE81P1 as first arriving appliance	< 5 mins	< 8 mins	< 10 mins	< 13 mins	< 15 mins	< 20 mins	Total Incidents
All Incidents	16 (12%)	21 (15%)	33 (24%)	64 (46%)	76 (55%)	110 (80%)	138
Critical Incidents	0 (%)	2 (25%)	4 (50%)	6 (75%)	7 (88%)	8 (100%)	8

The table below shows appliance availability between April 2009 and March 2018. The data is calculated on unavailability due to staffing and does not include when appliances are off-the-run due to mechanical issues. It can be seen that availability had been improving, with a peak of 75% in 2013/14, however it dropped to 45% in 2016/17 and 2017/18 – the lowest of the 9 years.

### Appliance Availability

Callsign	2009/10	2010/11	2011/12	2012/13	2013/14	2014/15	2015/16	2016/17	2017/18
FJE81P1	53.7	57.5	56.8	69.8	74.9	63.8	55.6	45.2	45.2

The chart below shows the percentage availability of the appliance(s) at Mayfield for each hour of the day during the most recent year (2017/18). It can be seen that availability of FJE81P1 dips significantly between 8am and 5pm where it is available, on average, 24% of the time, before rising again to a maximum of 70% availability between 10pm and 4am.



### OTB attendances into Mayfield (where ESFRS did not attend)

Kent FRS attended 5 incidents in Mayfield station area, where ESFRS did not attend, from 2009-2018. This information is stored in Kent's IRS system. This means that for all the incidents in Mayfield from 2009-2018, Kent FRS solely attended 1%.

FRS Attending	2009-10	2010-11	2011-12	2012-13	2013-14	2014-15	2015-16	2016-17	2017-18	Total
Kent into Mayfield Area	1	0	0	0	0	0	1	3	0	5
Total OTB FRS into ESFRS	64	57	73	83	84	53	66	60	77	617

### Standby cover moves

The following section provides details of standby moves between April 2009 and March 2018. Please note, the figures do not represent actual incidents where we have attended (e.g. standby no action). Rather, the figures below constitute the non-emergency cover moves that are made as part of SCC fire cover and policy decisions.

Mayfield appliances made 196 standby moves between April 2009 and March 2018, accounting for 2.3% of all standby moves for ESFRS. Overall the number of standby moves completed by Mayfield has remained fairly static, with an average of 22 moves per year

Standbys (% Service Wide Within Year)										
	2009 /10	2010 /11	2011 /12	2012 /13	2013 /14	2014 /15	2015 /16	2016 /17	2017 /18	Grand Total
Mayfield	21 (2.7%)	12 (1.5%)	15 (1.7%)	28 (3%)	29 (2.9%)	13 (1.6%)	29 (2.7%)	24 (1.5%)	25 (1.1%)	196 (1.9%)
ESFRS Total	773	795	877	947	1,010	835	1,086	1,556	2,301	10,180

Half (51%) of Mayfield's standbys were in Uckfield, 100 standby moves accounting for 14% of all the standbys in Uckfield. Mayfield also stood by 73 times in Crowborough, accounting for 12% of all the standbys there. Mayfield have also been required to stand by at Battle on 10 occasions, and completed two cover moves into Kent FRS – in Tunbridge Wells.

Standby Locations (% Within Area / Appliance)		
Standby Location	81P1	Total Standbys at Location
Uckfield	100 (51%)	730
Crowborough	73 (37.2%)	598
Battle	10 (5.1%)	659
Newhaven	2 (1%)	507
Eastbourne	2 (1%)	669
Tunbridge Wells	2 (1%)	21
Preston Circus	1 (0.5%)	371
Hailsham	1 (0.5%)	10
Rye	1 (0.5%)	258
Mayfield	1 (0.5%)	1
Broad Oak	1 (0.5%)	7
Hastings Ridge	1 (0.5%)	1245
Lewes	1 (0.5%)	1142
Total	196	-

### Special Appliances

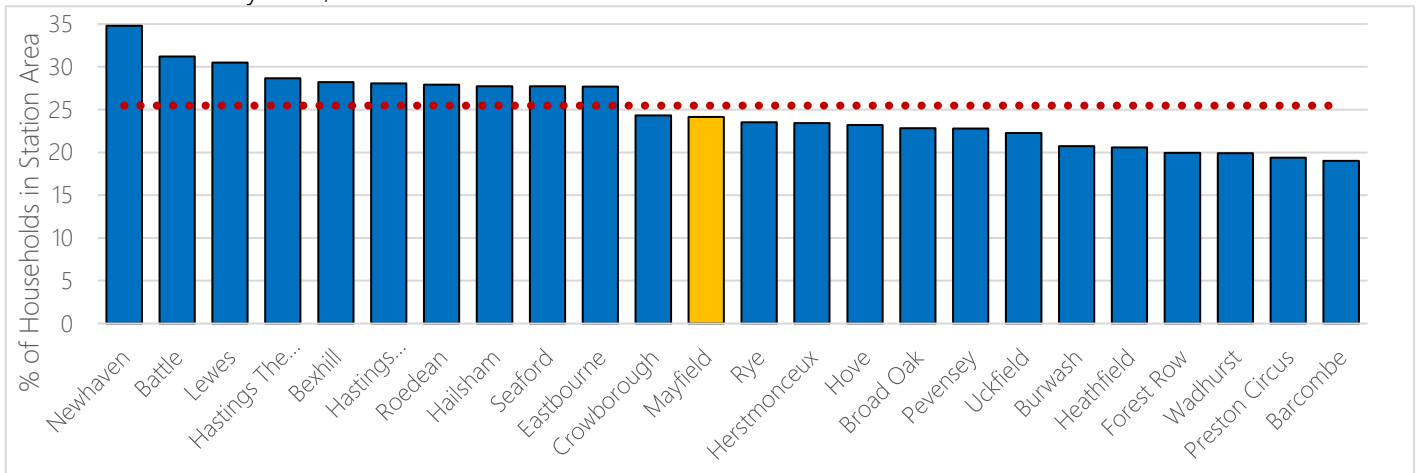
There are no special appliances based at Mayfield fire station.



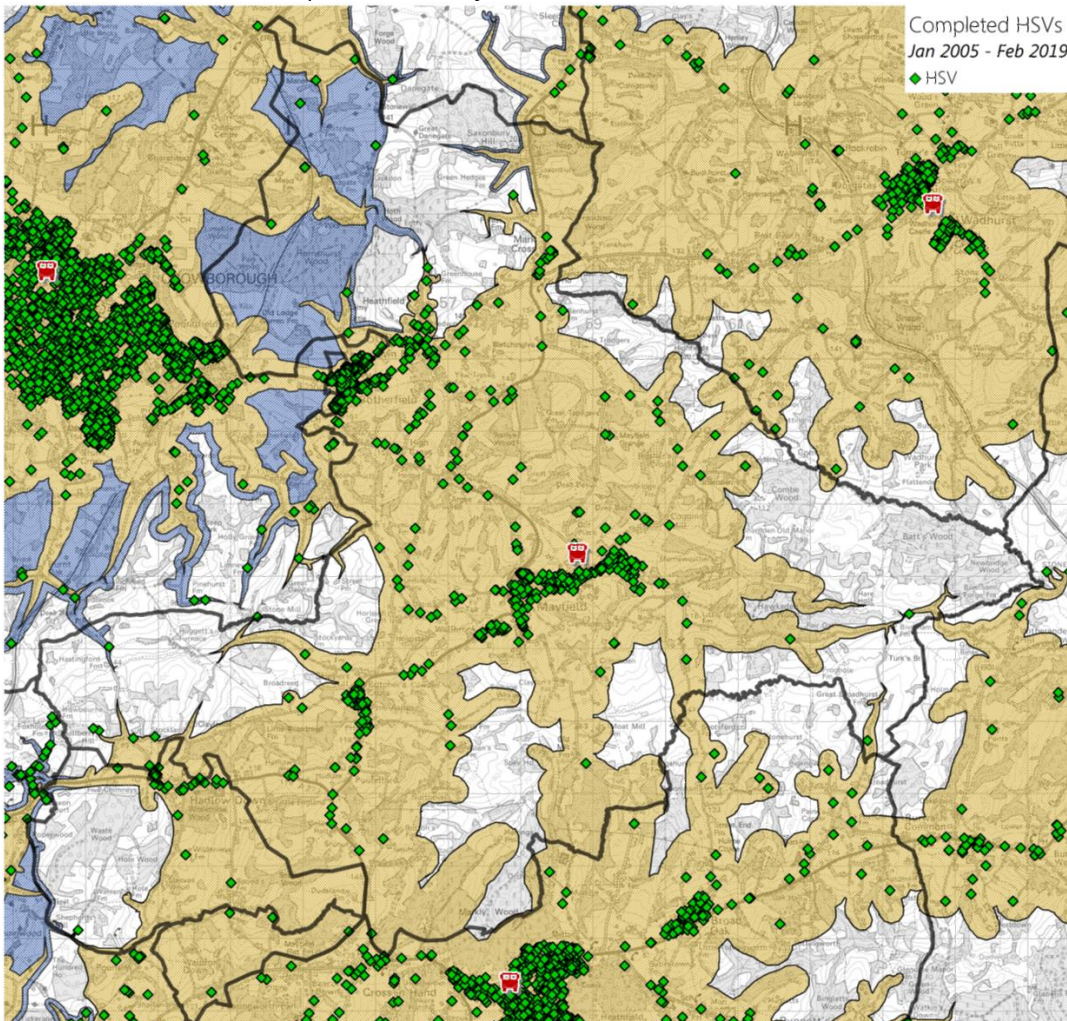
# Prevention – Home Fire Safety

Between January 2005 and February 2019, a total of 591 HSVs have been undertaken within Mayfield Station Admin area. These figures includes re-visits to the same property over the years. This equates to 216 unique households which have had a Home Safety Visit.

Over the last five years (Apr 2013 – Mar 2018), an average of 66 HSVs were undertaken each year – making up approximately 0.7% of all HSVs undertaken across the ESFRS area. 1% of HSVs undertaken in Mayfield station area sit outside the attendance standards isochrone. This is somewhat in line with the proportion of households that fall outside of the isochrone (2%). 24.7% of all households in Mayfield station area have had a Home Safety Visit; similar to the ESFRS total of 25.5%.



Total No. of HSVs completed in Mayfield Station Area (Jan 2005 – Feb 2019)

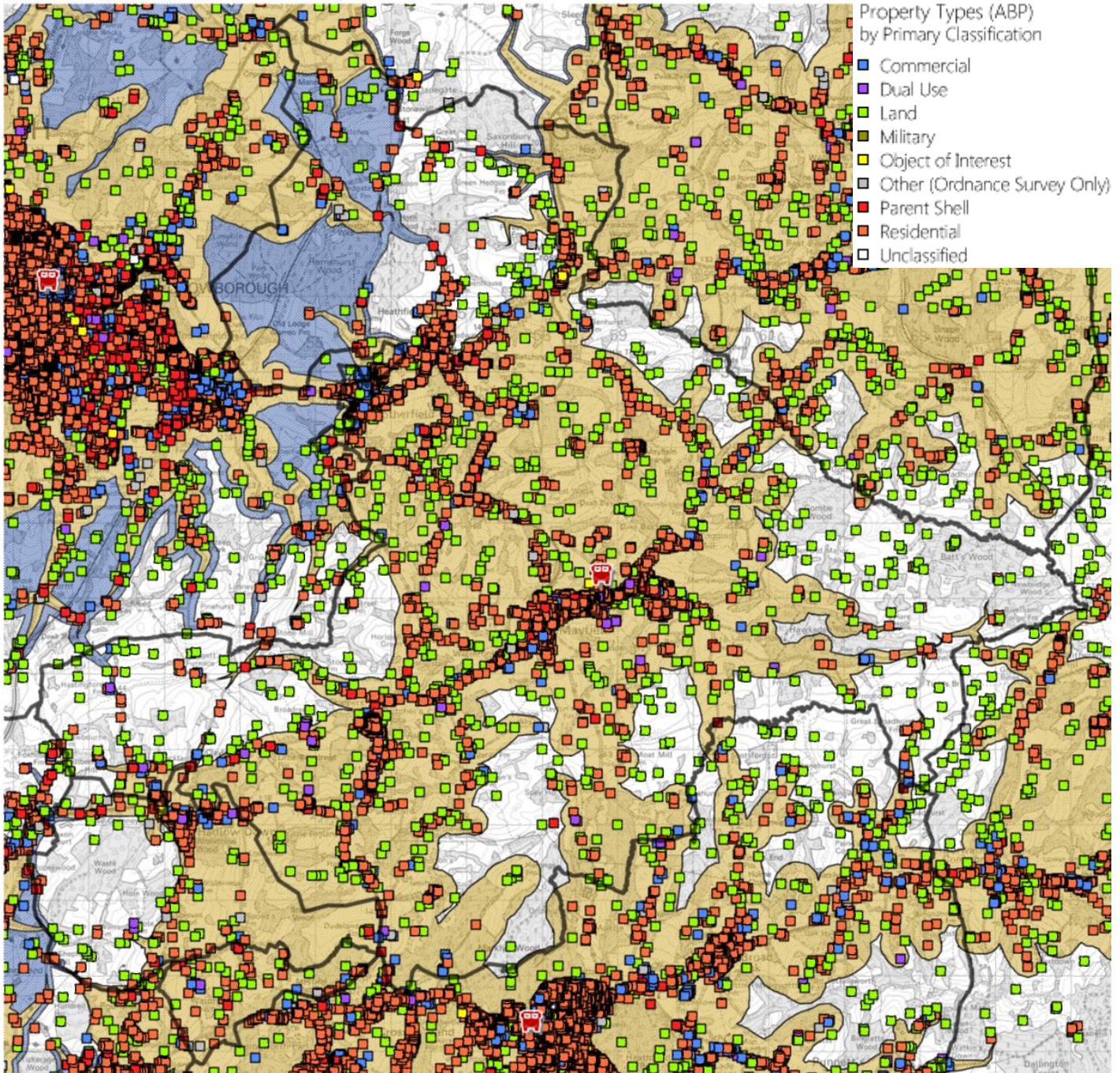




## Protection – Business Safety

The map below shows all addressable objects, as found in AddressBase Premium (ABP). AddressBase Premium is the most current, comprehensive and accurate geographic dataset available of addresses, properties and land areas where services are provided. Properties that have been demolished and those yet to be built have been excluded from this dataset. Using ABP, allows us to identify all commercial properties, based on the primary classification of the property.

All Property Types by Primary Classification (AddressBase Premium Epoch 62)



Station Admin Area	Total No. of Commercial Properties	Within Attendance Standard (Day)	%	Within Attendance Standard (Night)	%
Mayfield	333	317	95.2	318	95.5

BLPU State: In use, Unoccupied, Unknown or Not Applicable, Logical Status: Approved, Primary Classification: Commercial, Distinct UPRN: Yes

16 (5%) commercial properties were found to be outside of the attendance standards isochrones, these are mostly commercial entities located on farms, including holiday lets, offices and equestrian schools.

Property Types with higher societal life risk (FSEC A through G).

Hospital	Care Home	Hostel	Hotel
0	2	0	0

Based on ABP Epoch 62 Classification.

HMOs, Purpose-Built Flats and Houses Converted to flats are not shown here as not all are classified in this way in ABP

The following tables illustrate the total number of Business Safety Audits that have been undertaken across Mayfield Station area. An average of 2 Business Safety Audits are completed per year, which makes up approximately 0.4% of audits undertaken by ESFRS each year. 43% of audits were for 'Other sleeping accommodation', 18% for care homes, 14% for Hotels and 11% for schools.

**Business Safety Audits by Property Type (% within area)**

All audits in CRM up to 04/2019 (Excludes 'In Progress')

Property Type	Mayfield	ESFRS
A - Hospitals & Prisons	0 (0%)	180 (2.4%)
B - Care Home	8 (18.2%)	1,595 (21.4%)
D - Purpose Built Flats > 3 Stories	3 (6.8%)	398 (5.4%)
E - Hostel	0 (0%)	139 (1.9%)
F - Hotel	6 (13.6%)	1,379 (18.5%)
G - House Converted to Flats	0 (0%)	240 (3.2%)
H - Other Sleeping Accom.	19 (43.2%)	1,009 (13.6%)
J - Further Education	0 (0%)	31 (0.4%)
K - Public Building	1 (2.3%)	25 (0.3%)
L - Licensed Premises	0 (0%)	890 (12%)
M - School	5 (11.4%)	148 (2%)
N - Shop	0 (0%)	562 (7.6%)
P - Other Public Premises	2 (4.5%)	231 (3.1%)
R - Factory/Warehouse	0 (0%)	147 (2%)
S - Office	0 (0%)	216 (2.9%)
T - Other Workplace	0 (0%)	87 (1.2%)
W - Land & Sea	0 (0%)	16 (0.2%)
Z - Single Private Dwelling	0 (0%)	143 (1.9%)
<b>Total</b>	<b>44</b>	<b>7,436</b>

**Business Safety Audits by Year**

Station Area	2013/14	2014/15	2015/16	2016/17	2017/18	Total	Ave. per Yr	%
Mayfield	2	2	6	0	0	10	2	0.4



# Developments

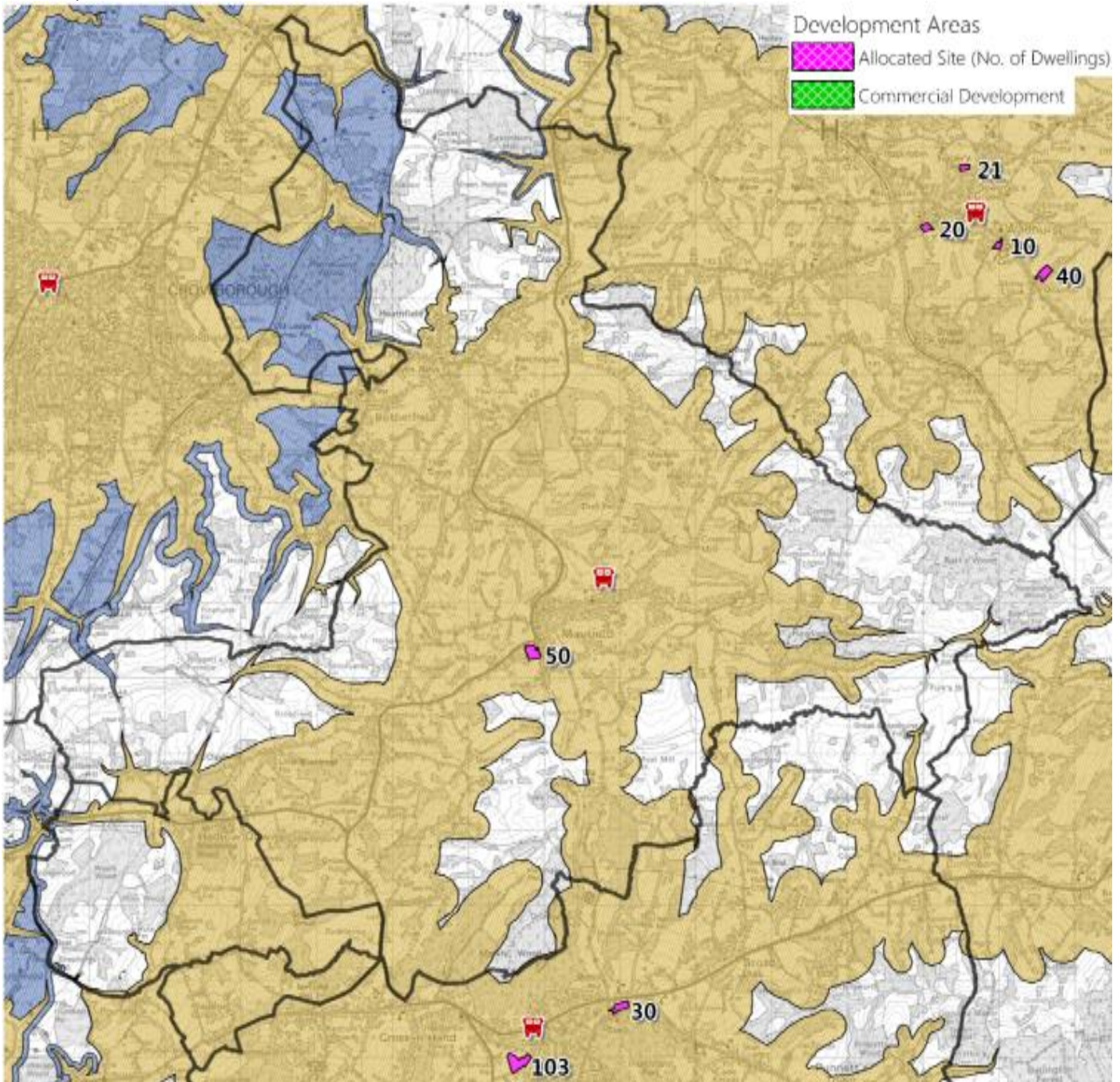
## Residential

Details of residential development site allocations have been provided from the local planning office and are shown on the map below. There is one residential site within Mayfield station area, with an allocation of 50 dwellings. This development falls within the attendance standards isochrone.

## Commercial

There are no major commercial developments within Mayfield station area.

### Development areas – allocated sites







## Road Risk

All UK roads (excluding motorways) fall into the following four categories:

- **A roads** – major roads intended to provide large-scale transport links within or between areas.
- **B roads** – roads intended to connect different areas, and to feed traffic between A roads and smaller roads on the network.
- **Classified unnumbered** – smaller roads intended to connect together unclassified roads with A and B roads, and often linking a housing estate or a village to the rest of the network. Similar to ‘minor roads’ on an Ordnance Survey map and sometimes known unofficially as C roads.
- **Unclassified** – local roads intended for local traffic. The vast majority (60%) of roads in the UK fall within this category.

The following table shows the total length of Road within Mayfield Station area, broken down by Road type. There is approximately 158km of Road within Mayfield station area, there are proportionally 10% more classified roads but 9% fewer unclassified roads. There are similar proportions of A and B roads to the ESFRS average.

Road Type	Mayfield	ESFRS
A Road	16km (10%)	521km (10%)
B Road	8km (5%)	302km (6%)
Classified Unnumbered	38km (24%)	759km (14%)
<b>Total Classified Roads</b>	<b>61km (39%)</b>	<b>3,779km (30%)</b>
Not Classified/Unclassified	97km (61%)	1,582km (70%)
<b>Total All Road Types</b>	<b>158km (100%)</b>	<b>5,361km (100%)</b>

ESFRS only attends around 25% of all road traffic collisions on ESFRS roads. Therefore, data from the Sussex Safer Road Partnership (SSRP) was sourced to understand the fuller picture of road (RTC) risk.

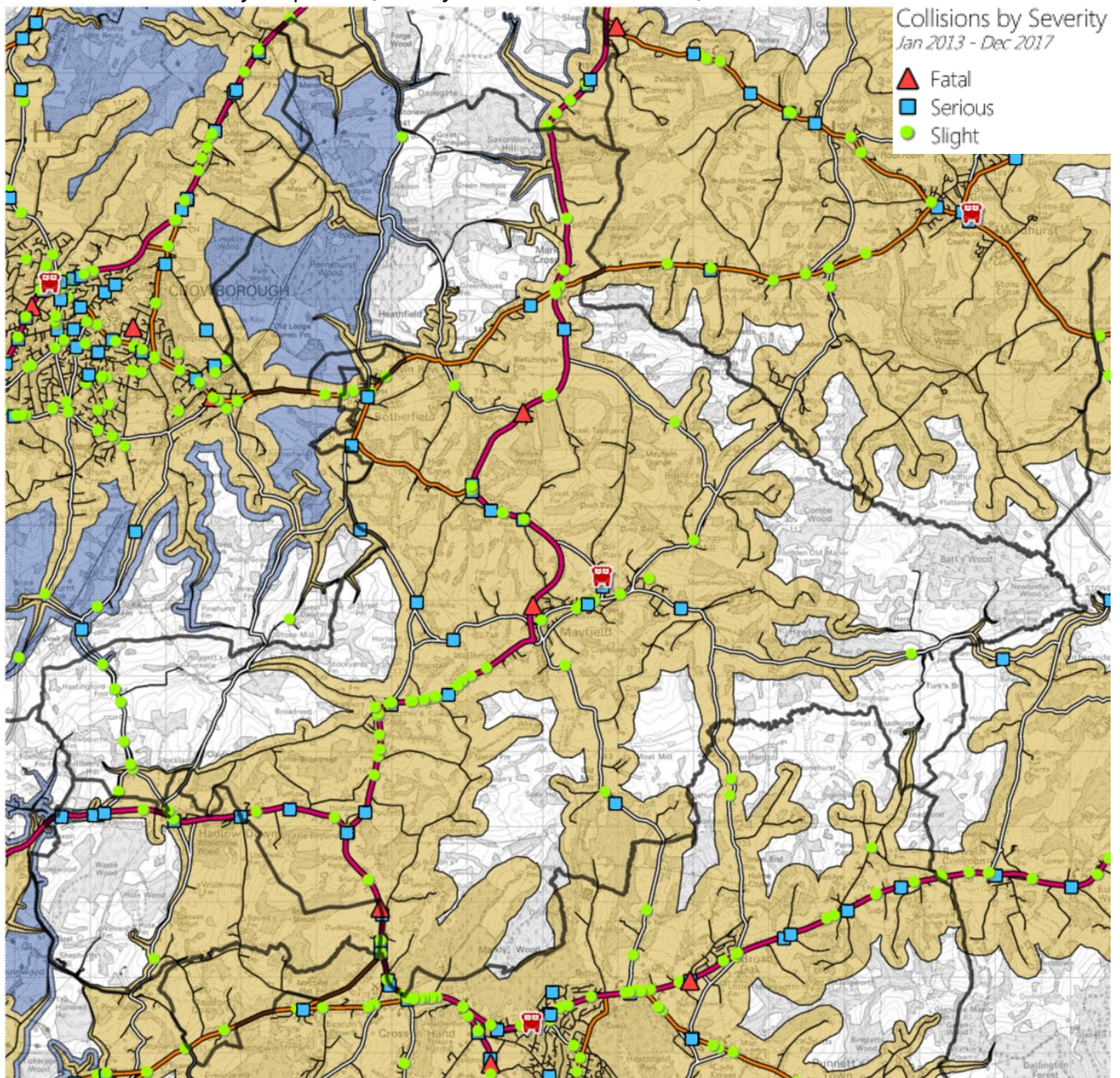
The following table breaks down the severity of collisions recorded by the SSRP. There are, on average, 23 KSI collisions per year in Mayfield station area. 26.5% of collisions result in serious or fatal injuries and this proportion is 4.4% higher than ESFRS overall.

Collision Severity	Mayfield	ESFRS
Fatal	3 (2.6%)	112 (1.1%)
Serious	28 (23.9%)	2,235 (21%)
Slight	86 (73.5%)	8,307 (78%)
<b>Total</b>	<b>117</b>	<b>10,654</b>
<b>Ave. per Year</b>	<b>23</b>	<b>2,131</b>

Out of the 117 collisions, there were 2 slight that sit outside of the attendance standards isochrones, all fatal and serious are within the isochrones. The SSRP data did not contain the time of the collision..

The following map shows RTCs in Mayfield station area over a five year period (January 2013 – December 2017), broken down by severity.

### KSI Collisions over five year period (January 2013 – December 2017)



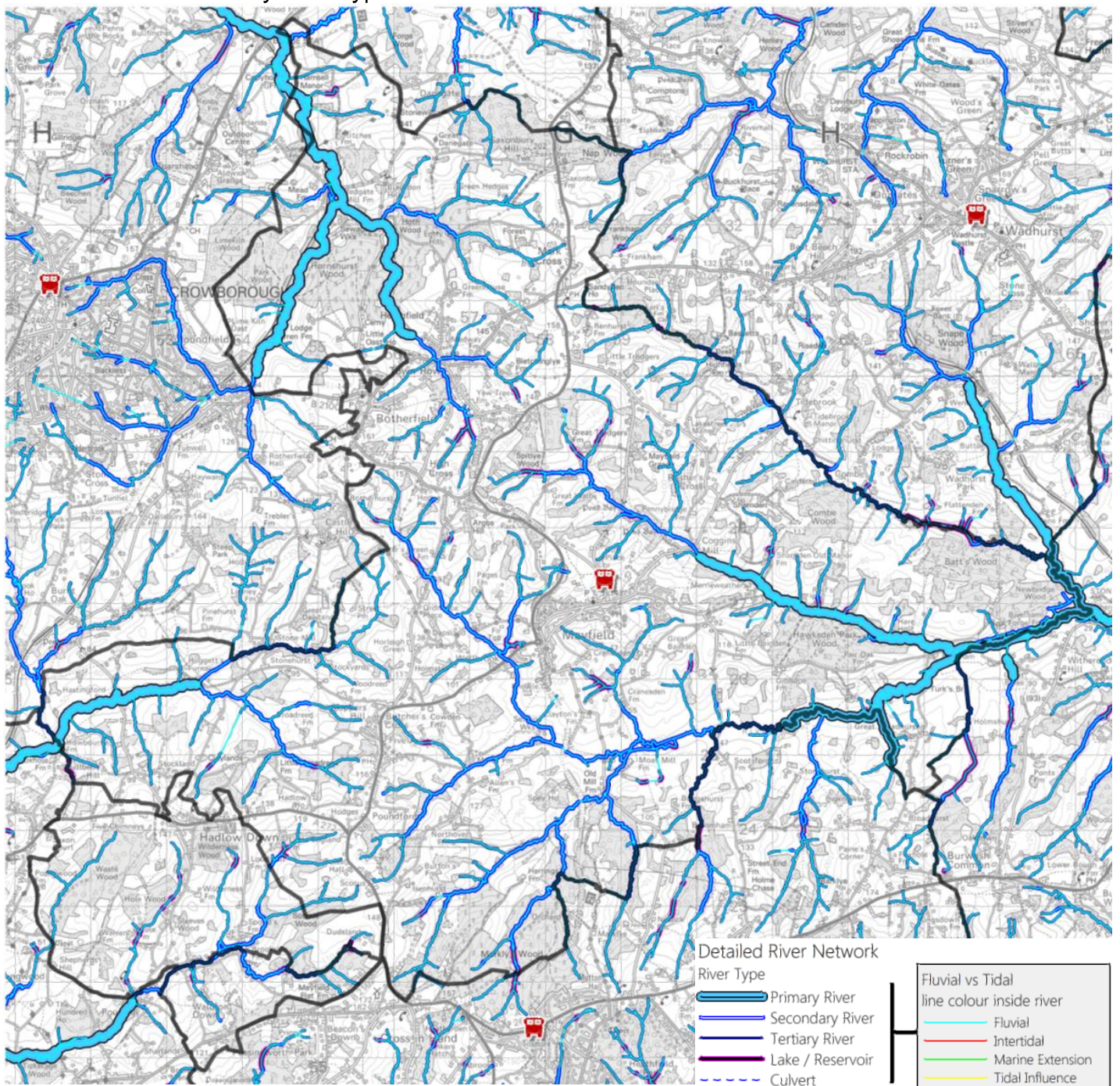


# Water Risk

The following map shows the Detailed River Network (DRN), which is a large-scale, accurate and fully attributed digital river centreline covering England and Wales. The DRN is captured from the water features theme of the OS MasterMap topographic layer and built into a network using automated rules. Other input datasets and extensive local Environment Agency (EA) staff knowledge has been used to augment the core geometry to incorporate critical spatial detail and attribution, such as flow direction and path, not available from the OS mapping and to verify the accuracy of the centreline itself.

Primary Rivers are usually larger rivers and streams; the secondary and tertiary rivers are 'ordinary watercourses'. The EA carries out maintenance, improvement or construction work on Main Rivers to manage flood risk. Lead local flood authorities, district councils and internal drainage boards carry out flood risk management work on ordinary watercourses.

## Detailed River Network by River Type



The table below shows the total length of rivers by type and whether the river is fluvial or tidal.

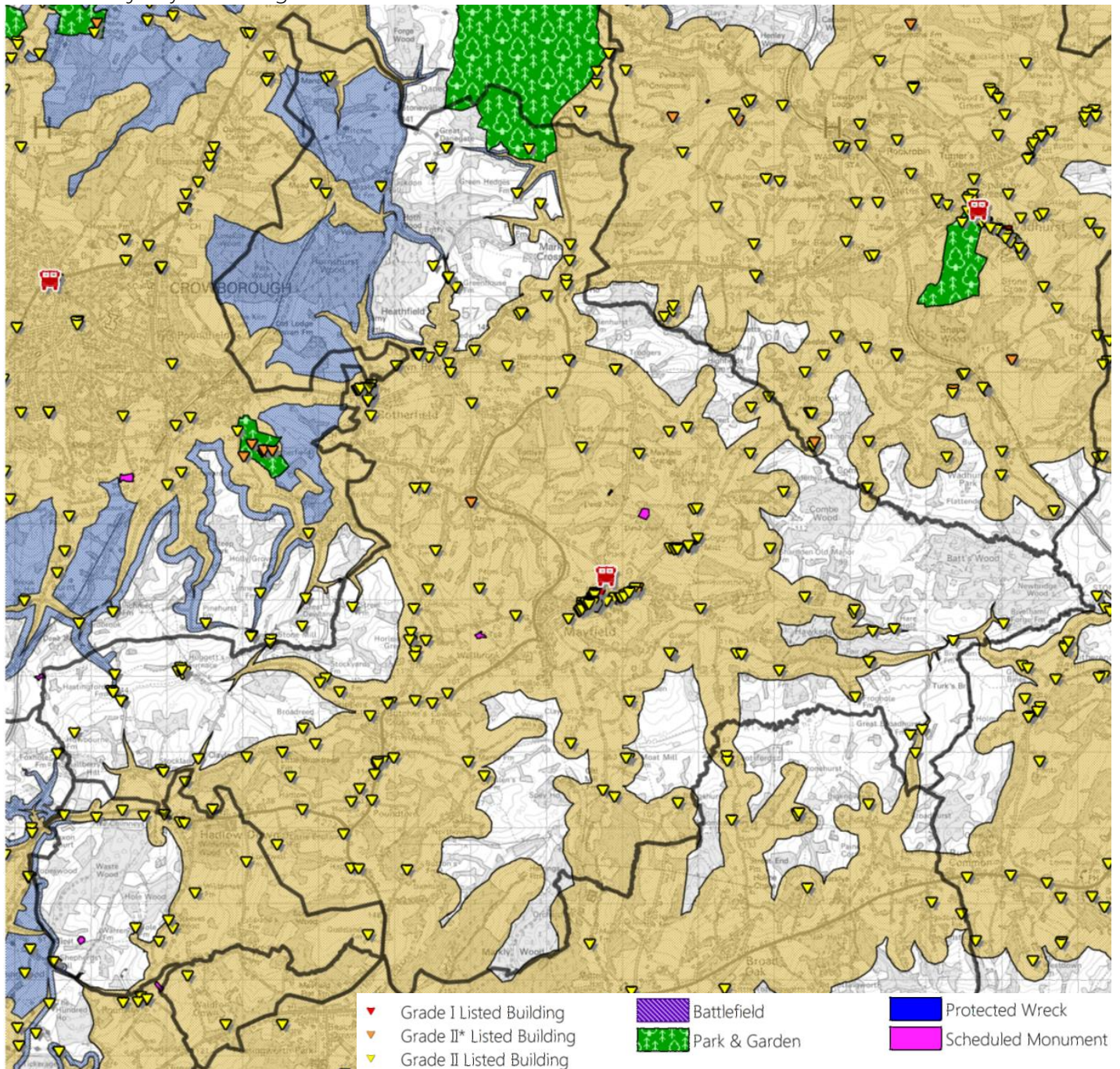
It can be seen that there are 169km of rivers within the Mayfield station area, which makes up approximately 4.3% of all rivers across the ESFRs area. This ranks Mayfield station area as 13<sup>th</sup> out of the 24 station areas for the total KM of rivers within the station area.

Mayfield has proportionally fewer primary and secondary rivers compared to the rest of the service, and have proportionally more tertiary rivers than the ESFRS average (59% in Mayfield, compared to 49% for ESFRS).

River Type	Fluvial vs Tidal	Mayfield River Length (km)	%	ESFRS River Length	%
Primary River	Fluvial	16.29	9.7	613.07	15.6
Primary River	Intertidal	0.00	0.0	2.02	0.1
Primary River	Marine Extension	0.00	0.0	6.25	0.2
Primary River	Tidal Influence	0.00	0.0	41.19	1.0
<i>Total Primary</i>		<i>16.29</i>	<i>9.7</i>	<i>662.53</i>	<i>16.9</i>
Secondary River	Fluvial	43.13	25.6	1,129.06	28.8
Secondary River	Intertidal	0.00	0.0	0.58	0.0
Secondary River	Tidal Influence	0.00	0.0	0.97	0.0
<i>Total Secondary</i>		<i>43.13</i>	<i>25.6</i>	<i>1,130.62</i>	<i>28.8</i>
Tertiary River	Fluvial	100.06	59.3	1,899.39	48.4
Tertiary River	Intertidal	0.00	0.0	2.37	0.1
Tertiary River	Marine Extension	0.00	0.0	6.22	0.2
Tertiary River	Tidal Influence	0.00	0.0	0.24	0.0
<i>Total Tertiary</i>		<i>100.06</i>	<i>59.3</i>	<i>1,908.22</i>	<i>48.6</i>
Lake / Reservoir	Fluvial	5.60	3.3	111.25	2.8
Culvert	Fluvial	3.64	2.2	111.24	2.8
<i>Total Fluvial</i>		<i>168.73</i>	<i>100.0</i>	<i>3,864.01</i>	<i>98.5</i>
<i>Total Intertidal</i>		<i>0.00</i>	<i>0.0</i>	<i>4.97</i>	<i>0.1</i>
<i>Total Marine Extension</i>		<i>0.00</i>	<i>0.0</i>	<i>12.47</i>	<i>0.3</i>
<i>Total Tidal Influence</i>		<i>0.00</i>	<i>0.0</i>	<i>42.40</i>	<i>1.1</i>
<b>Grand Total</b>		<b>169</b>	<b>100</b>	<b>3,923.85</b>	<b>100</b>

## Heritage Risk

The following map shows the location of different types of heritage risk dispersed across the station area. The vast majority of heritage risk is within the attendance standards isochrones.



Grade	# in Area	Within Attendance Standard (Day)	%	Within Attendance Standard (Night)	%
I	4	4	100.0	4	100.0
II*	4	4	100.0	4	100.0
II	256	236	92.2	238	93.0
<b>Total</b>	<b>264</b>	<b>244</b>	<b>92.4</b>	<b>246</b>	<b>93.2</b>

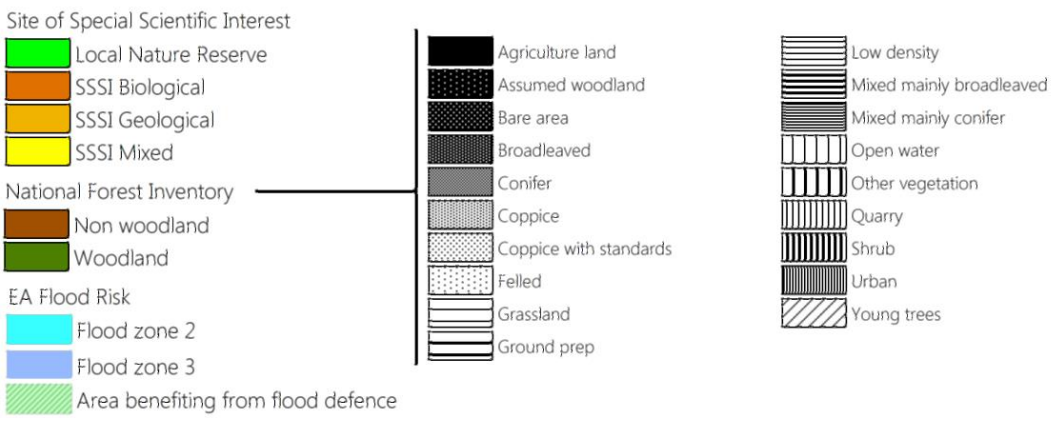
There are 20 grade II listed buildings outside of the attendance standards isochrone, these are mostly located in the west and north of the station area.



# Environmental Risk

The following map shows a breakdown of various environmental risks across Mayfield station area. There are, on average, 2 incidents per year in Mayfield station area classified as "special service – flooding". This equates to 4.7% of all incidents in Mayfield and is slightly higher than the ESFRS proportion of 4.2% per year. There are 2 Sites of Special Scientific Interest (SSSIs) in Mayfield station area, Hastingford Cutting just sits within the nighttime isochrone, and Stockland Farm Meadows just sits outside the isochrones.

*Flood Zone 2 represents land that has been assessed as having between a 1%-0.1% annual probability of river flooding, or between 0.5%-0.1% annual probability of sea flooding in any year. Flood Zone 3 represents land that has been assessed as having a >1% annual probability of river flooding, or a >0.5% annual probability of sea flooding in any year.*



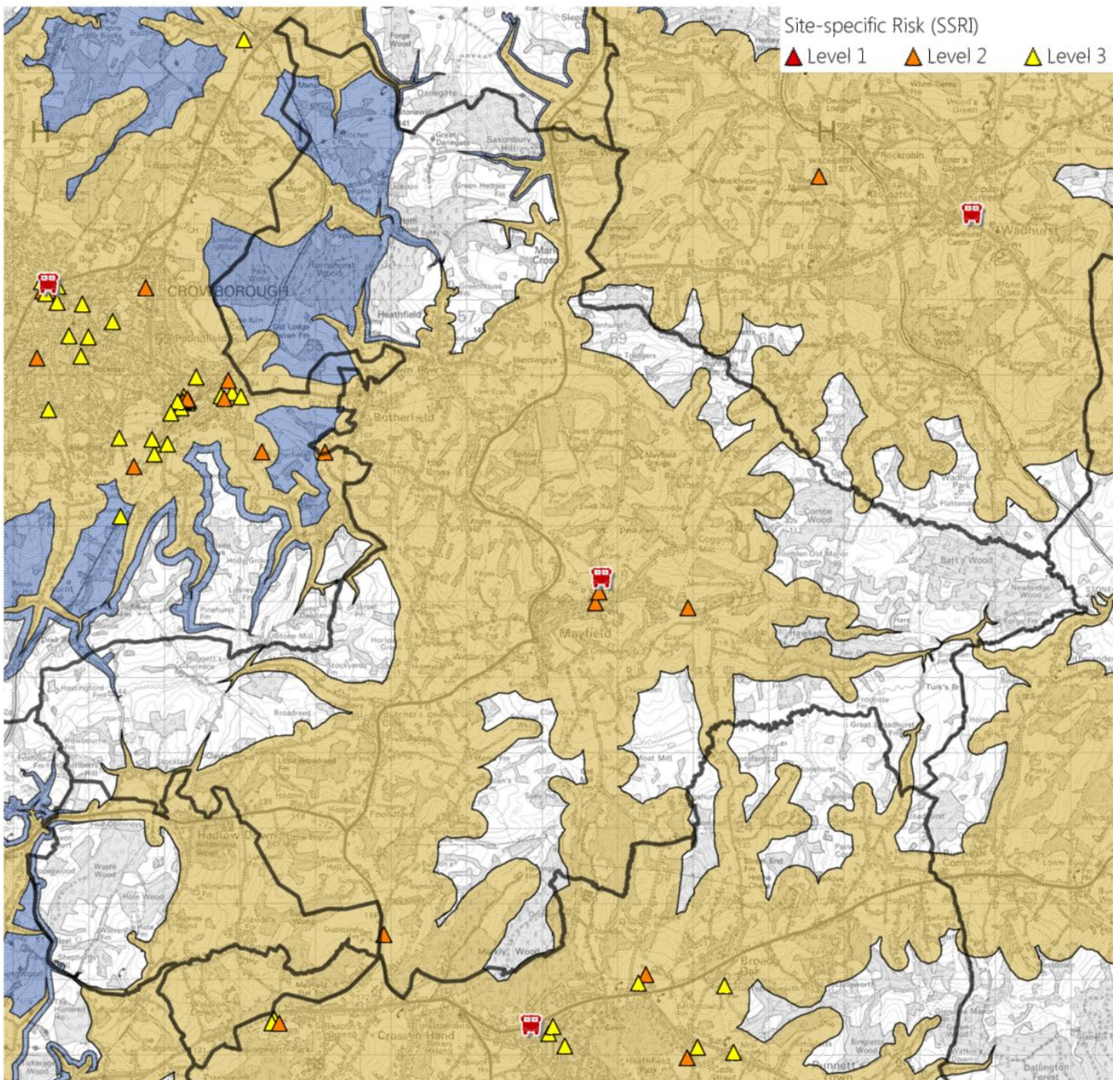
## Special Risk (Operational Risk)

### Site-Specific Risk Information (SSRI)

There are a total of 4 Level 2 SSRI (No Level 1 or 3) within the Mayfield Station Admin area, all of which fall within the attendance standard isochrones.

SSRI Risk	Mayfield	ESFRS
Level 1	0 (0.0%)	25 (3.1%)
Level 2	4 (100.0%)	294 (36.3%)
Level 3	0 (0.0%)	461 (56.9%)
<b>Total</b>	<b>5</b>	<b>810</b>

The map below shows the location of these SSRIs. 3 are located in Mayfield village itself and the other is on the border with Crowborough station area.



### High-Rise Risk

There are no high rise premises in Mayfield station area (properties  $\geq 6$  floors)

### Special Risk

There are no COMAH sites located in Mayfield station area. However, there is a lower-tier COMAH site (Rose Gas Ltd) located along the south border within Heathfield station area.

### Over border risks

Station area does not intersect other FRS boundary





