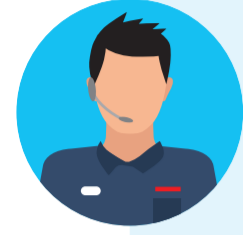


## Operational Support & Resilience



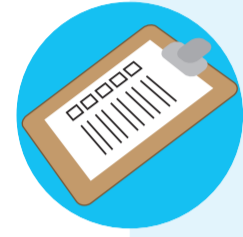
### Engineering Services

- Purchase, maintain and repair vehicles
- Purchase, maintain and repair operational equipment
- Asset management
- Evaluation and strategic development of fleet and equipment



### Sussex Control Centre

- 999 call handling
- Mobilising appliances and other resources
- Providing incident support
- Managing resources across East and West Sussex



### Operational Planning & Policy

- Operational policy and procedures
- Operational and risk information
- Hydrants & water supplies
- Resource management and logistics
- Specialist operations and national resilience
- Emergency Planning & Business Continuity



### Special Projects

- Emergency Services Mobile Communications Programme
- Sussex Control Centre

## Resources/Treasurer



### Finance

- Budget planning and reporting
- Medium Term Financial Planning
- Capital programme monitoring
- Financial policy and controls
- Financial Administration including income, payments & p-cards
- Risk, Insurance and Security Compliance



### Procurement

- Purchasing goods and services
- Procurement support and advice
- Monitoring and ensuring legal compliance
- Contract management and controls
- Insurance
- Benchmarking and supply market information
- Developing sourcing strategies



### Information & Technology Governance

- IT Strategy
- Business relationship management, business analysis and business case development
- IT Solution development/delivery
- IT project governance/support
- IT Procurement, Contracts & Supplier Management



### Estates

- Property management including repairs and maintenance
- Capital Schemes including major projects
- Estates Strategy

## Safer Communities



### Boroughs

- Responding to emergencies
- Community safety initiatives
- Community engagement
- 24 community fire stations
- Technical Rescue
- Large Animal Rescue
- Rope Rescue
- Swift Water Rescue



### Business Safety

- Fire safety/petroleum regulation
- Business engagement
- Fire investigations



### Community Safety

- Promoting safer communities
- Home safety and Safe and Well visits
- School and community engagement



## Principal Officers

& Executive Support

## Training & Assurance



### Command & Operational Training

- Operational training
- Incident Command
- Operational Improvement and Incident Feedback
- Commercial training



### Health, Safety & Well-being

- Improving standards of health and safety
- Policies, procedures and safety management systems
- Management and investigation of accidents
- Developing strategies to continue to look after employee health, safety and well-being



### Workforce Development

- Supporting staff development
- Building leadership capacity
- Station based training
- iLearn
- Competency framework support and advice

## Planning & Improvement



### Performance Management

- Data analysis
- Reporting
- Business planning



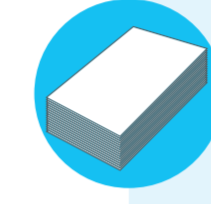
### Community Risk Management

- Data analysis
- Community Profiling
- Proactive risk modelling



### Communications

- Campaigns
- Internal Communications
- Website and intranet



### Business Services

- Business support
- Switchboard
- Print management



### Project Co-ordination

- Planning
- Monitoring
- Governance



### Democratic Services

- Administer the democratic process
- Constitution advice
- Freedom of Information

## HR & Organisational Development



### Human Resources

- Employment law and policy
- HR advice and projects
- Recruitment and selection



### Payroll & Pensions

- Support on payroll and pension
- Policy and legal developments
- Administration



### Organisational Development

- Staff Engagement
- Succession planning and talent management
- Induction and Appraisals
- Apprenticeships



### Inclusion & Diversity

- Monitoring, reporting and ensuring compliance with statutory responsibilities
- Guidance and support on Inclusion and Diversity
- The promotion and training on inclusion and diversity areas



### Administration Support