

Appendix A

Profile of ESFRS Service Area



East Sussex Fire Authority

**INTEGRATED RISK MANAGEMENT
ACTION PLAN 2017–2020**

www.esfrs.org/irmp

Figure 1 Population Breakdown	3
Figure 2 Breakdown of Local Authorities	4
Figure 3 All incidents by year and type 2011/12 – 2015/16	7
Figure 4 All Incidents Apr 2015 - Mar 2016.....	8
Figure 5 Dwelling Fires Apr 2015 – Mar 2016.....	9
Figure 6 Road Traffic Collisions (RTCs) Apr 2015 – Mar 2016.....	10
Figure 7 Dwelling Fires & RTCs in The City Apr 2015 – Mar 2016.....	11
Figure 8 Dwelling Fires & RTCs in Hastings Apr 2015 – Mar 2016	12
Figure 9 Dwelling Fires & RTCs in Eastbourne Apr 2015 – Mar 2016.....	13
Figure 10 Dwelling Fires & RTCs in Rother Apr 2015 – Mar 2016	14
Figure 11 Dwelling Fires & RTCs in Wealden Apr 2015 – Mar 2016.....	15
Figure 12 Dwelling Fires & RTCs in Lewes Apr 2015 – Mar 2016.....	16
Figure 13 Life-Risk Water Rescues Apr 2011 – Mar 2016.....	17
Figure 14 Deaths in accidental dwelling fires, RTCs and water incidents attended by ESFRS in the last 5 years	18
Figure 15 ESFRS Calls Split by Hour of Day 2011/12 compared to 2015/2016	19
Figure 16 Breakdown of employee numbers across the Service.....	20
Figure 17 Fire Station Locations and Crewing Types	21
Figure 18 Pumping Appliances by Station	23

Overall Area

East Sussex Fire & Rescue Service serves a population of approximately 829,340 people. The area incorporates the County of East Sussex and the City of Brighton & Hove with populations of 544,064 and 285,276 respectively, as shown in Figure 1:

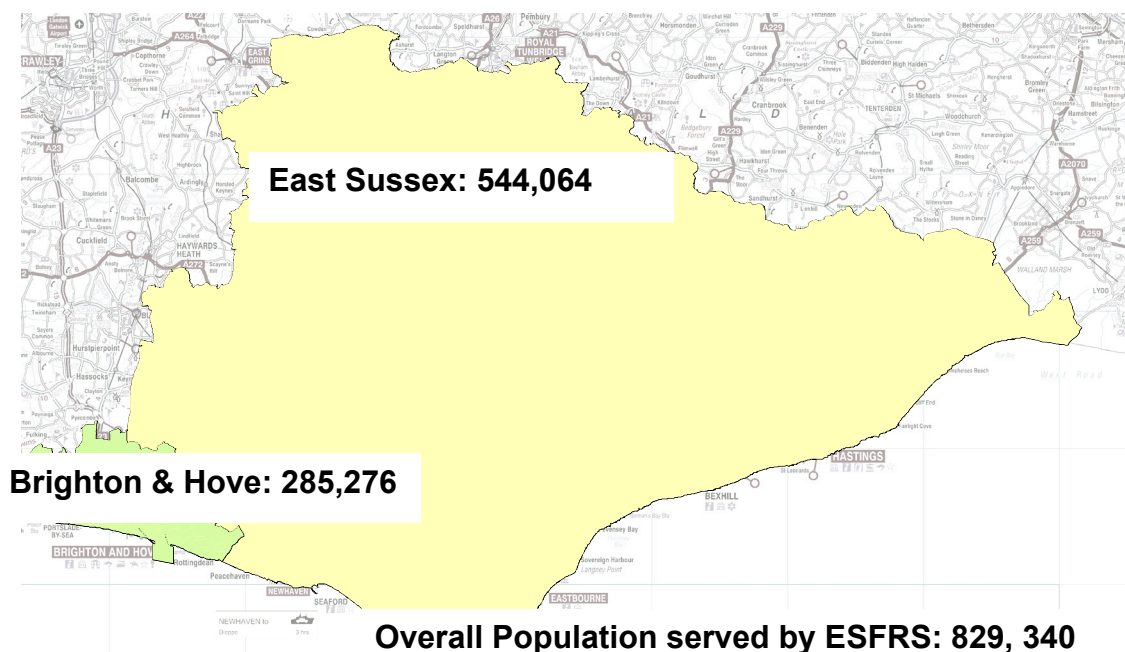


Figure 1 Population Breakdown

(ONS 2015 mid-year population estimates)

It can be seen from Figure 1 that over a third of the population that we serve live in the City of Brighton & Hove.

The County of East Sussex area can be further divided into the 5 local authority areas, as shown in Figure 2. These are Eastbourne, Lewes, Hastings, Rother and Wealden. Each has its own sense of place, culture, demographics and geographic characteristics.

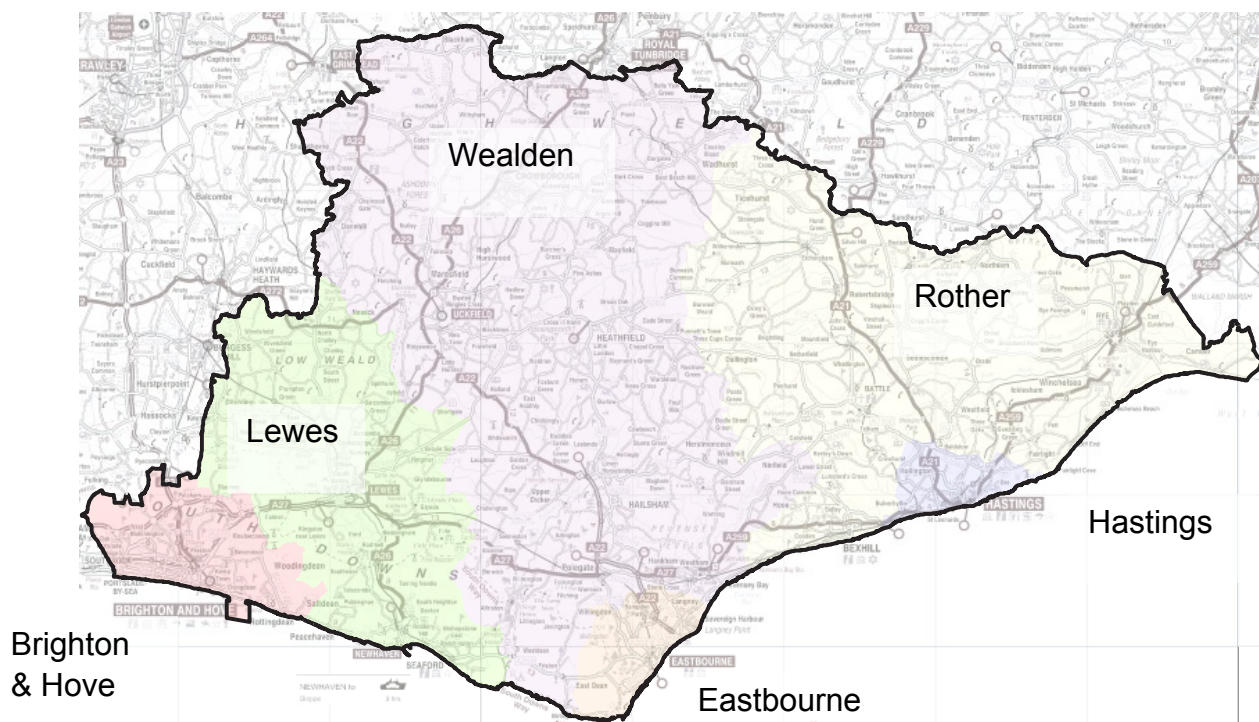


Figure 2 Breakdown of Local Authorities

Our Service Area

- Our area is one of the most wooded in England and 63% is designated as ‘an area of outstanding natural beauty’, with over 50 miles of coastline, some of which is designated ‘heritage coast’.
- Within the whole area there are no motorways and fewer than 50 miles of dual carriageway. Consequently, the road infrastructure is poor. Even the three geographically separate coastal urban areas have poor road connectivity, yet contain 70% of the total population of the Authority’s area. This increases road traffic collision risks and our Service response times.
- Our local economy is comprised of many small businesses, and workers are generally low paid and, with high property prices, personal disposable incomes are low.
- We have many picturesque villages and remote households that are some distance from community fire stations located in small towns.
- Our area provides almost every aspect of community risk including oil terminals and multiple small harbours.
- The geography and influence of the landscape poses significant coastal and inland flooding risk.

Facts about East Sussex

- The population of East Sussex is projected to increase to 569,530 by 2027, an increase of 29,760 from 2014. Households and dwellings are planned to increase by 10.5%, while the population is projected to increase by 5.5%, as household size decreases.
- Children and young people now account for a smaller proportion of the population (16%) than in 2001 (18%), while those of pensionable age (65+) still account for nearly 23%, far higher than regional and national comparisons.
- Black and minority ethnic (BME) groups account for 8% of the County's population, although East Sussex remains less ethnically diverse than nationally and regionally.
- The County has a higher proportion of married people (48%) and those who are registered in a same-sex civil partnership (0.3%), than regional and national comparisons.
- Lone parent households have increased slightly since 2001 to 6% of all households, while the proportion of lone parent households headed by males has also increased.
- Approximately 20% of the total population have a long-term health problem or disability that limits day to day activities, which is higher than the national and regional average.
- In East Sussex, 19 out of 329 Super Output Areas (SOAs) are amongst the most deprived 10% of SOAs in England. In Hastings, 30% of SOAs in the district are among the most deprived 10% nationally, making it one of the 13 most deprived local authorities in England by this measure. However the county also has 22 SOAs in the least deprived 10% of SOAs in England.

<http://www.eastsussexinfigures.org.uk>

Facts about the City of Brighton & Hove

- The City is ranked the 102nd most deprived authority in England out of 326 authorities. 12% of the City's areas are within the 10% most deprived in England.¹
- Brighton & Hove has some of the highest population density levels in the South East with 33 persons per hectare, 8 times higher than that for the South East.
- The City attracts over 8 million visitors a year.
- Older people account for 13% of the population although this is lower than the national average (16%).
- 20% of the population are from a BME background and all minority ethnic communities have grown significantly in number and proportion in the last decade. The largest increase in the number of people in an ethnic category is in the Other White category.
- An estimated 15% of residents are lesbian, gay or bisexual and the City has the highest number of people in same sex partnerships and/or marriages of any area in England.
- 16% of residents are disabled or have a long term health problem that limits their day-to-day activities to some degree.
- The City has two universities, hosting an estimated 34,000 students.
- Brighton & Hove hosts a number of conferences including those held annually by major political parties bringing many visitors, media and related security risks.

<https://www.bhconnected.org.uk/sites/bhconnected/files/City%20Snapshot%20Report%20of%20Statistics%202014%202.pdf>

¹ <https://www.gov.uk/government/statistics/english-indices-of-deprivation-2015>

Our Incidents

In recent years there has been a significant reduction in the number of incidents we attend. The downward trend in incidents demonstrates that the risks in the community are reducing as a result of our investment in prevention and protection activities. Even though there has been an increase in the population, the number of cars on the road and the number of dwellings and commercial premises, the number of incidents we attend has not increased to reflect this, indicating that the public are more safety conscious. It is our intention that our prevention work will continue and will have a positive effect on the further reduction of the number of incidents we attend. Figure 3 shows the number of calls we have attended over the last 5 years.

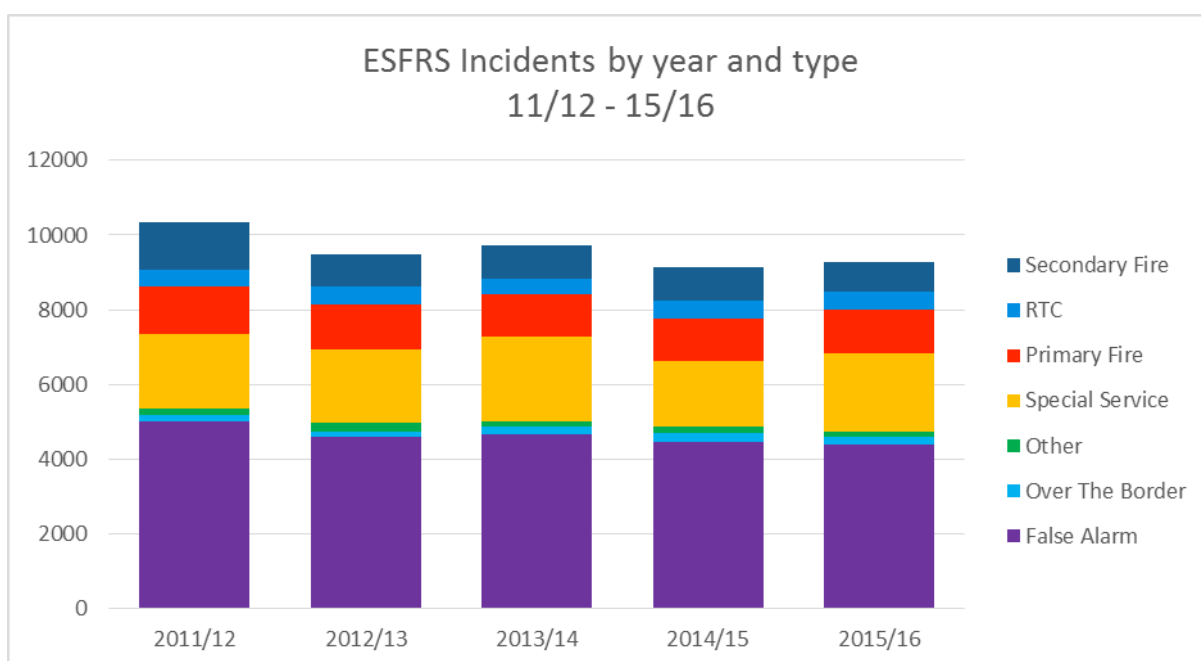


Figure 3 All incidents by year and type 2011/12 – 2015/16

The diagrams over the next few pages will show:

- the spread of incidents across our service area in the financial year 2015-2016, including false alarms which make up 47% of the total calls
- dwelling fires and road traffic collisions (RTCs) respectively for the same year including maps for each borough
- life risk water rescue incidents attended during the 5 year period 11/12 to 15/16
- the number of deaths occurring in accidental dwelling fires, RTCs and water rescues that we have attended over the last 5 years.
- The distribution of our demand across a 24 hour period – a comparison of 2011/12 & 2015/16

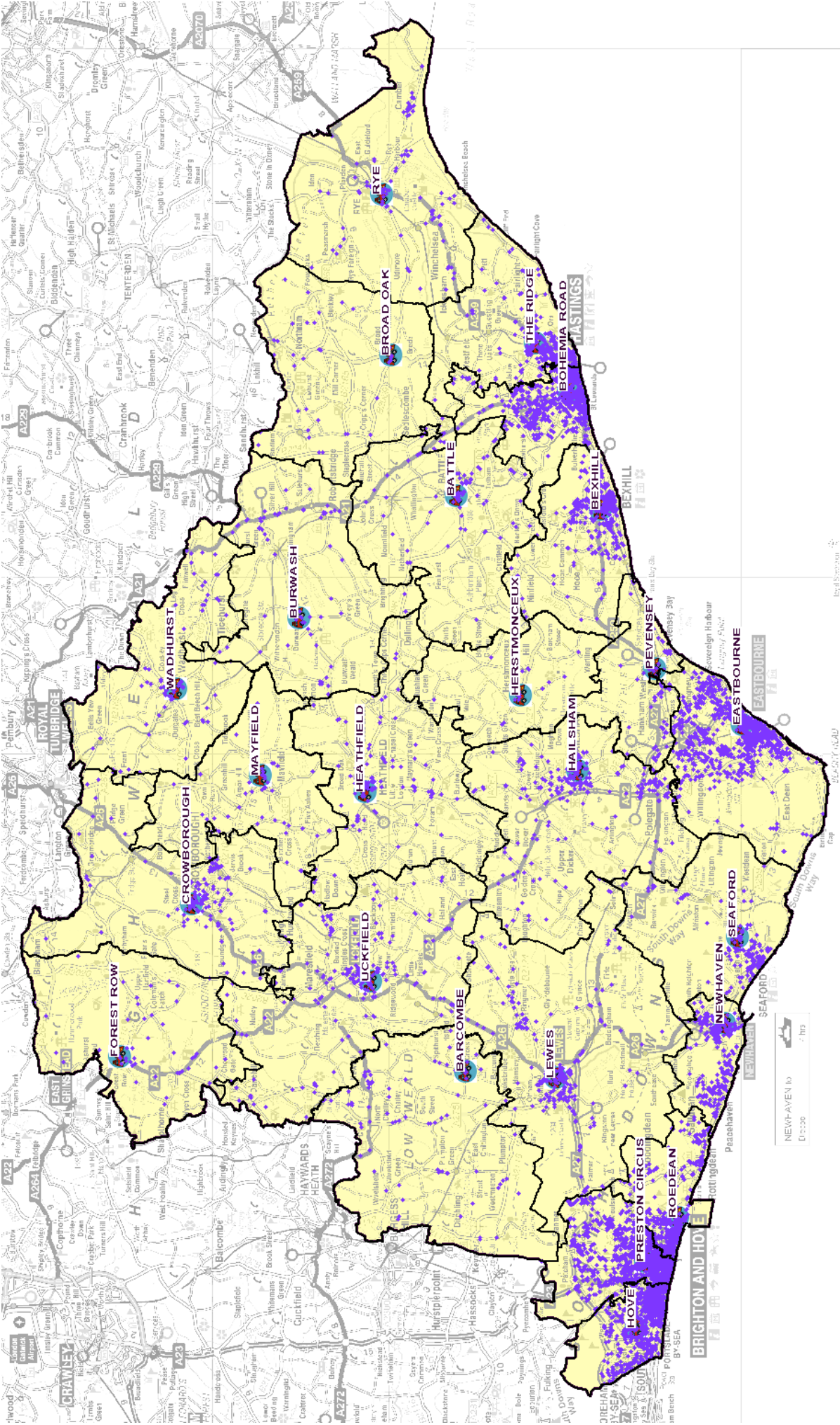


Figure 4 All Incidents Apr 2015 - Mar 2016

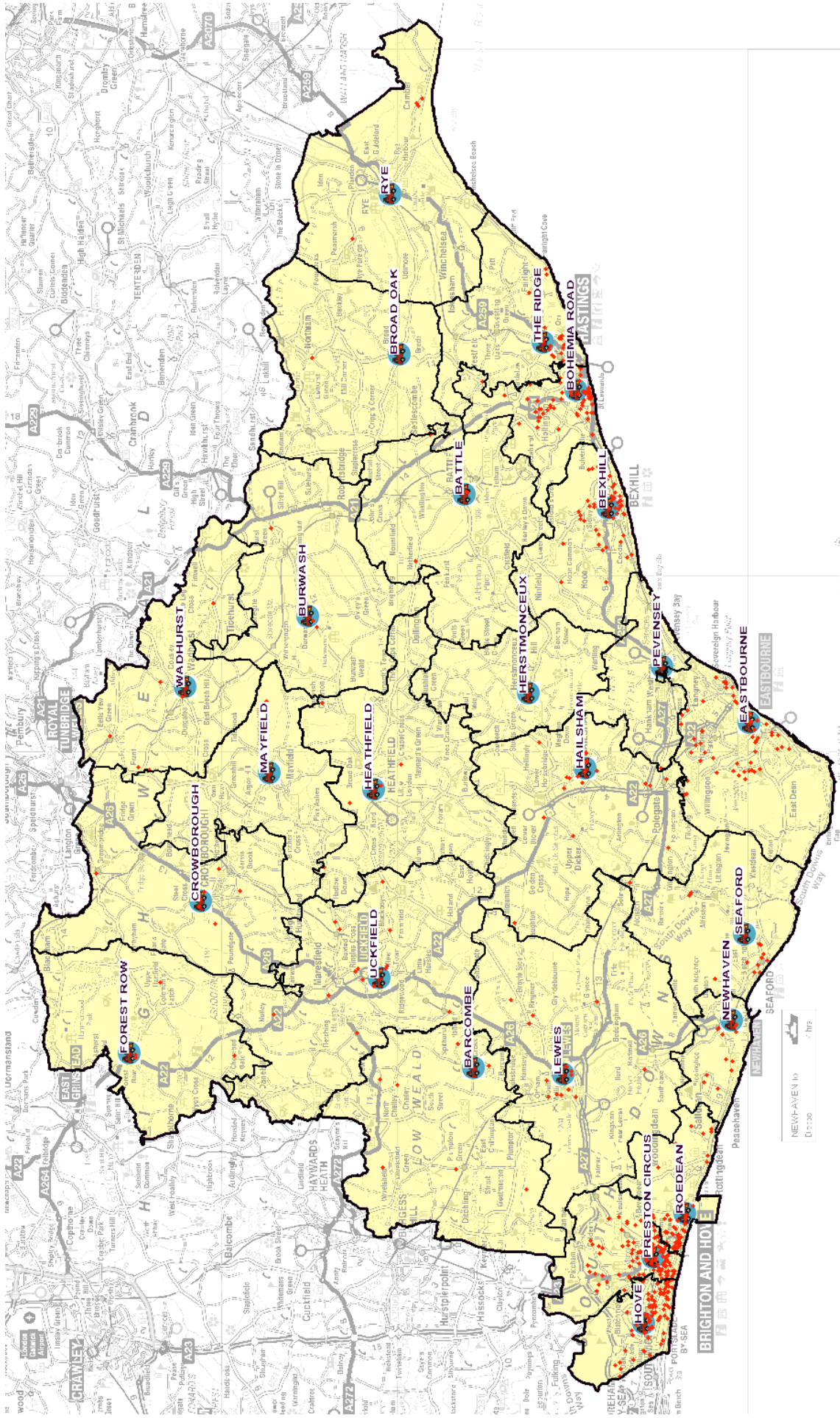


Figure 5 Dwelling Fires Apr 2015 – Mar 2016

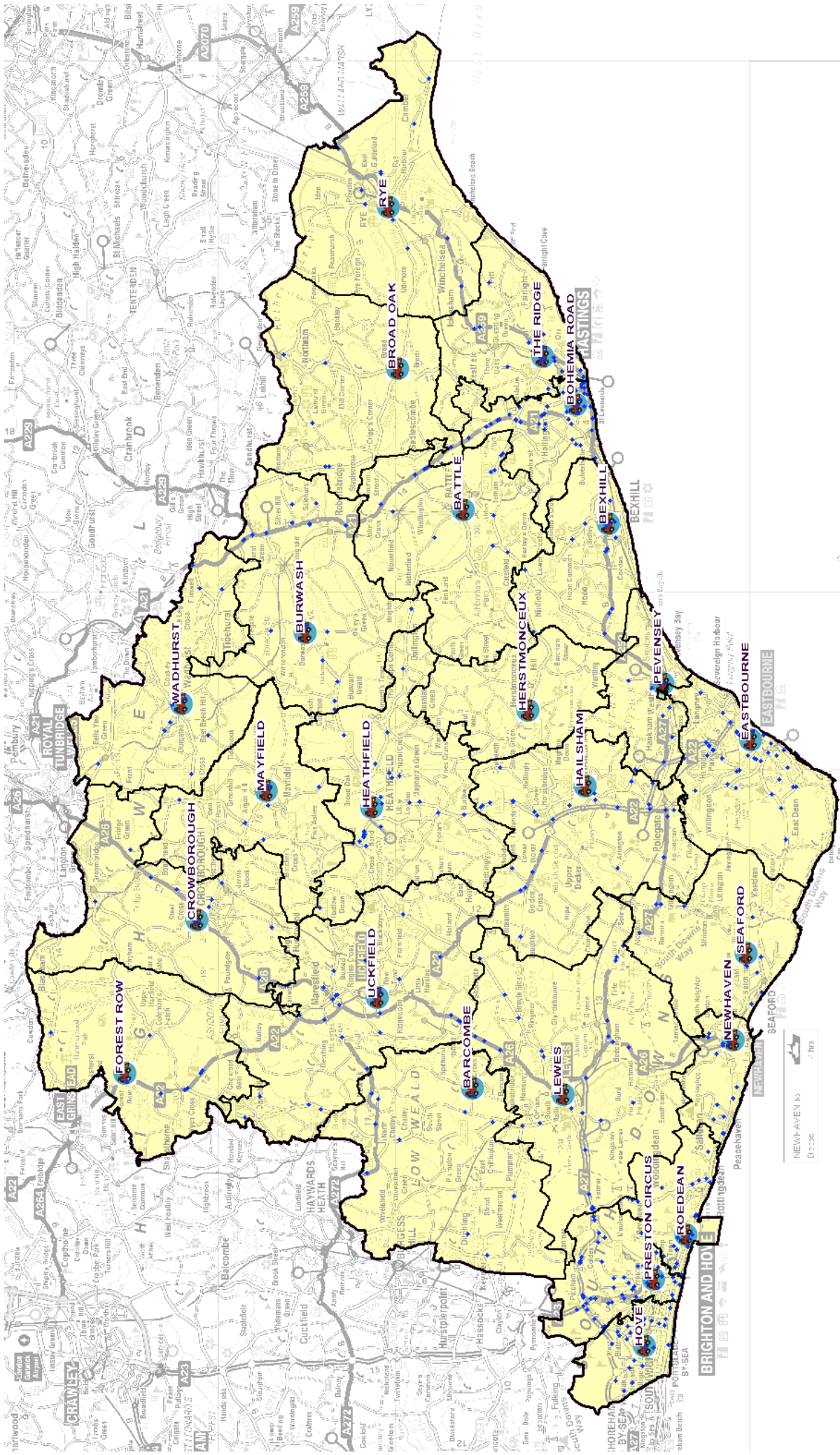


Figure 6 Road Traffic Collisions (RTCs) Apr 2015 – Mar 2016

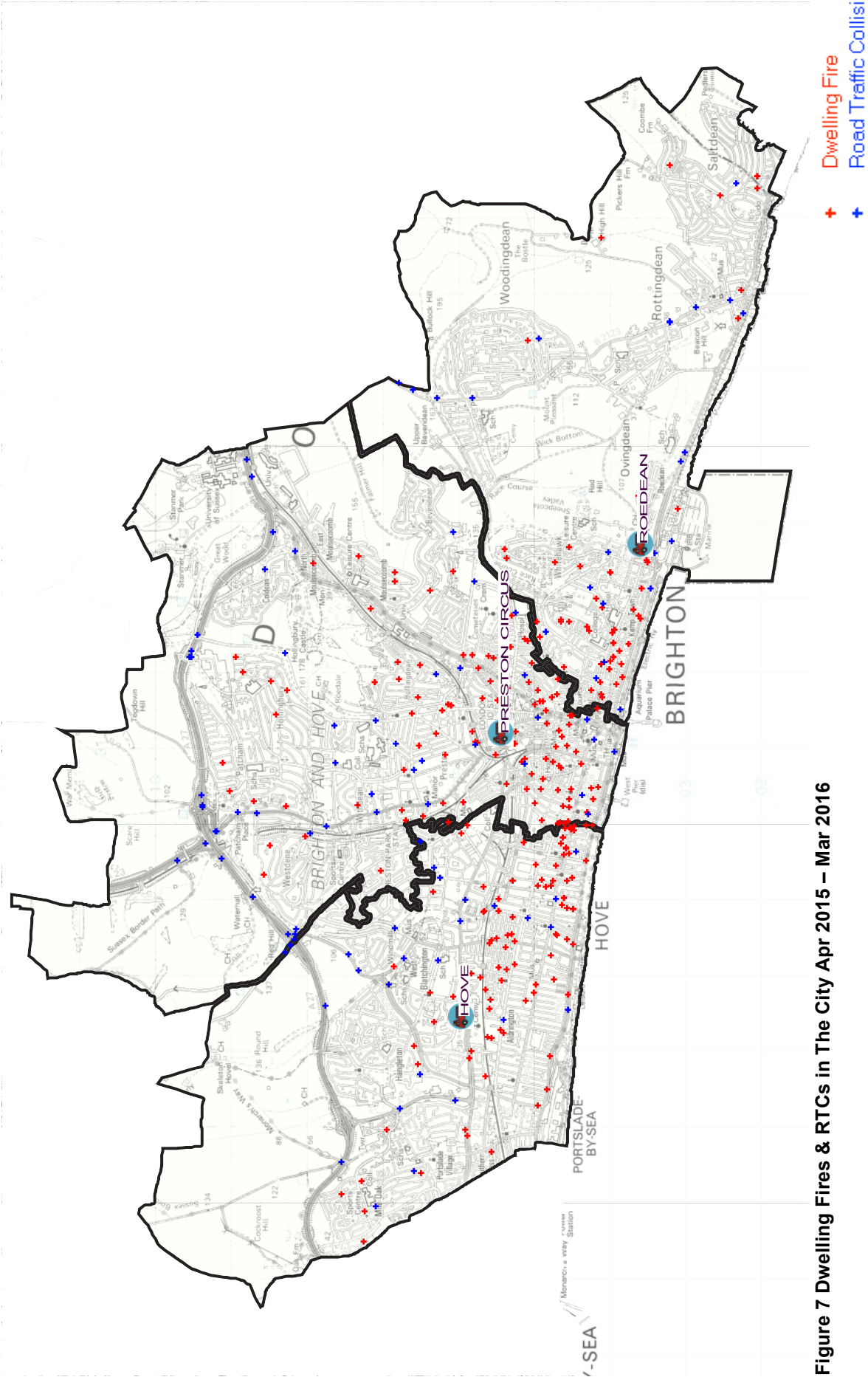


Figure 7 Dwelling Fires & RTCs in The City Apr 2015 – Mar 2016

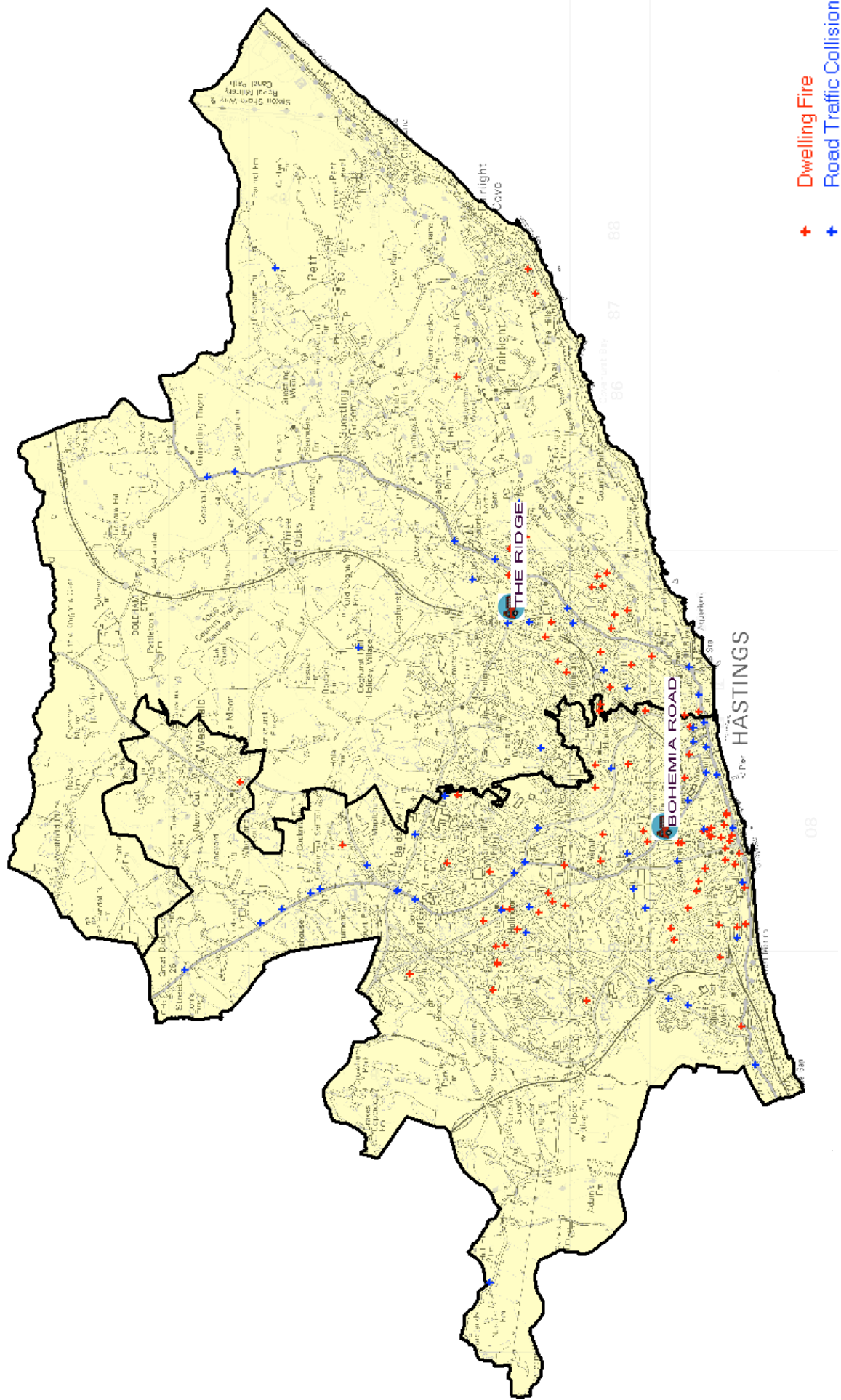


Figure 8 Dwelling Fires & RTCs in Hastings Apr 2015 – Mar 2016

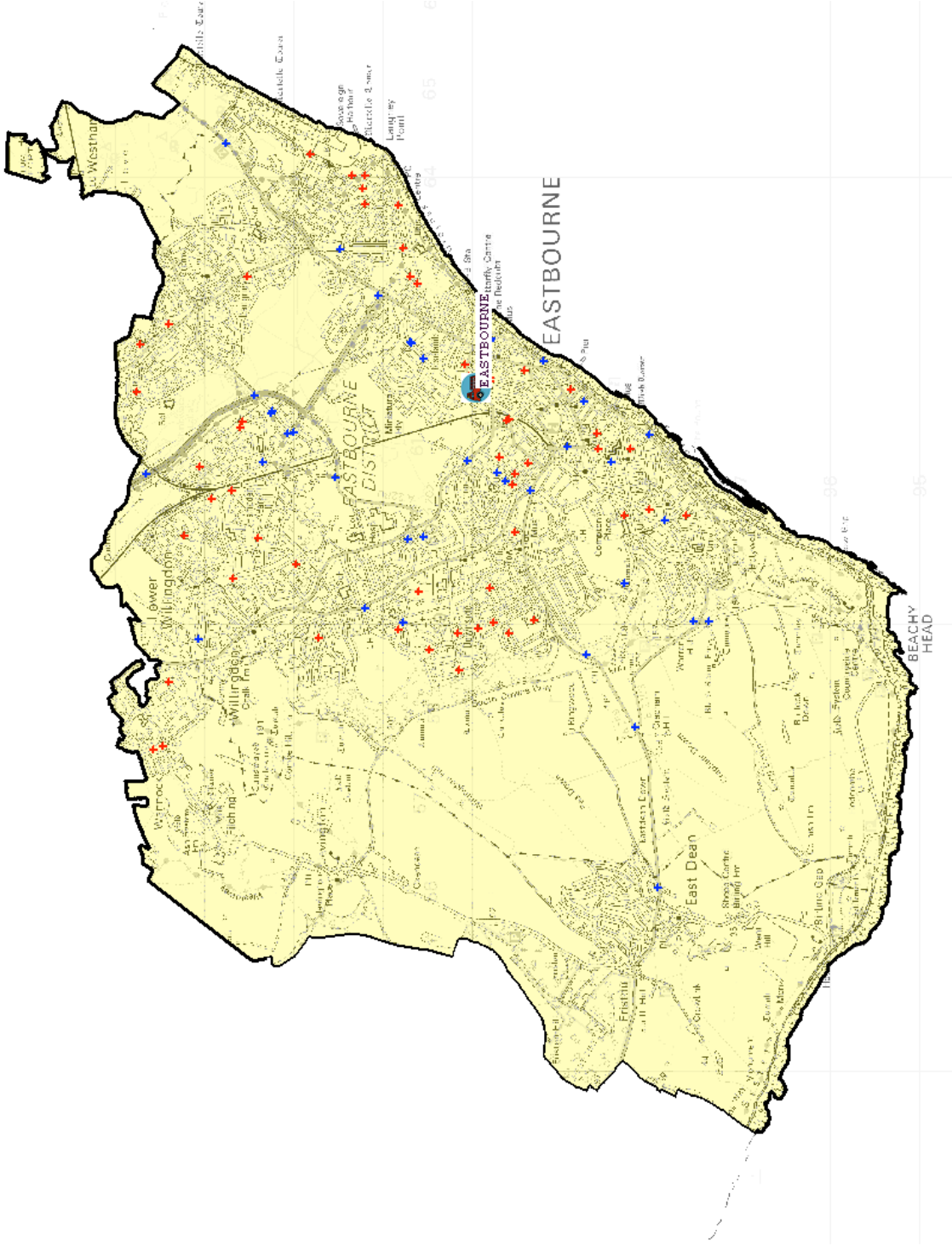


Figure 9 Dwelling Fires & RTCs in Eastbourne Apr 2015 – Mar 2016

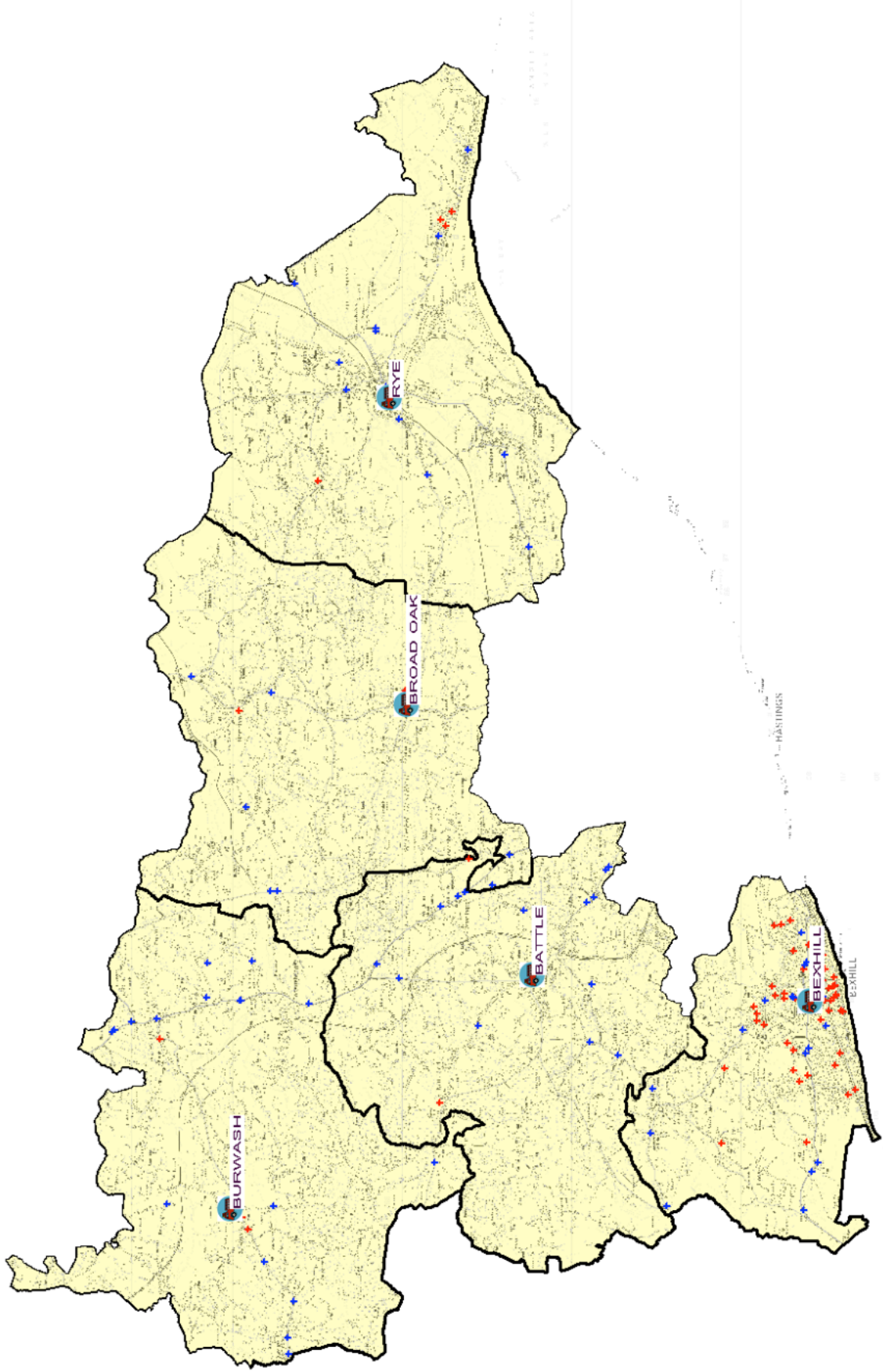


Figure 10 Dwelling Fires & RTCs in Rother Apr 2015 – Mar 2016

- + Dwelling Fire
- + Road Traffic Collision

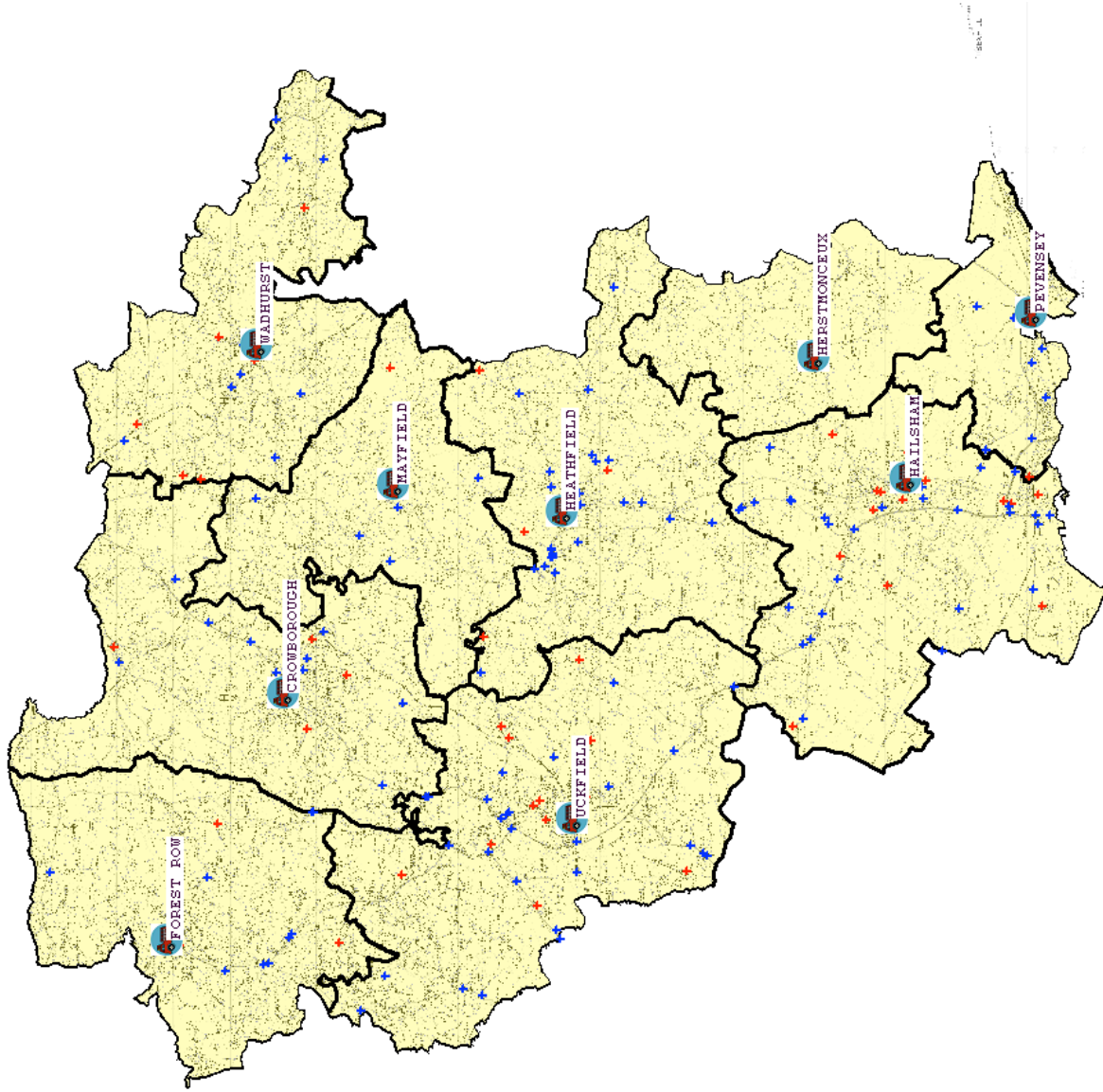
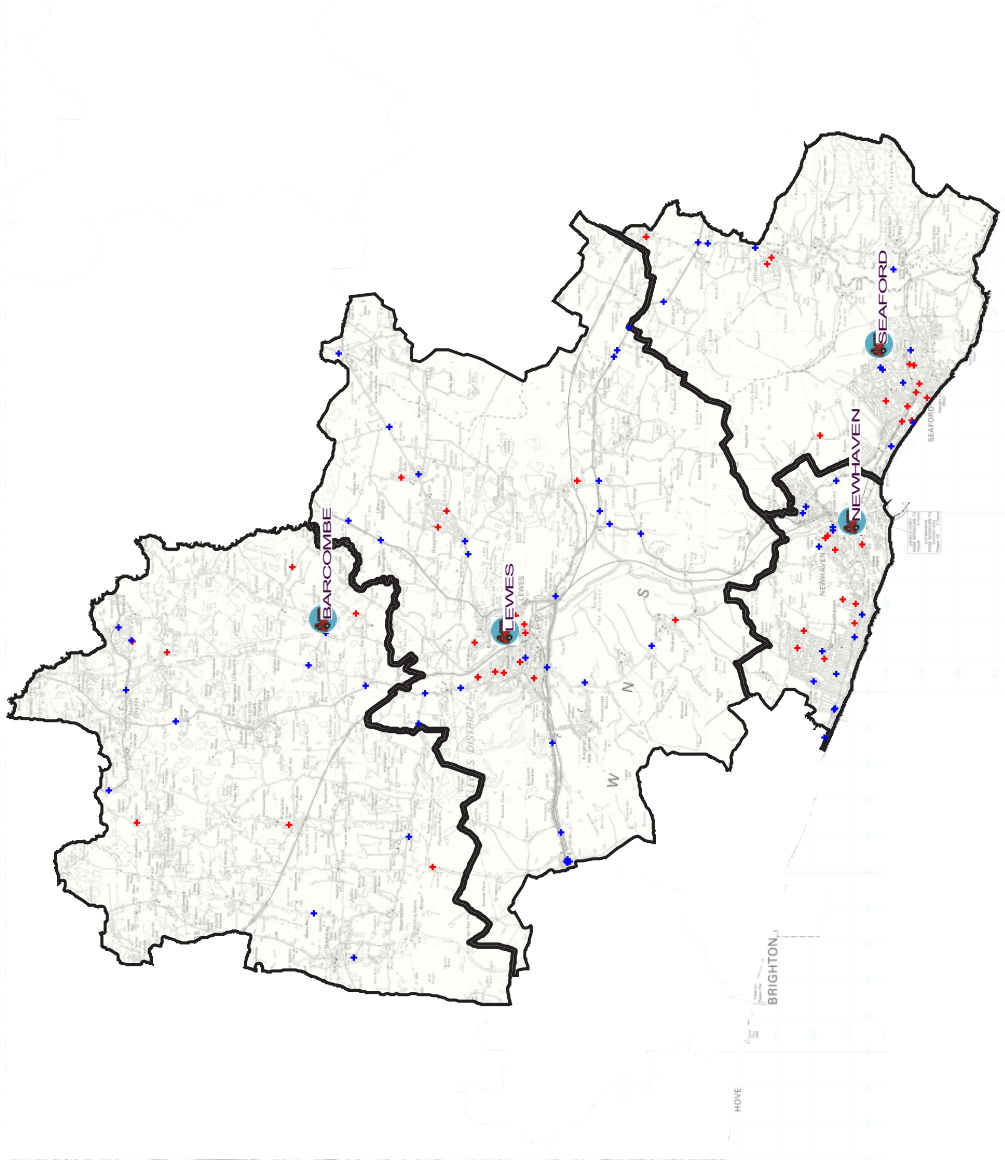


Figure 11 Dwelling Fires & RTCs in Wealden Apr 2015 – Mar 2016



+ Dwelling Fire
+ Road Traffic Collision

Figure 12 Dwelling Fires & RTCs in Lewes Apr 2015 – Mar 2016

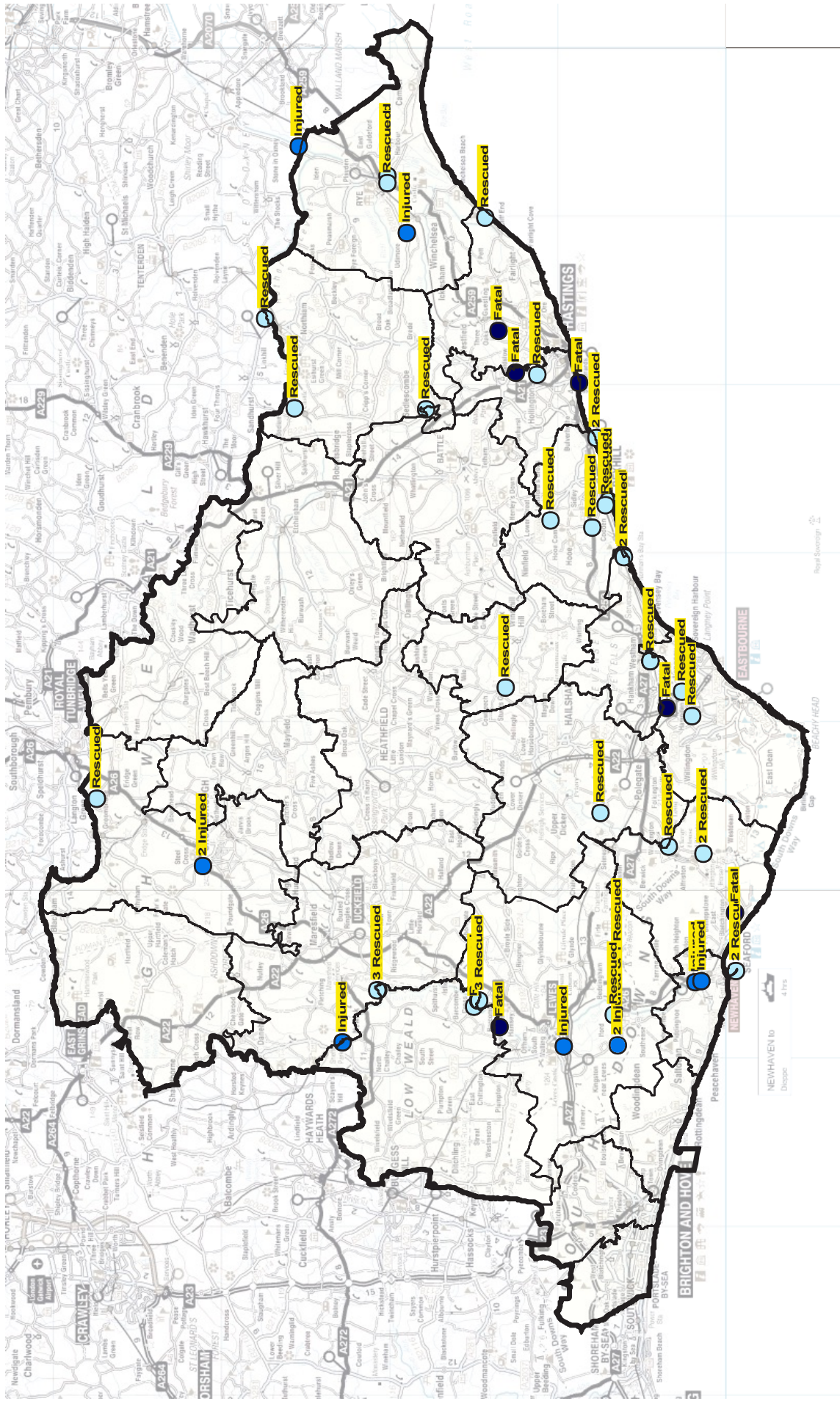


Figure 13 Life-Risk Water Rescues Apr 2011 – Mar 2016

Deaths in Accidental Dwelling Fires, Road Traffic Collisions and Water incidents attended by EFRS in the last 5 years

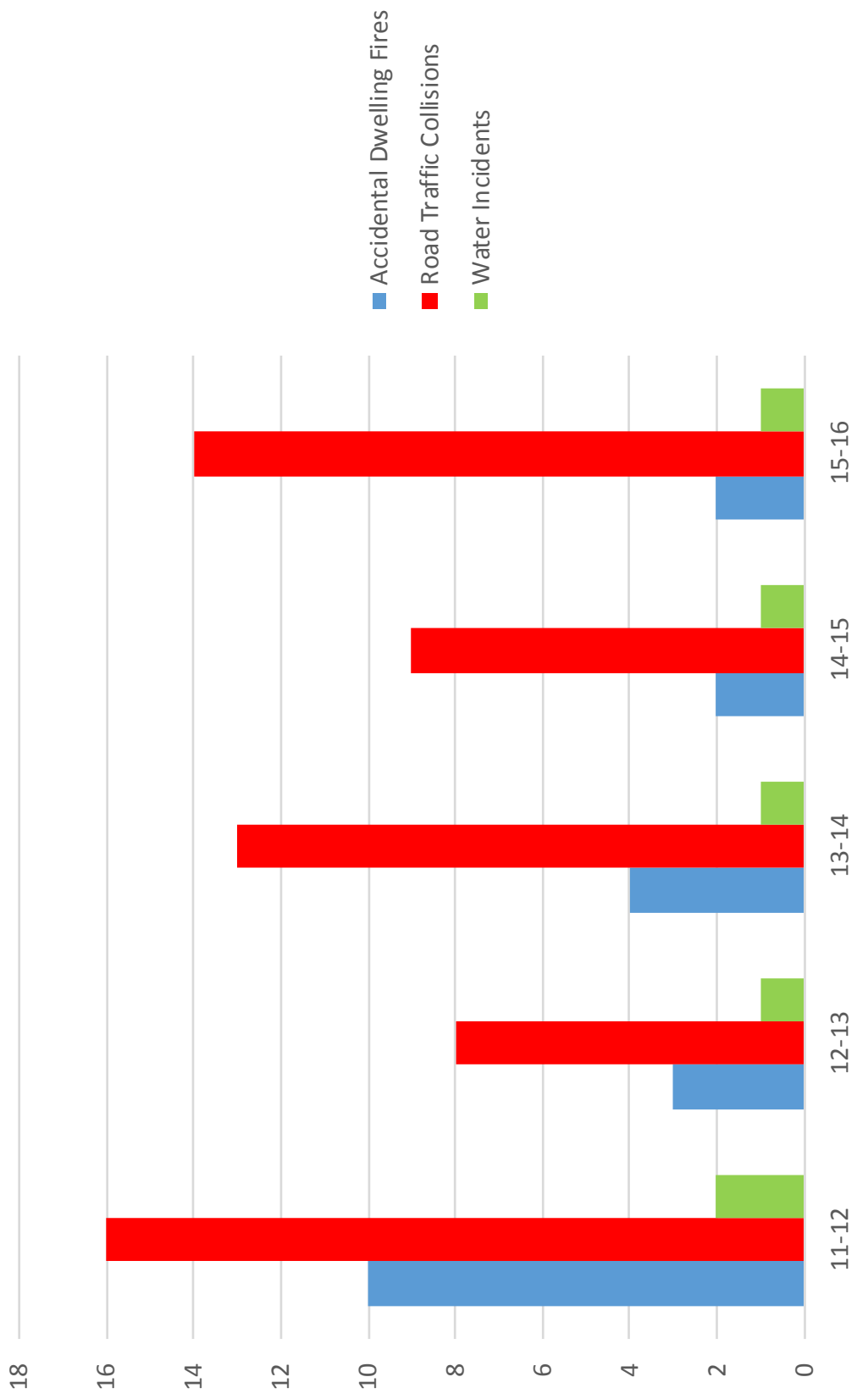


Figure 14 Deaths in accidental dwelling fires, RTCs and water incidents attended by EFRS in the last 5 years

No. of calls by hour of day
11/12 & 15/16

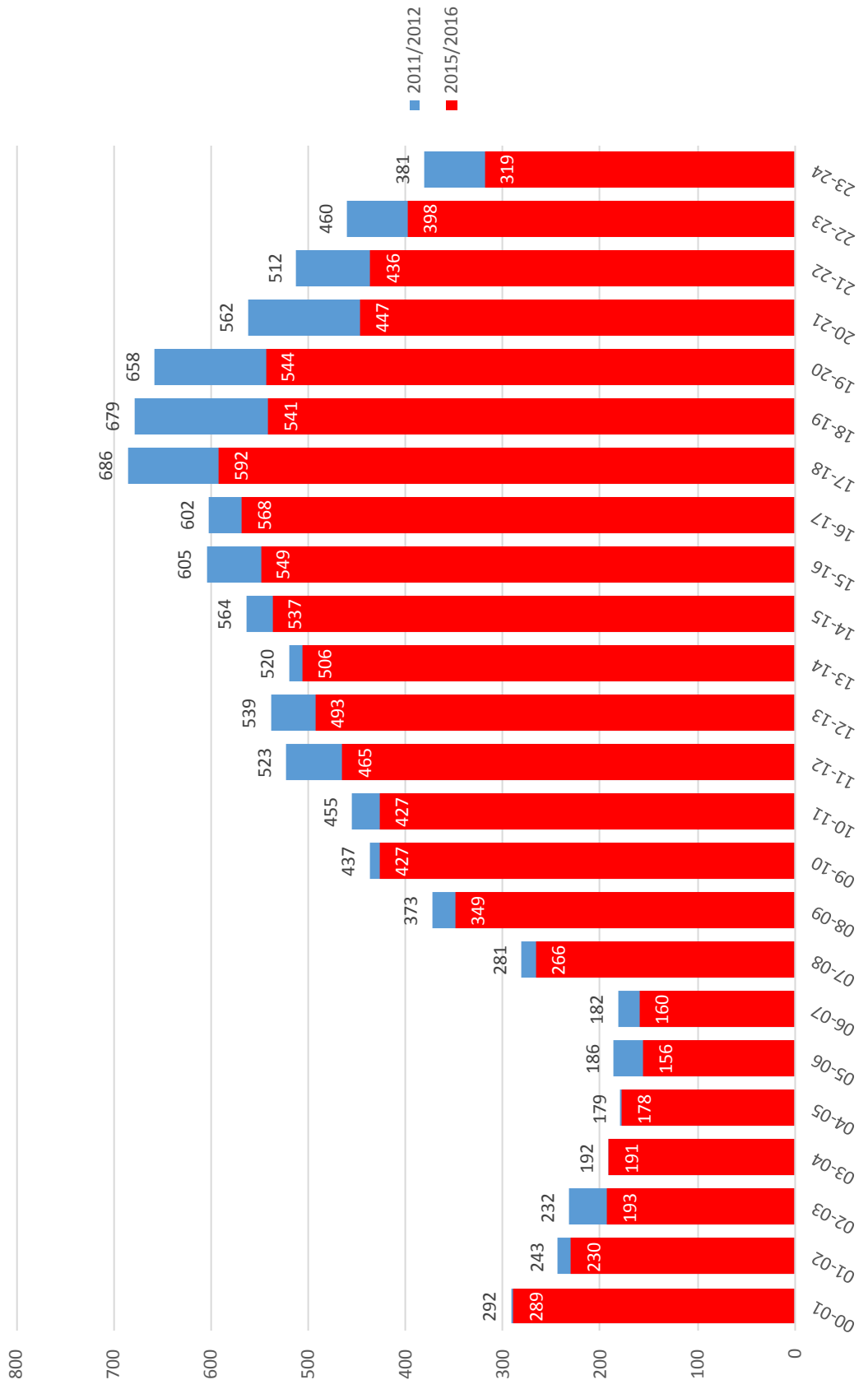


Figure 15 ESFRS Calls Split by Hour of Day 2011/12 compared to 2015/2016

OUR SERVICE

Employees

The Authority employs a total of 770 employees (full time equivalents):

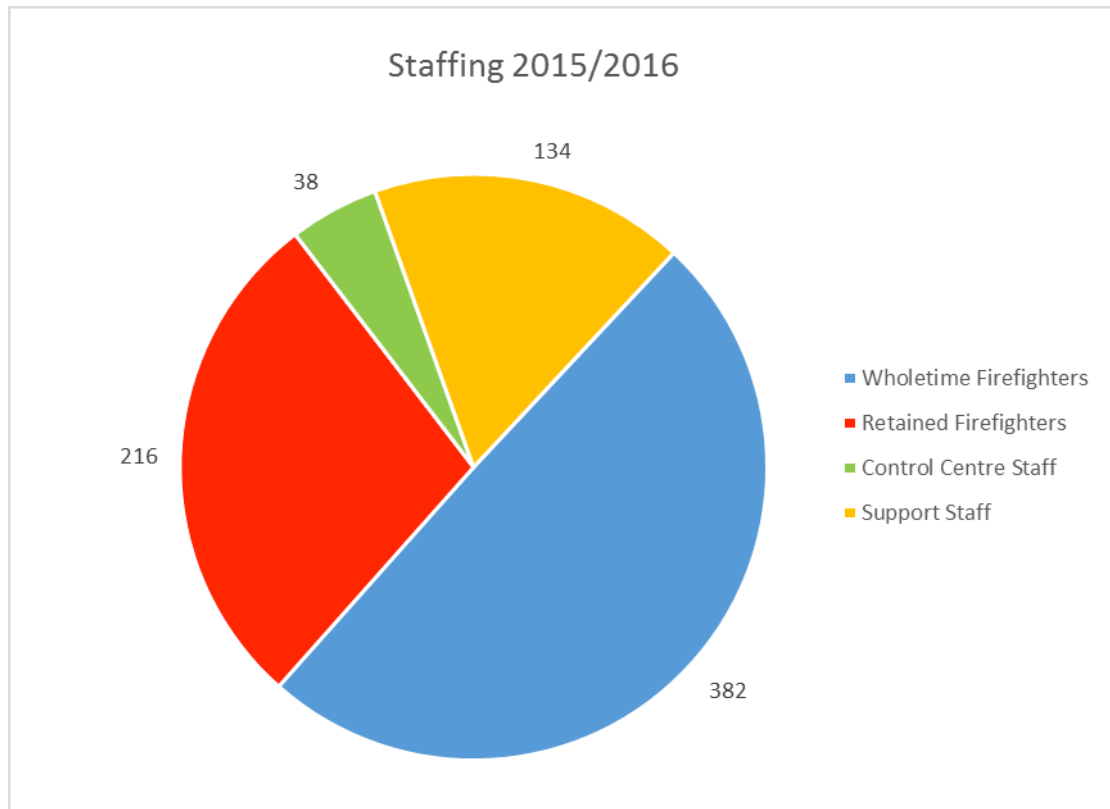


Figure 16 Breakdown of employee numbers across the Service

We also have a community volunteer scheme with 85 active volunteers providing support to prevention activities and campaigns to promote safety awareness.

Resources as they stand during 2015/16

We provide our operational response from:

- 6 wholetime shift stations - crewed 24 hours a day
- 6 day crewed stations – crewed from 0830-1830 on station and covered out of hours by firefighters on call
- 12 retained stations – crewed 24 hours a day by firefighters on call

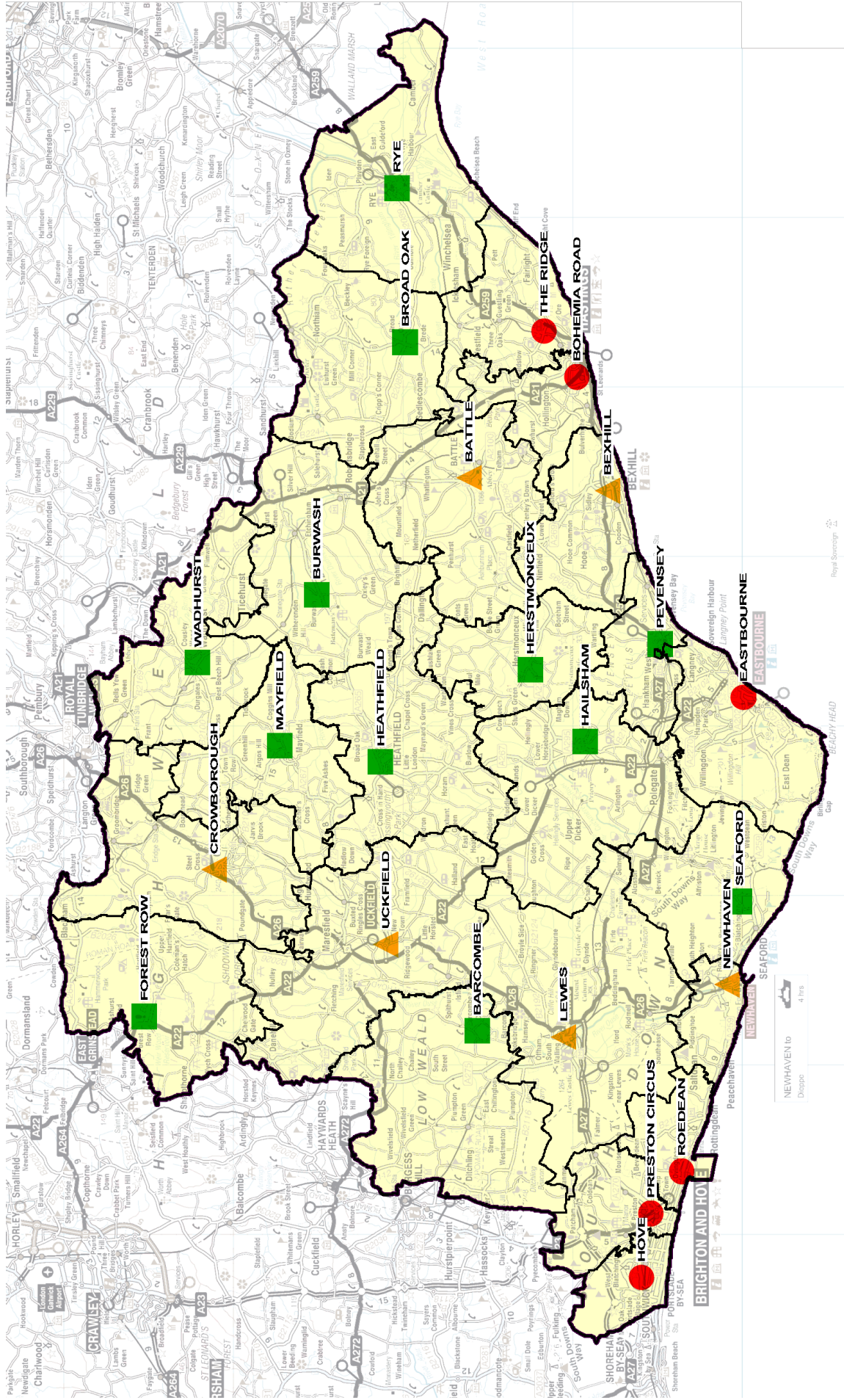


Figure 17 Fire Station Locations and Crewing Types

Types of Appliances

There are 4 main types of firefighting appliances used by ESFRS as follows:

- An Extended Rescue Pump (known as an Echo pump) – a multi-purpose appliance carrying a large amount of equipment including a variety of ladders, 1800 litres of water and a pump capable of supplying 2250 litres per minute, dedicated hydraulic rescue tools, water safety and rescue equipment and oxygen. (A number of strategically located Echo pumps also carry compressed air foam. This is a highly effective extinguishing media and is a recent innovation introduced into ESFRS)
- A Water Tender (known as a Whiskey pump) – a multi-purpose appliance that carries both firefighting and rescue equipment with the same water and pumping capacity as the Echo appliance.
- A Maxicab - an extended rescue pump able to carry a crew of 8 firefighters, equipped with rescue and firefighting equipment with the same water and pumping capacity as the Echo appliance.
- An Aerial Rescue Platform – (known as an ARP) – a multi-purpose pump that combines the firefighting capabilities of an Echo pump with a high-reach aerial ladder platform.

These are supported by a variety of special appliances e.g. animal rescue unit, technical rescue unit, rope rescue, aerial appliances etc.

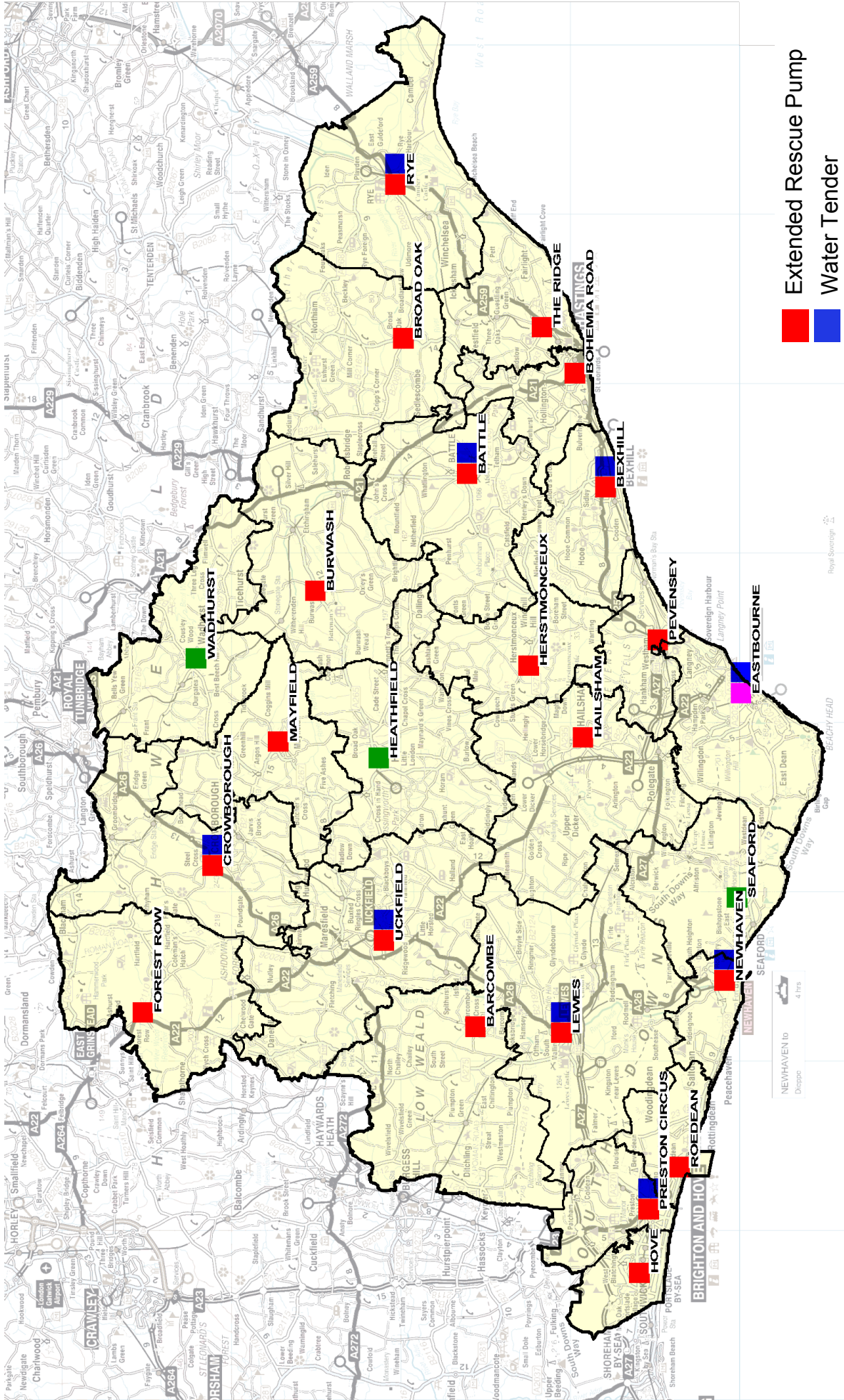


Figure 18 Pumping Appliances by Station