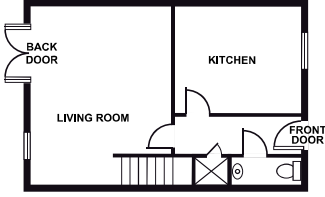


Plan the safest route out



Draw a plan of your home and add your exit routes

A large, empty grid for drawing a floor plan and exit routes. The grid is 20 units wide and 30 units high.



HOME FIRE EXIT PLAN

1. Apply Exit Plan
2. Shout "FIRE!"
3. Go to bedroom door.
4. Feel door with the back of your hand.
5. If door is cold, open carefully.
6. Meet with others in the home.
7. Go towards exit. Exit clear.
8. Unlock door if locked.
9. Exit to a safer place.
10. Call Fire & Rescue Service - 999.

